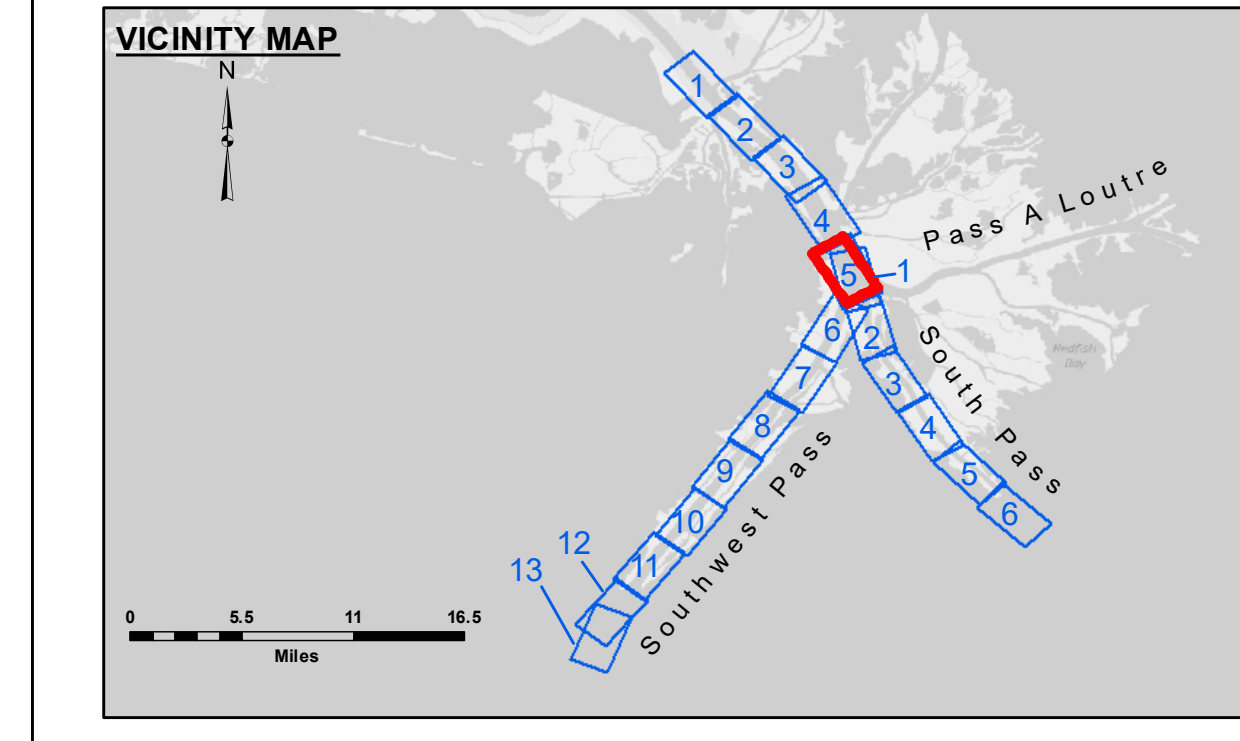


DREDGE DODGE ISLAND
DREDGING FULL CHANNEL WIDTH
STA. 3070+00 TO STA. 110+00

PILOT TOWN ANCHORAGE
An area approximately 5/2 miles in length along the right descending bank or west side of the river. The east limit of the anchorage area at the upper end and west limit at the lower end are approximately 1,600 feet from the east bank at Mile 6.7 above Head of Passes and 1,600 feet from the west bank at a point directly opposite the Old Central Station Light at Mile 3.7 above Head of Passes, thence to a point 1,600 feet directly opposite Pilot Town Light at Mile 2.9 above Head of Passes, thence to a point 1,600 feet directly opposite Pilot Town Light at Mile 1.5 above Head of Passes, which is the downstream limit of the anchorage area.



LEGEND	
--- Federal Navigation Channel	● Cable Area
— Federal Navigation Center Line	□ Placement Area
— As-built Pipeline/Cable	□ Anchorage Area
..... Unconfirmed Pipeline/Cable	⊗ Obstruction Point
— Project Depth Contour	⚓ Wrecks-Submerged
□ Borrow Area	★ Beacon, General
● Shoalest Sounding**	◆ Red Navigation Buoy
★ Beacon, General	◆ Green Navigation Buoy
◆ Red Navigation Buoy	
◆ Green Navigation Buoy	

Gage Reading: 1.6 MLLW @ PILOT TOWN @ 1000
 Sea Conditions: CALM
 Vessel Name: BLANCHARD
 Survey Type: CONDITION, SB
 Sounding Frequency***: LOW

NOTES:
 Horizontal Coordinate System: North American Datum of 1983 (NAD83), projected to the State Plane Coordinate System (SPCS), Louisiana South Zone. Distance units in U.S. Survey Feet.
 Vertical Datum: 01525 (0.0) GAGE = -0.15 NAVD83 2009.55 = -0.47 MLLW (12-16).
 Soundings are shown in feet and indicate depths below Mean Lower Low Water (MLLW, 12-16). Datum Relationships for gage 01525 as of March 2020: 0.0' NAVD83, 2009.55 = -0.53' MLLW = 2.97' MLG
 Distances on the Mississippi River, above and below Head of Passes are shown at 1 mile intervals.
 The location of navigation aids are based on and provided by the U.S. Coast Guard.
 2022 Aerial Photography data source: Optimal GEO (1998 DOQQ in green)
 Reference is N.O.A. Navigation Chart No. 11361.
 ** Shoalest Sounding per Quarter per Reach.
 *** High frequency (200 kHz) survey data represents the first signal return at a sounding location and will include suspended solids, known as "fluff", if present. Low frequency (24 kHz) survey data normally penetrates through this "fluff" layer to depict elevations of consolidated bottom material. Low frequency accuracies may vary depending on channel conditions and fathometer settings.



DISTRIBUTION STATEMENT:
 This document is the property of the U.S. Army Corps of Engineers. It is loaned to your organization for your use only. It is not to be distributed outside your organization. It is not to be used for any purpose other than that for which it was prepared. It is not to be used for any purpose other than that for which it was prepared. It is not to be used for any purpose other than that for which it was prepared.

Submitted:	Checked:	Approved:
Submitted By: JTB & DBD	Checked By: RSL	Approved By: MSK

**MISSISSIPPI RIVER - B.R. TO GULF
 SOUTHWEST PASS - SHEET 5
 SW_05_SWP_20230410_CS
 10 April 2023**

**Sheet Reference Number
 5 of 13**

Revision Number:
 4.2-202 (04/20)