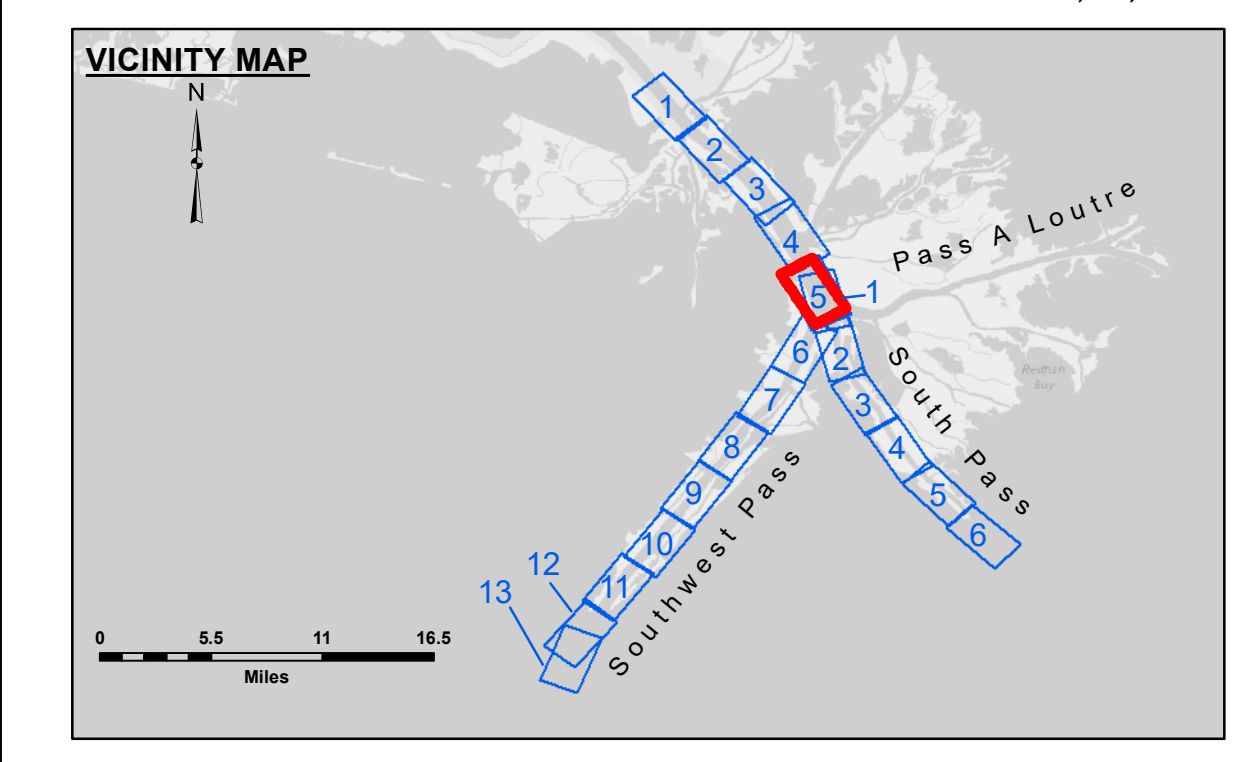


**DREDGE DODGE ISLAND
DREDGING STATION 3070+00 TO STATION 110+00
FULL CHANNEL WIDTH**



LEGEND

--- Federal Navigation Channel	○ Cable Area	□ Borrow Area	■ -10' and above
— Federal Navigation Center Line	□ Placement Area	● Shoalest Sounding**	■ -10' to -20'
— As-built Pipeline/Cable	□ Anchorage Area	★ Beacon, General	■ -20' to -30'
..... Unconfirmed Pipeline/Cable	⊗ Obstruction Point	◆ Red Navigation Buoy	■ -30' to -40'
— Project Depth Contour	⚓ Wrecks-Submerged	◆ Green Navigation Buoy	■ -40' to -45'
			■ -45' to -50'
			■ -50' to -55'
			■ -55' and below

NOTES:

Horizontal Coordinate System: North American Datum of 1983 (NAD83), projected to the State Plane Coordinate System (SPCS), Louisiana South Zone. Distance units in U.S. Survey Feet.

Vertical Datum: Soundings are shown in feet and indicate depths below Mean Lower Low Water (MLLW, 12-16). Datum Relationships for gage 01525 as of March 2020: 0.0' NAVD88, 2009.55 = -0.53' MLLW = 2.97' MLG

Distances on the Mississippi River, above and below Head of Passes are shown at 1 mile intervals.

The location of navigation aids are base on and provided by the U.S. Coast Guard.

2022 Aerial Photography data source: Optimal GEO (1998 DOQQ in green)

Reference is N.O.A. Navigation Chart No. 11361.

** Shoalest Sounding per Quarter per Reach.

*** High frequency (200 kHz) survey data represents the first signal return at a sounding location and will include suspended solids, known as "fluff", if present. Low frequency (24 kHz) survey data normally penetrates through this "fluff" layer to depict elevations of consolidated bottom material. Low frequency accuracies may vary depending on channel conditions and fathometer settings.

Gage Reading: 1.0 MLLW @ PILOT TOWN @ 1055

Sea Conditions: CALM

Vessel Name: BLANCHARD

Survey Type: CONDITION, SB

Sounding Frequency***: LOW



DISCLAIMER

The United States Government furnishes these data and the recipient accepts and uses them with the express understanding that the data are not warranted for any purpose other than that for which they were prepared, and that the user is responsible for the accuracy, completeness, reliability, usability or suitability for any particular purpose of the data. The user shall not be held liable for any damage or loss, under no liability whatsoever to any person by reason of any use of the data. The user shall not be held liable for any damage or loss, under no liability whatsoever to any person by reason of any use of the data. The user shall not be held liable for any damage or loss, under no liability whatsoever to any person by reason of any use of the data.

U.S. ARMY CORPS OF ENGINEERS
NEW ORLEANS DISTRICT

Submitted:	Surveyed By: JTB & DED
Recommended: Chief, Survey Section	Plotted By: LLB
Approved: Chief, Waterways Maintenance Section	Checked By: MSK

**MISSISSIPPI RIVER - B.R. TO GULF
SOUTHWEST PASS - SHEET 5
SW_05_SWP_20230511_CS_PRO
11 May 2023**

**Sheet Reference Number
5 of 13**

Revision Number:
4.2-302049.20