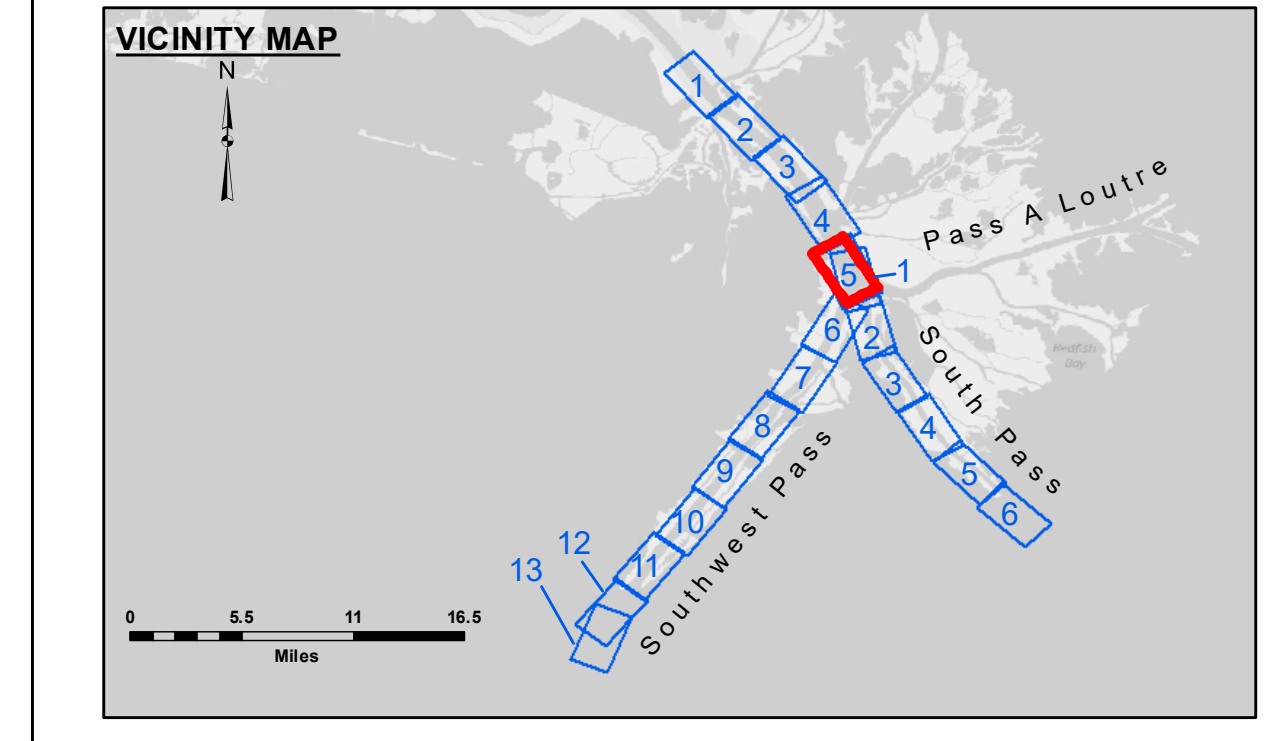


DISCLAIMER
The United States Government furnishes these data and the recipient accepts and uses them with the express understanding that the United States Government makes no warranty, express or implied, concerning the accuracy, completeness, reliability, usability or suitability for any particular purpose of the data. The recipient agrees to indemnify the United States Government from and hold it harmless from any liability, in whole or in part, for any use of the data for purposes not intended by the United States Government. The recipient may not transfer these data to others without also transmitting this disclaimer. The information depicted on the map represents the results of a hydrographic survey which was developed after the date of the information shown on the map and is not intended to be considered as a representation of the general condition existing at that time.

Submitted:	JH & RCC
Recommended:	RSL
Approved:	MSK

MISSISSIPPI RIVER - B. R. TO GULF
SOUTHWEST PASS - SHEET 5
SW_05_SWP_20240129_CS
29 January 2024

Sheet Reference Number
5 of 13



LEGEND

- Federal Navigation Channel
- Federal Navigation Center Line
- As-built Pipeline/Cable
- Unconfirmed Pipeline/Cable
- Project Depth Contour
- Cable Area
- Placement Area
- Anchorage Area
- ⊗ Obstruction Point
- ✙ Wrecks-Submerged
- Borrow Area
- Shoalest Sounding**
- ☆ Beacon, General
- ◆ Red Navigation Buoy
- ◇ Green Navigation Buoy
- 10' and above
- 10' to -20'
- 20' to -30'
- 30' to -40'
- 40' to -45'
- 45' to -50'
- 50' to -55'
- 55' and below

Gage Reading: -0.5 MLLW @ PILOT TOWN @ 1230

Sea Conditions: CALM, FLUFF

Vessel Name: TOBIN

Survey Type: CONDITION, SB

Sounding Frequency*:** LOW

Vertical Datum: North American Datum of 1983 (NAD83), projected to the State Plane Coordinate System (SPCS), Louisiana South Zone. Distance units in U.S. Survey Feet.

Datum Relationships for gage 01525 as of March 2020:
0.0' NAVD83, 2009.55 = -0.53' MLLW = 2.97' MLG

Vertical Datum: Soundings are shown in feet and indicate depths below Mean Lower Low Water (MLLW, 12-16).
Datum Relationships for gage 01525 as of March 2020:
0.0' NAVD83, 2009.55 = -0.53' MLLW = 2.97' MLG

Distances on the Mississippi River, above and below Head of Passes are shown at 1 mile intervals.

The location of navigation aids are base on and provided by the U.S. Coast Guard.

2022 Aerial Photography data source: Optimal GEO (1998 DOQQ in green)

Reference is N.O.A. Navigation Chart No. 11361.

** Shoalest Sounding per Quarter per Reach.

*** High frequency (200 kHz) survey data represents the first signal return at a sounding location and will include suspended solids, known as "fluff", if present. Low frequency (24 kHz) survey data normally penetrates through this "fluff" layer to depict elevations of consolidated bottom material. Low frequency accuracies may vary depending on channel conditions and fathometer settings.