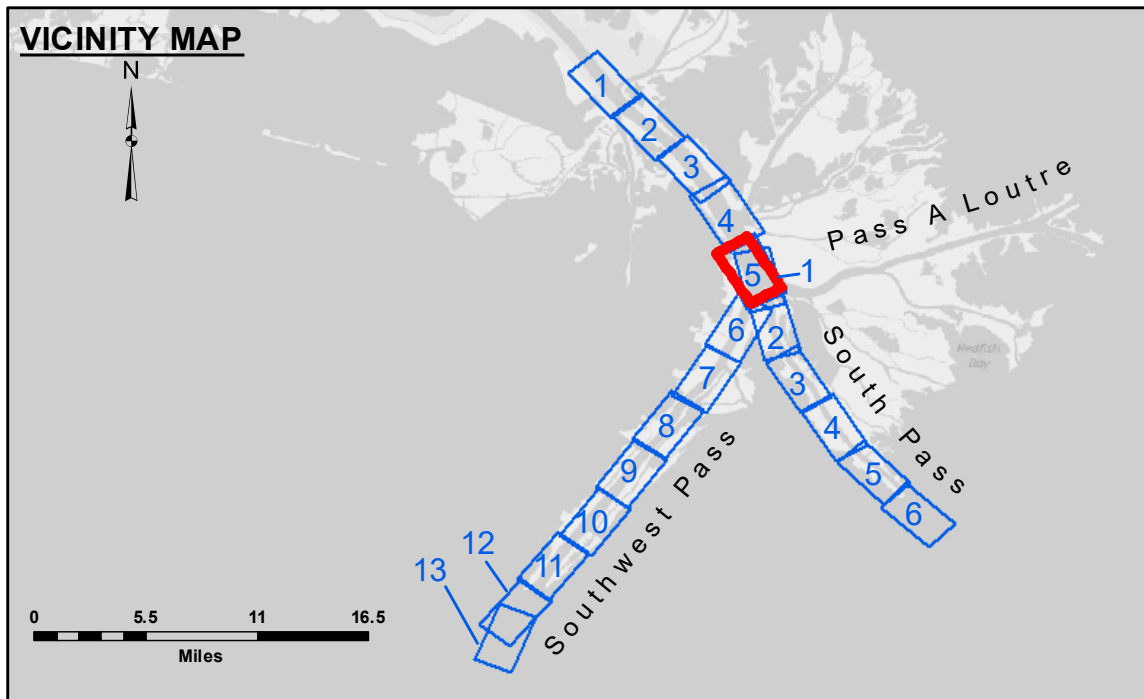


DREDGE GLENN EDWARDS  
DREDGING STATION 3070+00 TO STATION 120+00  
FULL CHANNEL WIDTH SHEETS 5 & 6



**LEGEND**

--- Federal Navigation Channel	● Cable Area	□ Borrow Area	■ -10' and above
— Federal Navigation Center Line	□ Placement Area	● Shoalest Sounding**	■ -10' to -20'
— As-built Pipeline/Cable	□ Anchorage Area	★ Beacon, General	■ -20' to -30'
..... Unconfirmed Pipeline/Cable	⊗ Obstruction Point	◆ Red Navigation Buoy	■ -30' to -40'
— Project Depth Contour	⚓ Wrecks-Submerged	◆ Green Navigation Buoy	■ -40' to -45'
			■ -45' to -50'
			■ -50' to -55'
			■ -55' and below

Gage Reading: 0.7 MLLW @ PILOT TOWN @ 1245  
 Sea Conditions: CALM  
 Vessel Name: BLANCHARD  
 Survey Type: CONDITION, SB  
 Sounding Frequency\*\*\*: LOW

Feet  
 0 500 1,000 1,500 2,000 2,500

**NOTES:**  
 Horizontal Coordinate System: North American Datum of 1983 (NAD83), projected to the State Plane Coordinate System (SPCS), Louisiana South Zone. Distance units in U.S. Survey Feet.  
 Vertical Datum: Soundings are shown in feet and indicate depths below Mean Lower Low Water (MLLW, 12-16). Datum Relationships for gage 01525 as of March 2020: 0.0' NAVD83, 2009.55 = -0.53' MLLW = 2.97' MLG  
 Distances on the Mississippi River, above and below Head of Passes are shown at 1 mile intervals.  
 The location of navigation aids are base on and provided by the U.S. Coast Guard.  
 2022 Aerial Photography data source: Optimal GEO (1998 DOQQ in green)  
 Reference is N.O.A. Navigation Chart No. 11361.  
 \*\* Shoalest Sounding per Quarter per Reach.  
 \*\*\* High frequency (200 kHz) survey data represents the first signal return at a sounding location and will include suspended solids, known as "fluff", if present. Low frequency (24 kHz) survey data normally penetrates through this "fluff" layer to depict elevations of consolidated bottom material. Low frequency accuracies may vary depending on channel conditions and fathometer settings.



**DISCLAIMER**  
 The United States Government furnishes these data and the recipient accepts and uses them with the express understanding that the data are not warranted for any purpose other than that for which they were prepared, or implied concerning the accuracy, completeness, reliability, usability or suitability for any particular purpose of the recipient. The user is responsible for the results of any use of the data under no liability whatsoever to any person by reason of any use of the data. These data are being made available to the public under the provisions of the Government Information Policy. The recipient may not transfer these data to others without also transferring the Disclaimer. The information depicted on the map represents the results of a survey conducted on or about the date of the survey. It is not intended to represent the general condition existing at that time.

U.S. ARMY CORPS OF ENGINEERS  
NEW ORLEANS DISTRICT

Submitted:	Surveyed By: JTB & DBD
Recommended: Chief, Survey Section	Plotted By: RSL
Approved: Chief, Waterways Maintenance Section	Checked By: MSK

MISSISSIPPI RIVER - B.R. TO GULF  
 SOUTHWEST PASS - SHEET 5  
 SW\_05\_SWP\_20240304\_CS\_FORUM  
 04 March 2024

Sheet Reference Number  
 5 of 13

Revision Number:  
 4.2-202 (04/20)