



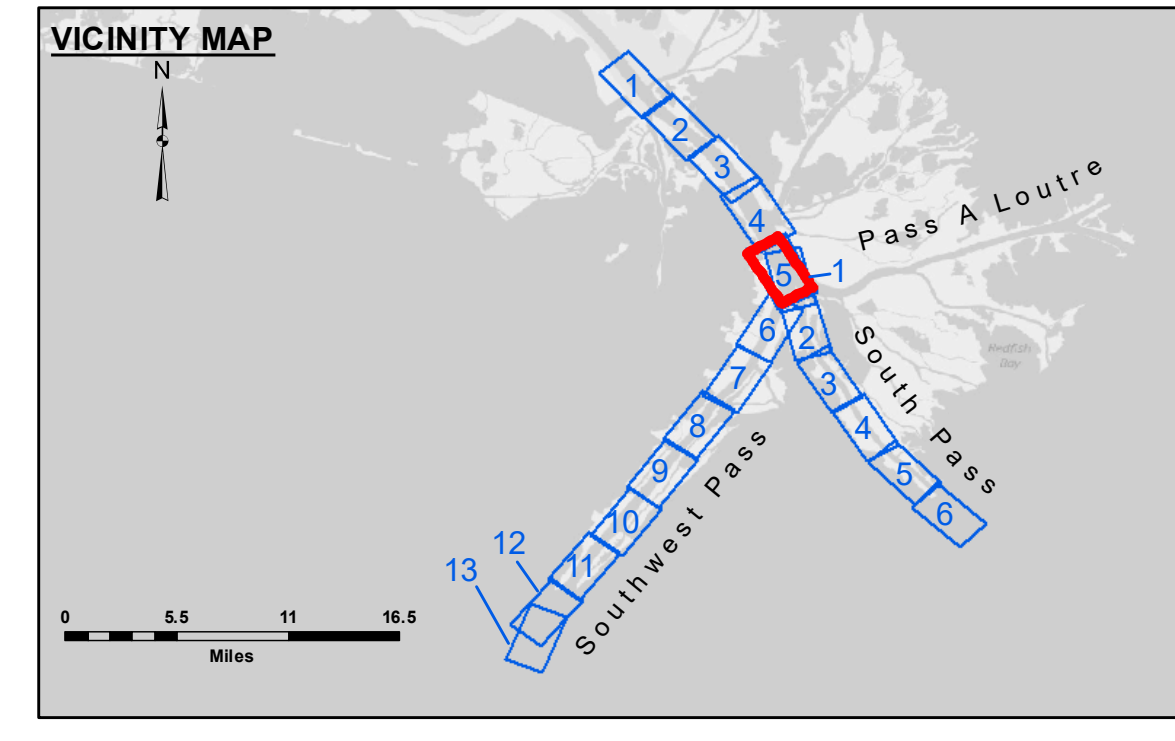
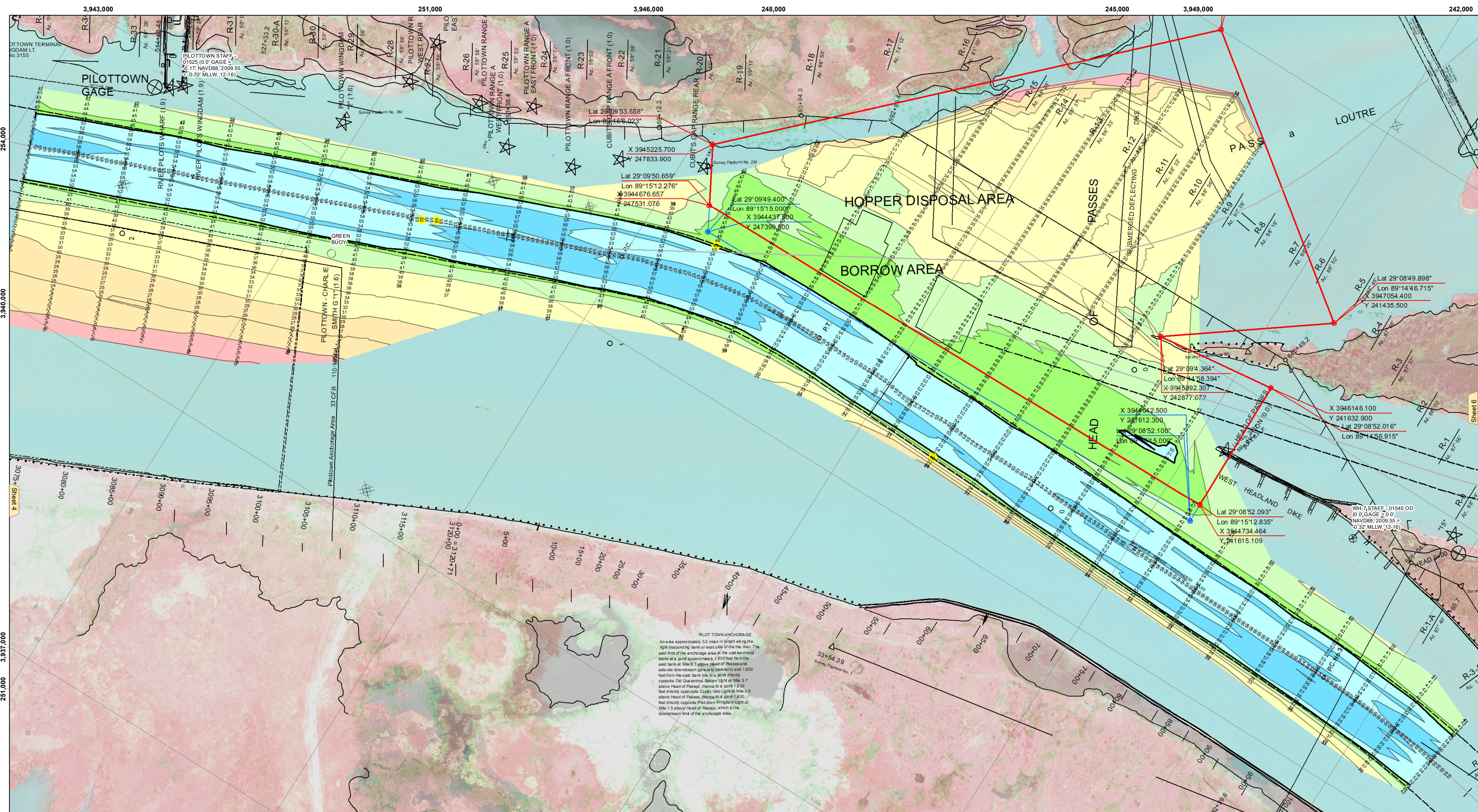
Distribution Liability: The United States Government furnishes these data and the recipient accepts and uses them with the express understanding that the data are provided for informational purposes only and are not to be used for any purpose other than that for which they were prepared. The user is responsible for the results of their own use of these data. The user is responsible for the results of their own use of these data. The user is responsible for the results of their own use of these data. The user is responsible for the results of their own use of these data.

Table with columns: Submitted, Recommended, Approved, Surveyed By, Plotted By, Checked By. Includes names: JH & RCC, RSL, MSK.

MISSISSIPPI RIVER - B.R. TO GULF SOUTHWEST PASS - SHEET 5 SW\_05\_SWP\_20240325\_CS 25 March 2024

Sheet Reference Number 5 of 13

Revision Number: 4.2-202 (06/20)



LEGEND table with symbols for Federal Navigation Channel, Cable Area, Placement Area, Borrow Area, Shoalest Sounding, Beacons, Red Navigation Buoys, Green Navigation Buoys, etc.

Navigation data: Gage Reading (0.9 MLLW @ P.T.(01525) @ 0930), Sea Conditions (ROUGH), Vessel Name (TOBIN), Survey Type (CONDITION, SB), Sounding Frequency (LOW), and a scale bar in feet.

NOTES: Horizontal Coordinate System (North American Datum of 1983...), Vertical Datum (Soundings are shown in feet...), The location of navigation aids are base on and provided by the U.S. Coast Guard.