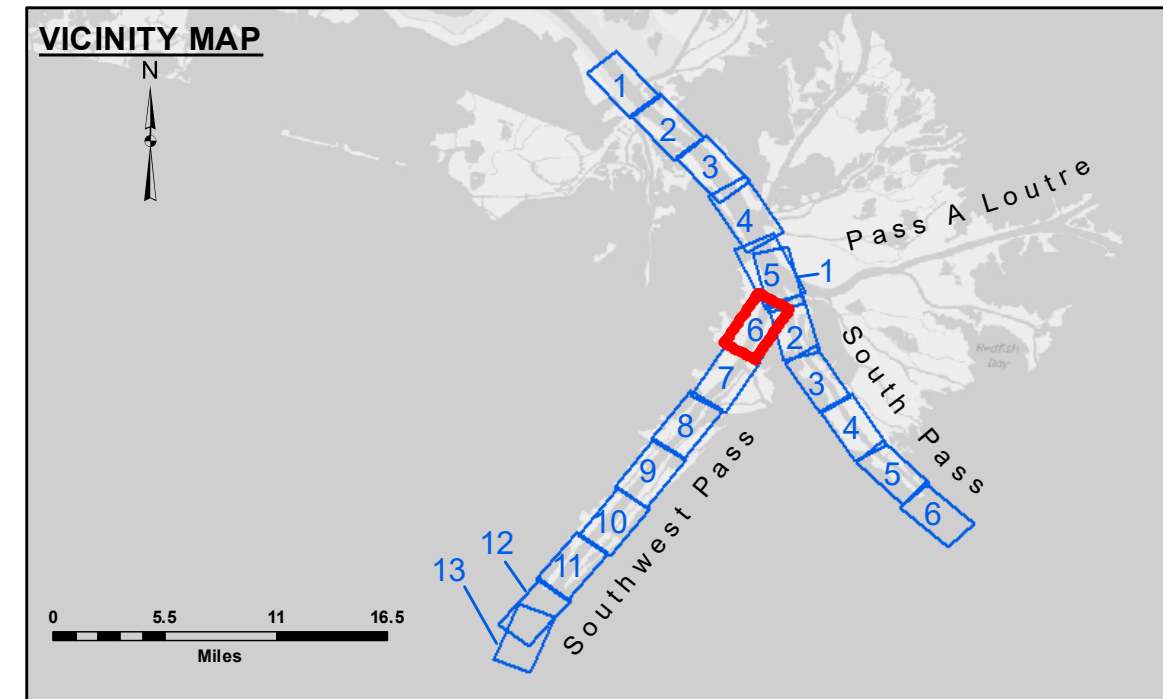
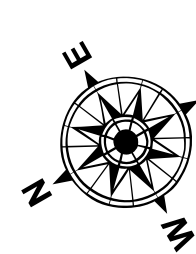


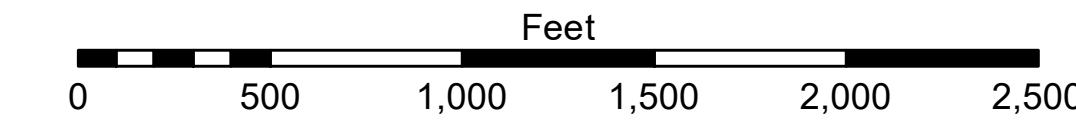
**DREDGE WHEELER
DREDGING RANGE 19 TO RANGE 54-B
WEST HALF OF THE CHANNEL SHEETS 5 & 6**



LEGEND		
— Federal Navigation Channel	○ Cable Area	□ Borrow Area
— Federal Navigation Center Line	■ Placement Area	● Shoalest Sounding**
— As-built Pipeline/Cable	□ Anchorage Area	☆ Beacon, General
..... Unconfirmed Pipeline/Cable	⊗ Obstruction Point	◆ Red Navigation Buoy
— Project Depth Contour	⚓ Wrecks-Submerged	◆ Green Navigation Buoy
		■ -10' and above
		■ -10' to -20'
		■ -20' to -30'
		■ -30' to -40'
		■ -40' to -45'
		■ -45' to -48.5'
		■ -48.5' to -55'
		■ -55' and below



Gage Reading: 1.8 MLLW @ HEAD OF PASSES @ 1200
 Sea Conditions: CHOPPY
 Vessel Name: BEAUVAIS
 Survey Type: CONDITION, SB
 Sounding Frequency***: LOW



NOTES:
 Horizontal Coordinate System: North American Datum of 1983 (NAD83), projected to the State Plane Coordinate System (SPCS), Louisiana South Zone. Distance units in U.S. Survey Feet.
 Vertical Datum: Soundings are shown in feet and indicate depths below Mean Lower Low Water (MLLW, 07-11). Datum Relationships for gage 01545 as of July 2015: 0.0' NAVD88 = -0.18' MLLW = 3.32' MLG
 Distances on the Mississippi River, above and below Head of Passes are shown at 1 mile intervals.
 The location of navigation aids are base on and provided by the U.S. Coast Guard.
 2016 Aerial Photography data source: Precision Aerial Reconnaissance, LLC (1998 DOQQ in green)
 Reference is N.O.A. Navigation Chart No. 11361.
 ** Shoalest Sounding per Quarter per Reach.
 *** High frequency (200 kHz) survey data represents the first signal return at a sounding location and will include suspended solids, known as "fluff", if present. Low frequency (24 kHz) survey data normally penetrates through this "fluff" layer to depict elevations of consolidated bottom material. Low frequency accuracies may vary depending on channel conditions and fathometer settings.



DISTRIBUTION STATEMENT: This document is unclassified. The data represents the results of a collection-processing for a specific US Army Corps of Engineers project. It is intended for use by the recipient only and is not to be distributed, copied, or reproduced in any form or by any means, electronic or mechanical, including photocopying, recording, or by any information storage and retrieval system, without the express written permission of the U.S. Army Corps of Engineers. The user is responsible for the results and accuracy of the data. The data is provided for information only and is not to be used for any other purpose. The information depicted on the map represents the results of a collection-processing for a specific US Army Corps of Engineers project. It is intended for use by the recipient only and is not to be distributed, copied, or reproduced in any form or by any means, electronic or mechanical, including photocopying, recording, or by any information storage and retrieval system, without the express written permission of the U.S. Army Corps of Engineers. The user is responsible for the results and accuracy of the data. The data is provided for information only and is not to be used for any other purpose.

U.S. ARMY CORPS OF ENGINEERS NEW ORLEANS DISTRICT	
Submitted By: JTB & MGF	Plotted By: TSS
Recommended By: Chart Survey Section	Checked By: MSK
Approved By: Chart Waterways Maintenance Section	

**MISSISSIPPI RIVER - B.R. TO GULF
SOUTHWEST PASS - SHEET 6
SW_06_SWP_20200820_CS
20 August 2020**

**Sheet
Reference
Number
6 of 13**

Revision Number:
4.1-20191105