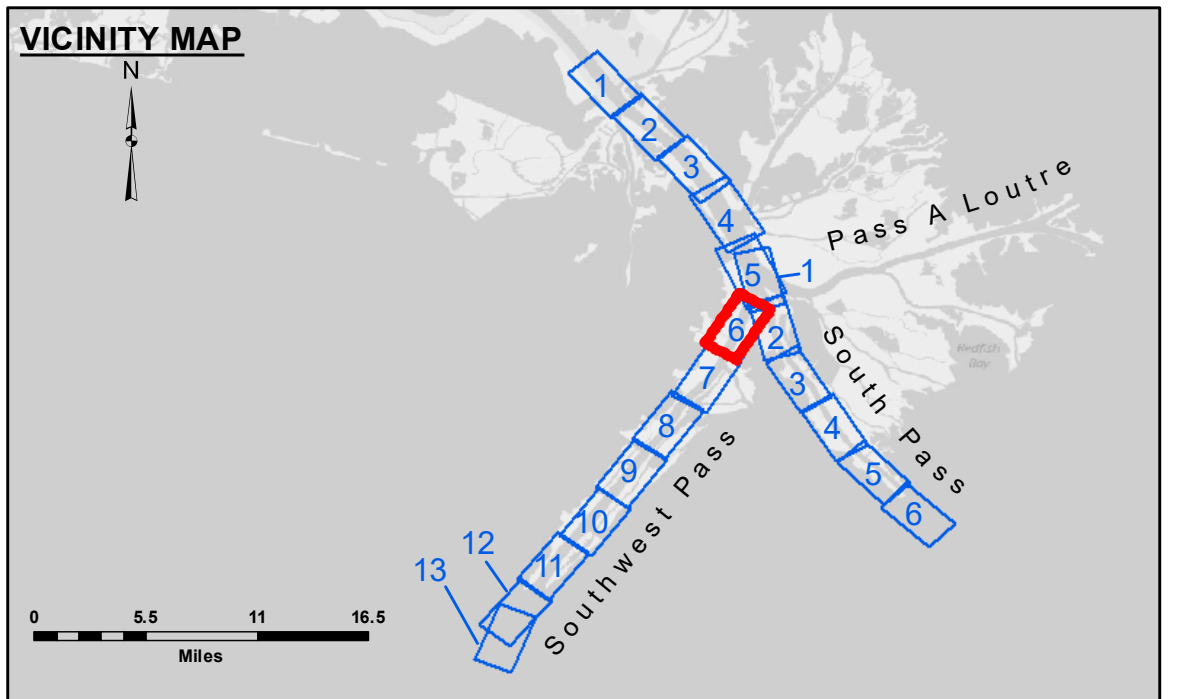
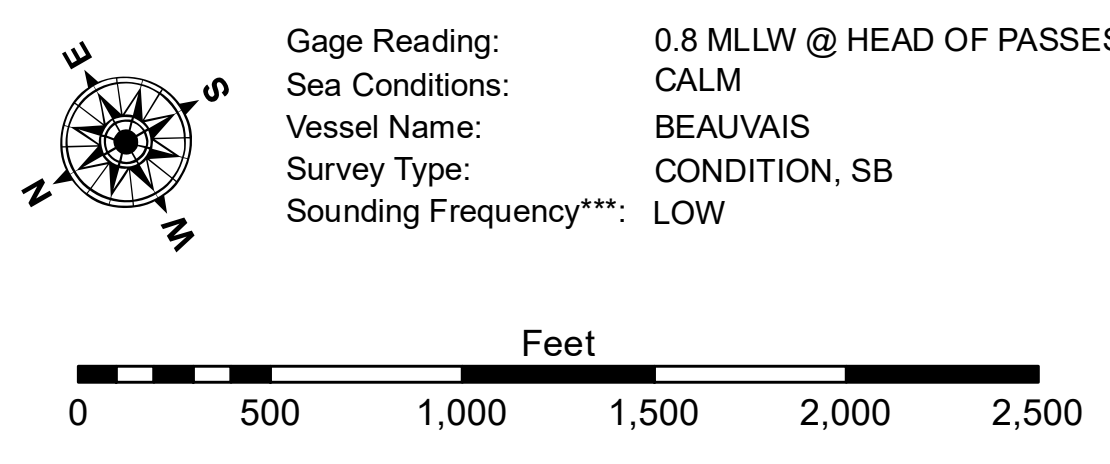


HOPPERDREDGE DODGE ISLAND  
DREDGING FROM STA. 220+00 SHEET 6  
TO STA. 360+00 ON SHEET 7  
FULL CHANNEL WIDTH



**LEGEND**

--- Federal Navigation Channel	○ Cable Area	□ Borrow Area	■ -10' and above
— Federal Navigation Center Line	□ Placement Area	● Shoalest Sounding**	■ -10' to -20'
— As-built Pipeline/Cable	□ Anchorage Area	★ Beacon, General	■ -20' to -30'
..... Unconfirmed Pipeline/Cable	⊗ Obstruction Point	◆ Red Navigation Buoy	■ -30' to -40'
— Project Depth Contour	⚓ Wrecks-Submerged	◆ Green Navigation Buoy	■ -40' to -45'
			■ -45' to -50'
			■ -50' to -55'
			■ -55' and below



**DISCLAIMER**  
 The United States Government furnishes these data and the recipient accepts and uses them with the express understanding that the data are not to be used for any purpose other than that for which they were originally prepared, or implied concerning the accuracy, completeness, reliability, usability, or availability for any particular purpose of the recipient. The user is responsible for the results of any use of the data. The United States Government does not warrant, either expressly or implied, that the data are free from errors or omissions. The user is responsible for the results of any use of the data. The United States Government does not warrant, either expressly or implied, that the data are free from errors or omissions. The user is responsible for the results of any use of the data. The United States Government does not warrant, either expressly or implied, that the data are free from errors or omissions. The user is responsible for the results of any use of the data.

U.S. ARMY CORPS OF ENGINEERS  
NEW ORLEANS DISTRICT

Submitted:	Surveyed By: JUC & MGF
Recommended:	Plotted By: LLB
Approved:	Checked By: MSK

MISSISSIPPI RIVER - B.R. TO GULF  
SOUTHWEST PASS - SHEET 6  
SW\_06\_SWP\_20230707\_CS  
07 July 2023

Sheet Reference Number  
6 of 13

Revision Number:  
4.2-20230429