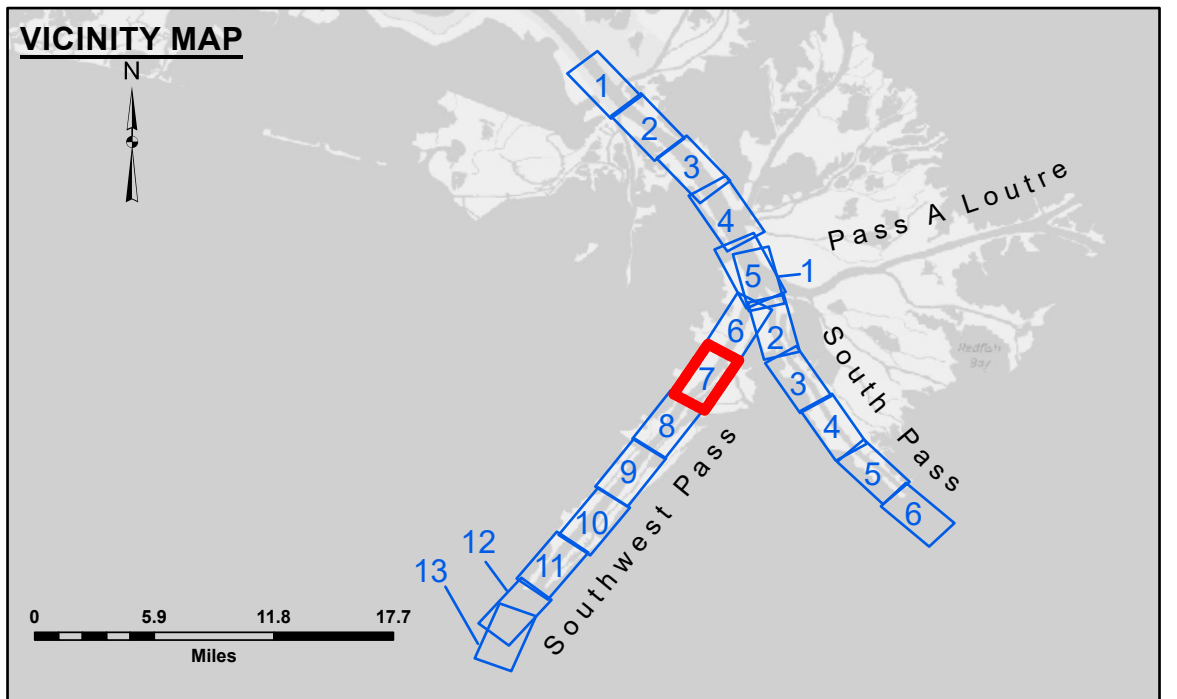


DISCLAIMER: The data represented on this map is the result of data collection and processing for a specific US Army Corps of Engineers activity and is not intended for use for any other purpose. The user is responsible for the results of any application of the data for other than its intended purpose. The Corps does not warrant the accuracy of the data. The Corps does not warrant the accuracy of the data for use in any other application. The Corps does not warrant the accuracy of the data for use in any other application. The Corps does not warrant the accuracy of the data for use in any other application.

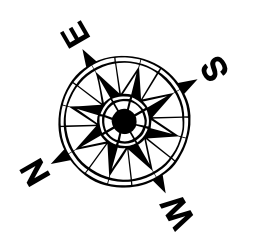
DISCLAIMER: The United States Government furnishes these data and the recipient accepts and uses them with the express understanding that the data are not intended for use in any other application. The recipient agrees to indemnify and hold the United States Government harmless from any and all claims, damages, losses, and expenses, including reasonable attorneys' fees, that may be incurred by the United States Government as a result of the recipient's use of the data for any purpose other than that for which the data were originally intended. The recipient may not transfer these data to others without also transferring this disclaimer. The information depicted on this map represents the results of a survey conducted on or about the date shown on the map. It is not intended to represent the general condition existing at that time.

Submitted:	Surveyed By: LLB & DED
Recommended:	Plotted By: TSS
Approved:	Checked By: MSK

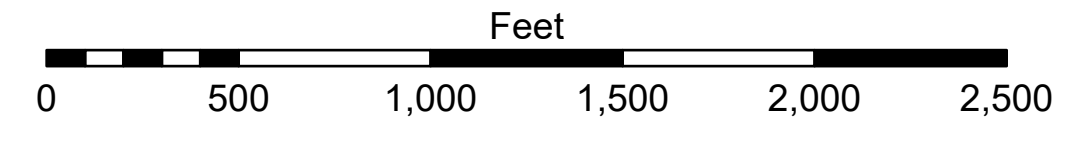
U.S. ARMY CORPS OF ENGINEERS
MISSISSIPPI RIVER - B. R. TO GULF
SOUTHWEST PASS - SHEET 7
SW_07_SWPX_20240822_CS
22 August 2024



LEGEND	
--- Federal Navigation Channel	● Cable Area
— Federal Navigation Center Line	□ Placement Area
— As-built Pipeline/Cable	□ Anchorage Area
..... Unconfirmed Pipeline/Cable	⊗ Obstruction Point
— Project Depth Contour	⚓ Wrecks-Submerged
3 Fluff Thickness (feet)*	★ Beacon, General
□ Borrow Area	◆ Red Navigation Buoy
● Shoalest Sounding**	◆ Green Navigation Buoy
■ -10' and above	
■ -10' to -20'	
■ -20' to -30'	
■ -30' to -40'	
■ -40' to -45'	
■ -45' to -50'	
■ -50' to -55'	
■ -55' and below	



Gage Reading: 0.4 MLLW @ HEAD OF PASSES (01545) @ 0840
 Sea Conditions: CALM
 Vessel Name: OB-173
 Survey Type: CONDITION, SB
 Sounding Frequency***: LOW



NOTES:
 Horizontal Coordinate System: North American Datum of 1983 (NAD83), projected to the State Plane Coordinate System (SPCS), Louisiana South Zone. Distance units in U.S. Survey Feet.
 Vertical Datum: Mean Low Water (MLLW), 12-16'.
 Soundings are shown in feet and indicate depths below Mean Low Water (MLLW, 12-16'). Datum Relationships for gage 01545 as of March 2020: 0.0' NAVD83, 2009.55 = -0.32' MLLW = 3.18' MLG
 Distances on the Mississippi River, above and below Head of Pases are shown at 1 mile intervals.
 The location of navigation aids are base on and provided by the U.S. Coast Guard.
 2024 Aerial Photography data source: Optimal GEO (1998 DOQQ in green)
 Reference is N.O.A.A. Navigation Chart No. 11361.
 ** Shoalest Sounding per Quarter per Reach.
 *** High frequency (200 kHz) survey data represents the first signal return at a sounding location and will include suspended solids, known as "fluff", if present. Low frequency (24 kHz) survey data normally penetrates through this "fluff" layer to depict elevations of consolidated bottom material. Low frequency accuracies may vary depending on channel conditions and fathometer settings.

MISSISSIPPI RIVER - B. R. TO GULF
SOUTHWEST PASS - SHEET 7
SW_07_SWPX_20240822_CS
22 August 2024

Sheet Reference Number
7 of 13

Revision Number:
 5.23.12-3.23.12.3