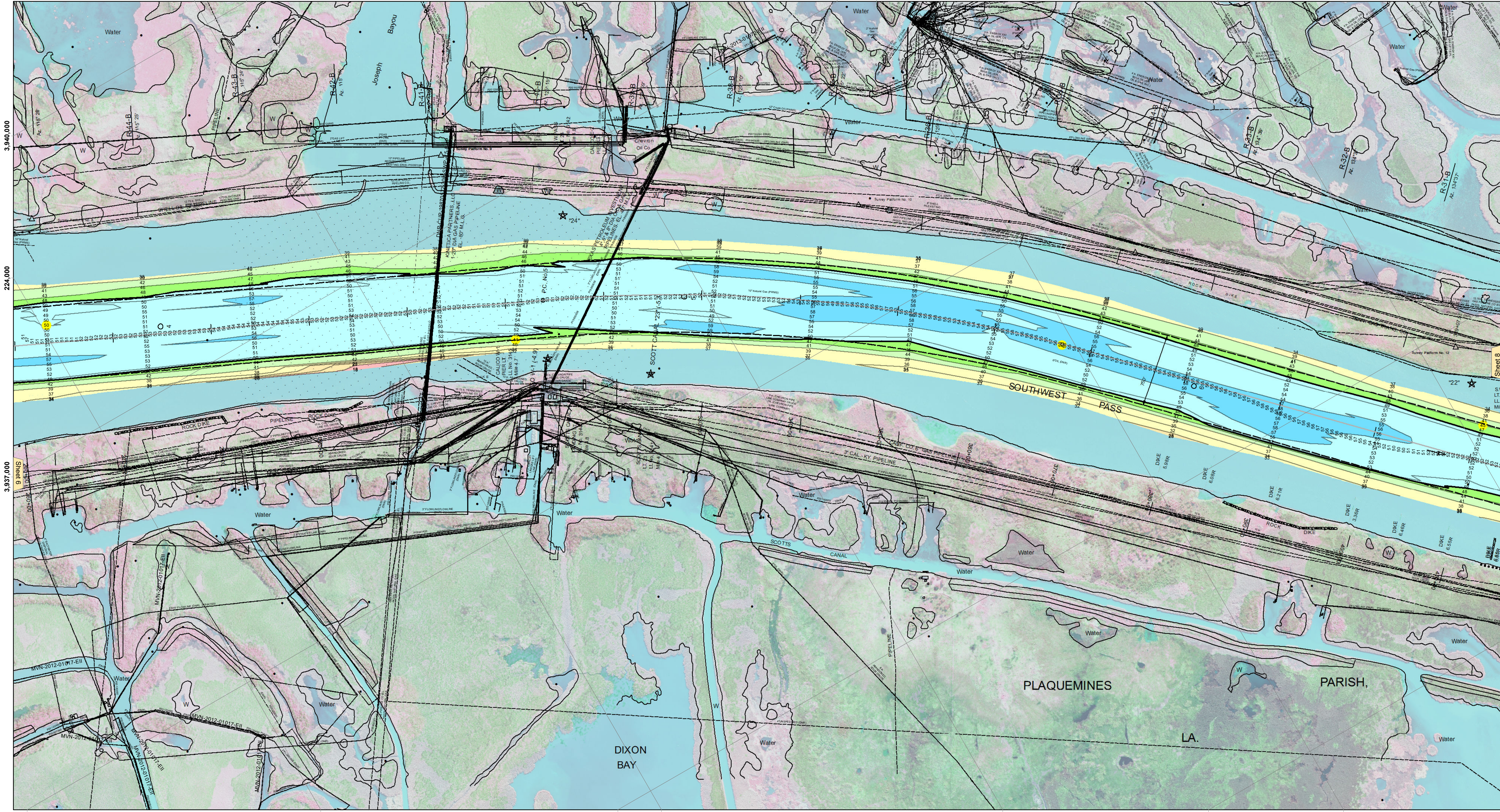
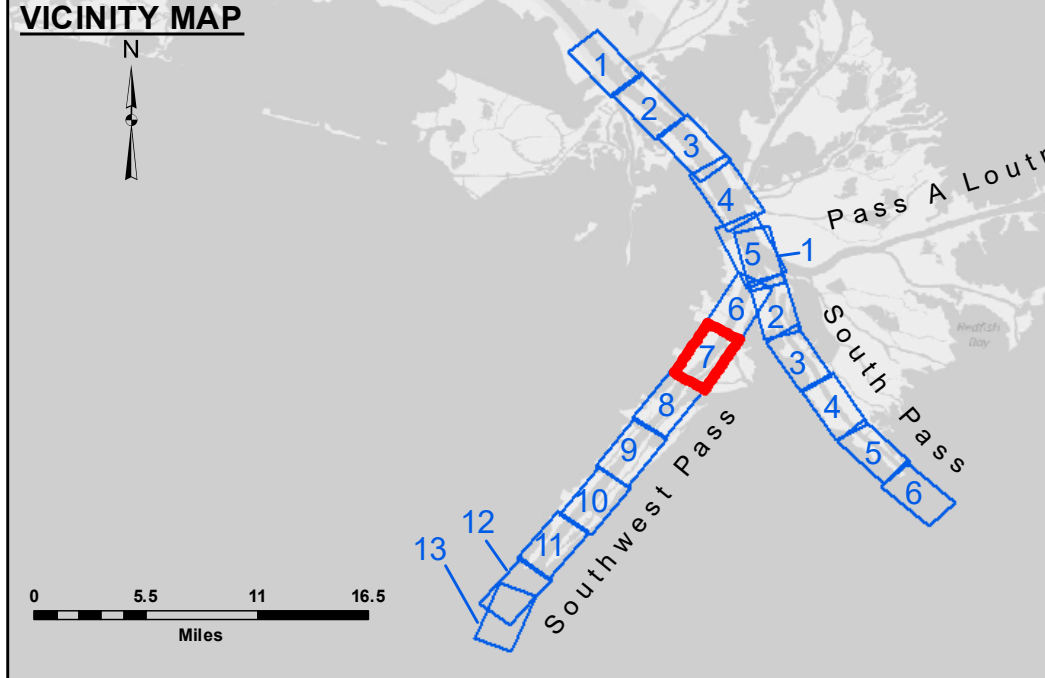


221,000 3,940,000 218,000 3,937,000 215,000 212,000 3,934,000

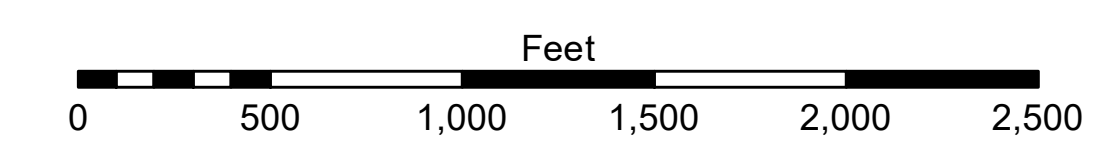
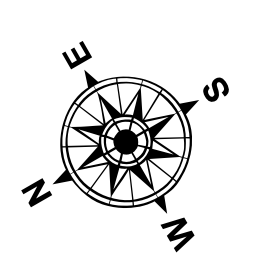


3,934,000 224,000 3,931,000 221,000 218,000 3,928,000 215,000



LEGEND

— Federal Navigation Channel	● Cable Area	□ Borrow Area	■ -10' and above
— Federal Navigation Center Line	▭ Placement Area	● Shoalest Sounding**	■ -10' to -20'
— As-built Pipeline/Cable	⊠ Anchorage Area	★ Beacon, General	■ -20' to -30'
..... Unconfirmed Pipeline/Cable	⊗ Obstruction Point	◆ Red Navigation Buoy	■ -30' to -40'
— Project Depth Contour	✦ Wrecks-Submerged	◆ Green Navigation Buoy	■ -40' to -45'
			■ -45' to -48.5'
			■ -48.5' to -55'
			■ -55' and below



Gage Reading: 1.3 MLLW @ HEAD OF PASSES @ 1150
 Sea Conditions: CALM
 Vessel Name: BEAUVAIS
 Survey Type: CONDITION, SB
 Sounding Frequency***: LOW

NOTES:
 Horizontal Coordinate System: North American Datum of 1983 (NAD83), projected to the State Plane Coordinate System (SPCS), Louisiana South Zone. Distance units in U.S. Survey Feet.
 Vertical Datum: 0.0' NAVD88 = -0.18' MLLW = 3.32' MLG
 Datums Relationships for gage 01545 as of July 2015: 0.0' NAVD88 = -0.18' MLLW = 3.32' MLG
 Distances on the Mississippi River, above and below Head of Passes are shown at 1 mile intervals.
 The location of navigation aids are based on and provided by the U.S. Coast Guard.
 2016 Aerial Photography data source: Precision Aerial Reconnaissance, LLC (1998 DOQQ in green)
 Reference is N.O.A. Navigation Chart No. 11361.
 ** Shoalest Sounding per Quarter per Reach.
 *** High frequency (200 kHz) survey data represents the first signal return at a sounding location and will include suspended solids, known as "fluff", if present. Low frequency (24 kHz) survey data normally penetrates through this "fluff" layer to depict elevations of consolidated bottom material. Low frequency accuracies may vary depending on channel conditions and fathometer settings.



DISCLAIMER
 Access Constraints: The United States Government furnishes these data and the recipient accepts and uses them with the express understanding that they are not to be distributed, reproduced, or used in any way other than for the specific purpose for which they were provided. The user is responsible for the results, accuracy, and reliability of any information derived from the use of these data. The United States Government assumes no responsibility for the results of any use of these data other than as intended by the United States Government. The information depicted on this map represents the results of a survey conducted at the time the map was prepared and does not constitute a warranty or representation of the condition existing at that time.

U.S. ARMY CORPS OF ENGINEERS
 NEW ORLEANS DISTRICT

Submitted By:	JH & MGF
Recommended By:	RSL
Checked By:	MSK

**MISSISSIPPI RIVER - B.R. TO GULF
 SOUTHWEST PASS - SHEET 7
 SW_07_SWP_20180710_CS_FORUM
 10 July 2018**

**Sheet Reference Number
 7 of 13**

Revision Number: 3.13-20160811