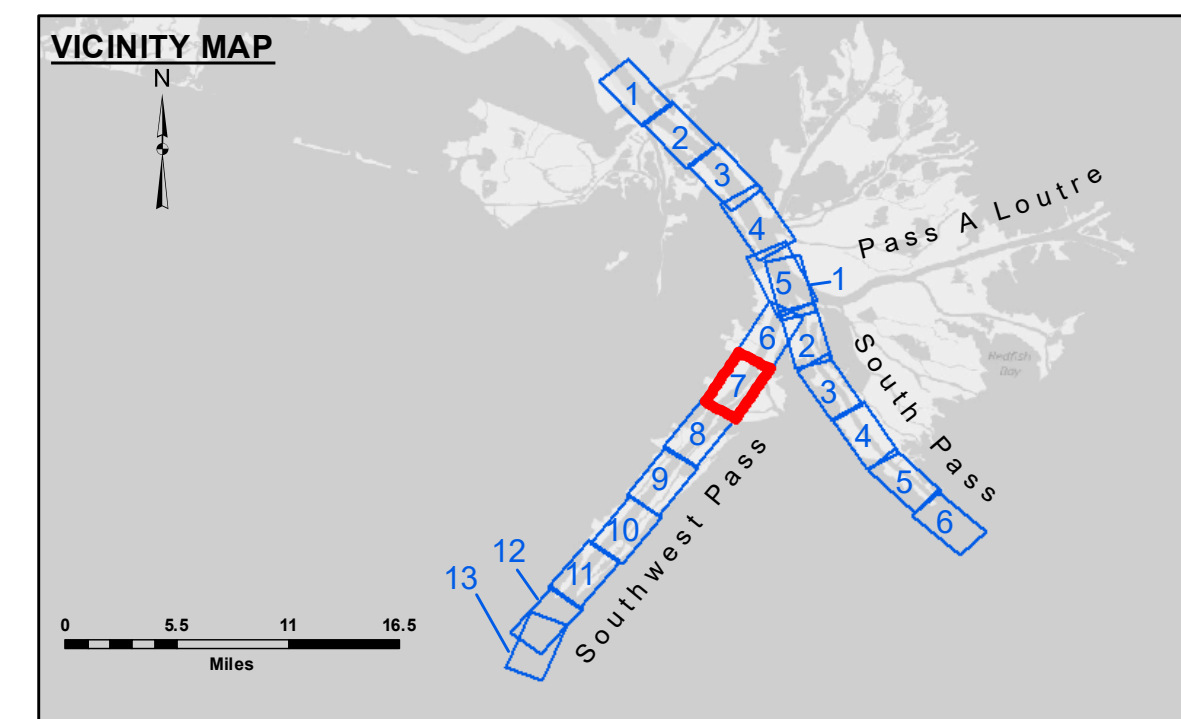
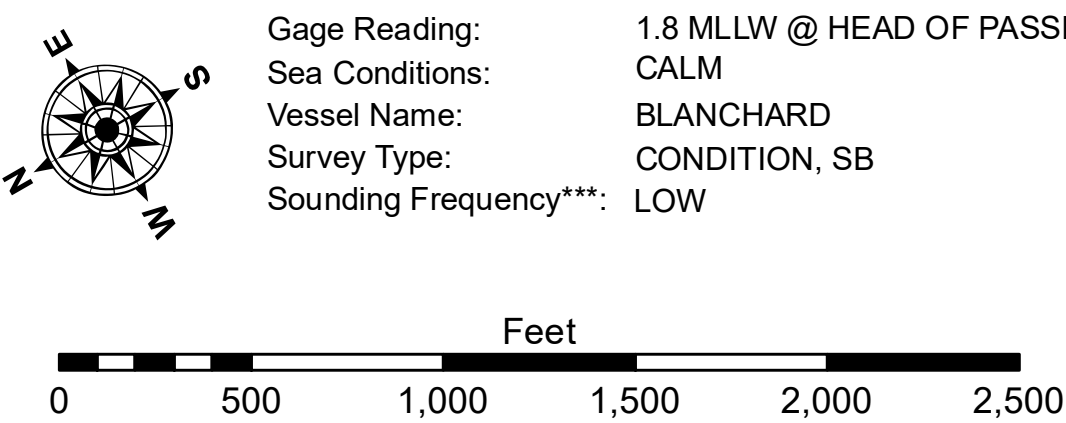


CUTTERHEAD DREDGE R.S. WEEKS  
DREDGING MILE 5.0 BHP TO MILE 6.1 BHP  
WEST HALF OF THE CHANNEL



LEGEND		
— Federal Navigation Channel	○ Cable Area	□ Borrow Area
— Federal Navigation Center Line	□ Placement Area	● Shoalest Sounding**
— As-built Pipeline/Cable	□ Anchorage Area	☆ Beacon, General
⋯ Unconfirmed Pipeline/Cable	⊗ Obstruction Point	♦ Red Navigation Buoy
— Project Depth Contour	⚓ Wrecks-Submerged	◆ Green Navigation Buoy
		■ -10' and above
		■ -10' to -20'
		■ -20' to -30'
		■ -30' to -40'
		■ -40' to -45'
		■ -45' to -48.5'
		■ -48.5' to -55'
		■ -55' and below



**NOTES:**  
 Horizontal Coordinate System: North American Datum of 1983 (NAD83), projected to the State Plane Coordinate System (SPCS), Louisiana South Zone. Distance units in U.S. Survey Feet.  
 Vertical Datum: Soundings are shown in feet and indicate depths below Mean Lower Low Water (MLLW, 07-11). Datum Relationships for gage 01545 as of July 2015: 0.0' NAVD86 = -0.18' MLLW = 3.32' MLG  
 Distances on the Mississippi River, above and below Head of Passes are shown at 1 mile intervals.  
 The location of navigation aids are base on and provided by the U.S. Coast Guard.  
 2016 Aerial Photography data source: Precision Aerial Reconnaissance, LLC (1998 DOQQ in green)  
 Reference is N.O.A. Navigation Chart No. 11361.  
 \*\* Shoalest Sounding per Quarter per Reach.  
 \*\*\* High frequency (200 kHz) survey data represents the first signal return at a sounding location and will include suspended solids, known as "fluff", if present. Low frequency (24 kHz) survey data normally penetrates through this "fluff" layer to depict elevations of consolidated bottom material. Low frequency accuracies may vary depending on channel conditions and fathometer settings.



**DISTRIBUTION LIABILITY:** The data represents the results of data collection/processing for a specific US Army Corps of Engineers project and is only valid for its intended use, content, time and accuracy specifications. The user is responsible for the results of any application. Approximation of the data for other than its intended purpose.  
 Data Constants: Hydrographic survey data is subject to change rapidly due to several factors including but not limited to dredging activity, channel migration, and other factors. The user is responsible for the hydrographical conditions which develop after the date of the survey. The user is responsible for the data used in the project. The information depicted on the map represents the results of a survey and is not to be used for any purpose other than that for which it was collected. The user is responsible for the data used in the project. The information depicted on the map represents the results of a survey and is not to be used for any purpose other than that for which it was collected.

U.S. ARMY CORPS OF ENGINEERS NEW ORLEANS DISTRICT		
Submitted:	Surveyed By: LLB & DBD	Plotted By: MSK
Recommended:	Checked By: MSK	Checked By: MSK
Approved:	Checked By: MSK	

**MISSISSIPPI RIVER - B.R. TO GULF  
 SOUTHWEST PASS - SHEET 7  
 SW\_07\_SWP\_20190125\_CS  
 25 January 2019**

**Sheet Reference Number  
 7 of 13**