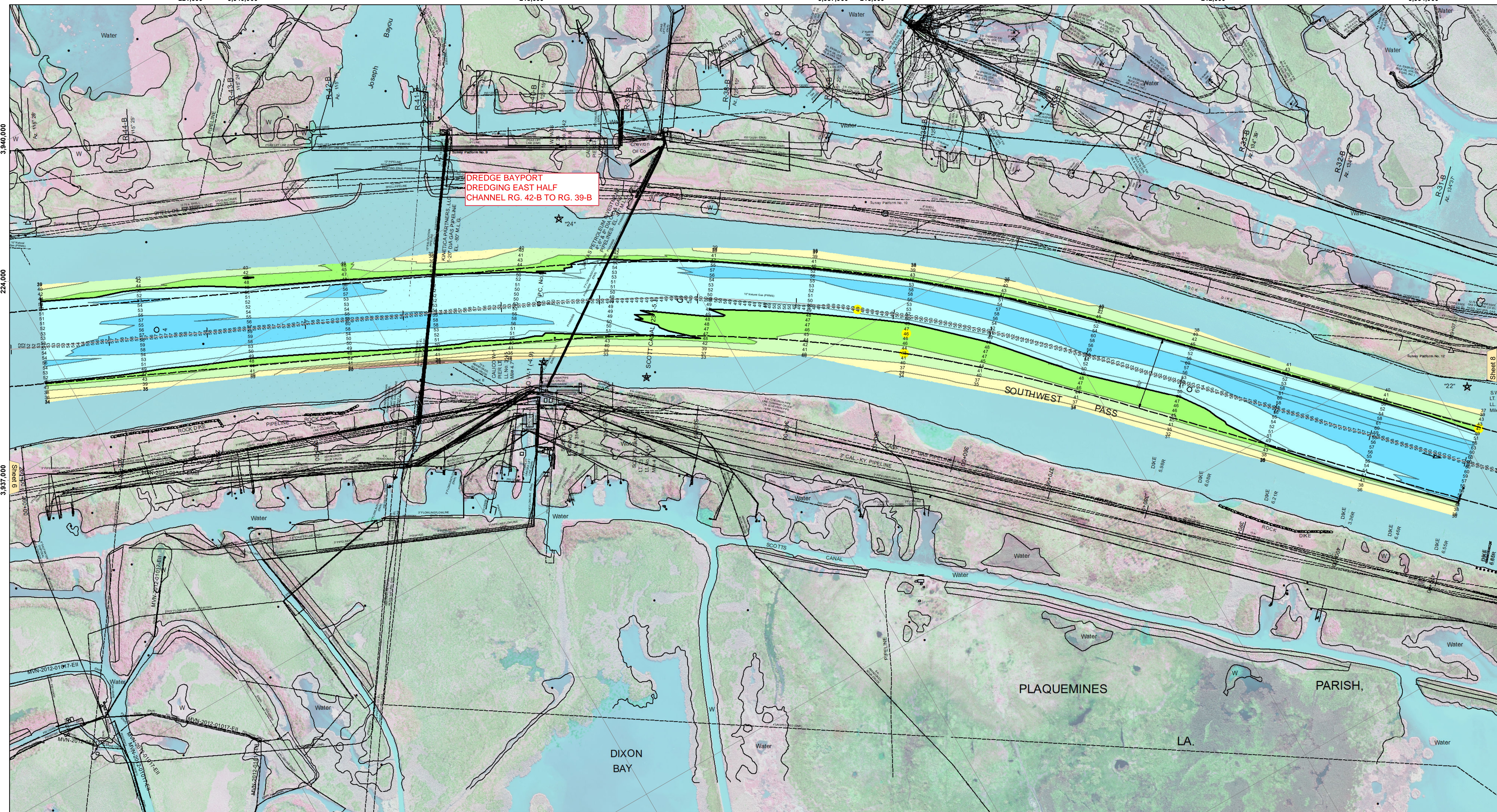


221,000 3,940,000 218,000 3,937,000 215,000 212,000 3,934,000



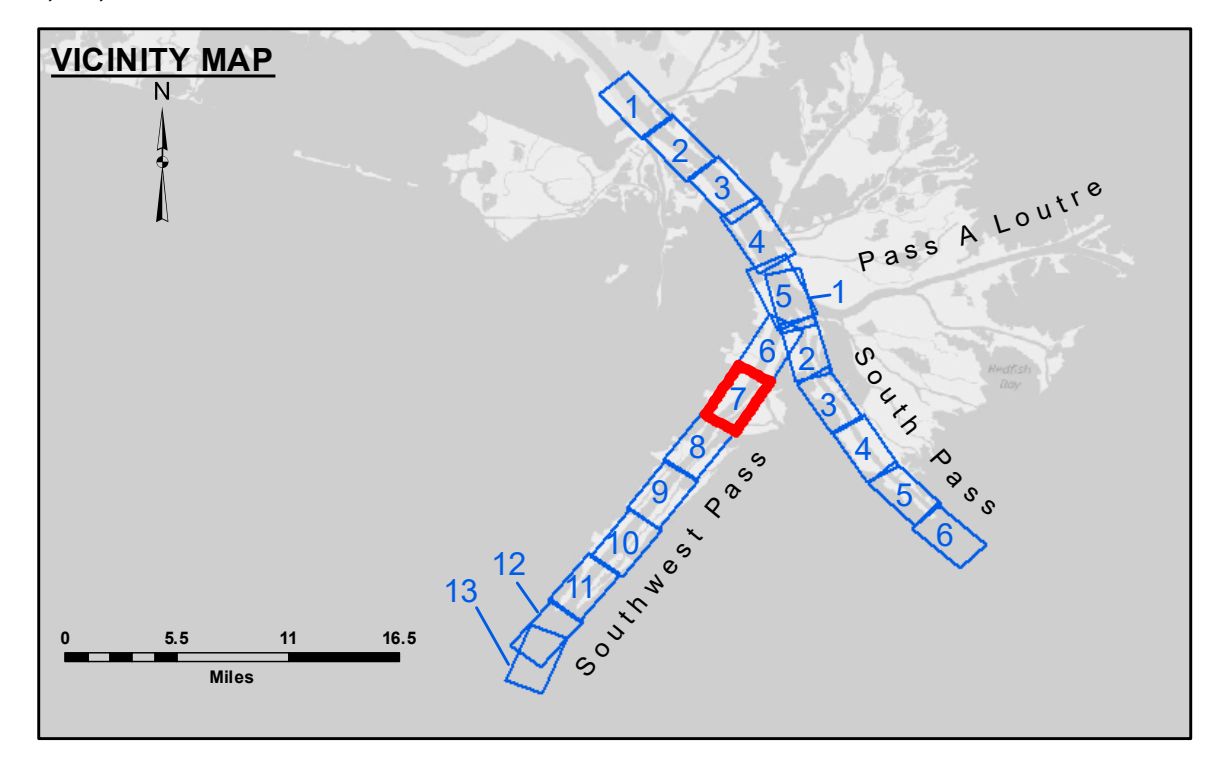
DREDGE BAYPORT  
DREDGING EAST HALF  
CHANNEL RG. 42-B TO RG. 39-B



Distribution Liability: The data represents the results of data collection/processing for a specific US Army Corps of Engineers project...  
Access Constraints: The United States Government furnishes these data and the recipient accepts and uses them with the express understanding that the data are provided for informational purposes only...  
Data: Constants Hydrographic survey data is subject to change frequently due to several factors including but not limited to dredging operations...  
The information depicted on the map represents the results of a survey... considered to represent the general condition existing at that time.

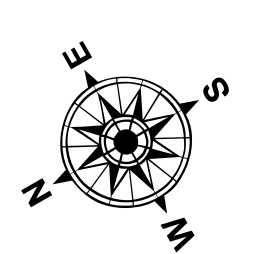
U.S. ARMY CORPS OF ENGINEERS NEW ORLEANS DISTRICT  
Submitted: JH & MGF  
Recommended: RSL  
Approved: MSK  
Checked By: MSK

MISSISSIPPI RIVER - B.R. TO GULF  
SOUTHWEST PASS - SHEET 7  
SW\_07\_SWP\_20190408\_CS  
08 April 2019

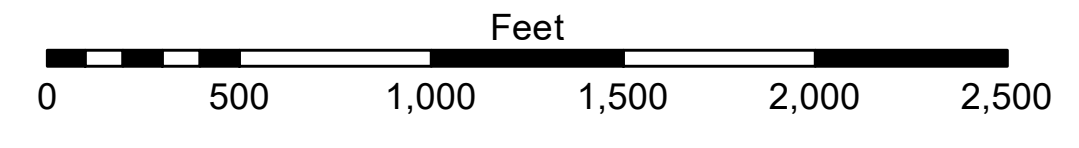


LEGEND

--- Federal Navigation Channel	○ Cable Area	□ Borrow Area	■ -10' and above
— Federal Navigation Center Line	□ Placement Area	● Shoalest Sounding**	■ -10' to -20'
— As-built Pipeline/Cable	□ Anchorage Area	☆ Beacon, General	■ -20' to -30'
..... Unconfirmed Pipeline/Cable	⊗ Obstruction Point	◆ Red Navigation Buoy	■ -30' to -40'
— Project Depth Contour	⚓ Wrecks-Submerged	◆ Green Navigation Buoy	■ -40' to -45'
			■ -45' to -48.5'
			■ -48.5' to -55'
			■ -55' and below



Gage Reading: 2.6 MLLW @ HEAD OF PASSES @ 1205  
Sea Conditions: CHOPPY  
Vessel Name: BEAUVAIS  
Survey Type: CONDITION, SB  
Sounding Frequency\*\*\*: LOW



NOTES:  
Horizontal Coordinate System: North American Datum of 1983 (NAD83), projected to the State Plane Coordinate System (SPCS), Louisiana South Zone. Distance units in U.S. Survey Feet.  
Vertical Datum: 2.6 MLLW @ HEAD OF PASSES @ 1205  
Soundings are shown in feet and indicate depths below Mean Lower Low Water (MLLW, 07-11). Datum Relationships for gage 01545 as of July 2015: 0.0' NAVD86 = -0.18' MLLW = 3.32' MLG  
Distances on the Mississippi River, above and below Head of Passes are shown at 1 mile intervals.  
The location of navigation aids are base on and provided by the U.S. Coast Guard.  
2016 Aerial Photography data source: Precision Aerial Reconnaissance, LLC (1998 DOQQ in green)  
Reference is N.O.A. Navigation Chart No. 11361.  
\*\* Shoalest Sounding per Quarter per Reach.  
\*\*\* High frequency (200 kHz) survey data represents the first signal return at a sounding location and will include suspended solids, known as "fluff", if present. Low frequency (24 kHz) survey data normally penetrates through this "fluff" layer to depict elevations of consolidated bottom material. Low frequency accuracies may vary depending on channel conditions and fathometer settings.

Sheet Reference Number  
7 of 13  
Revision Number: 3.13-20160811