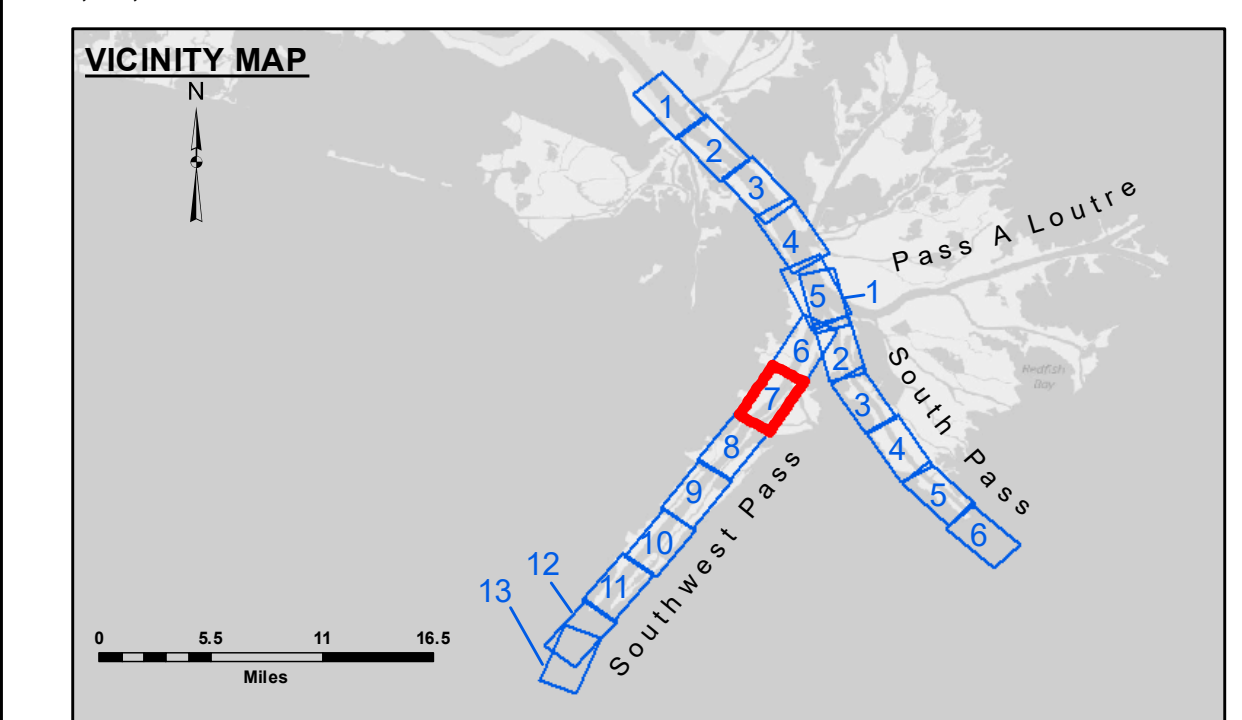
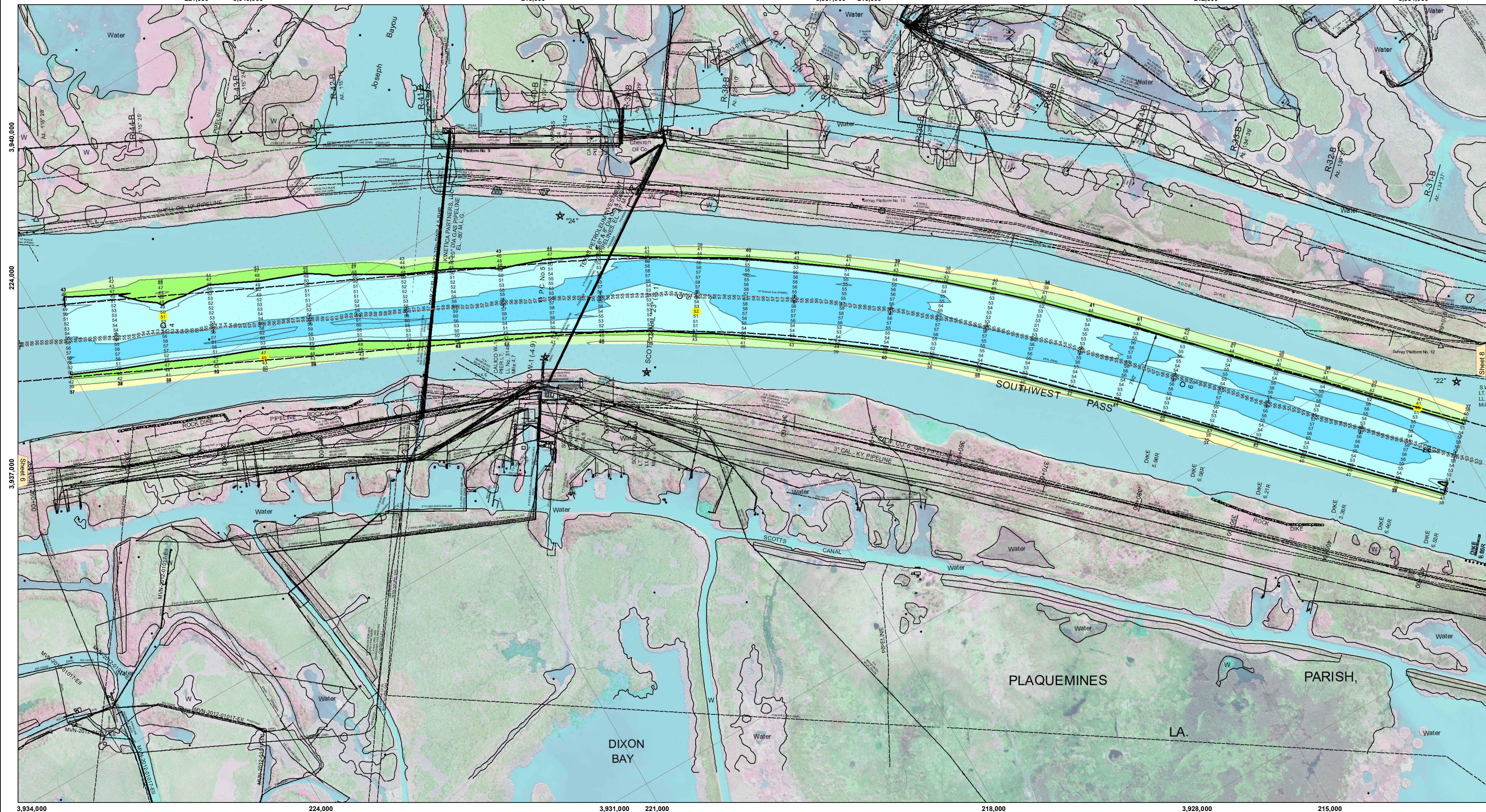


221,000 3,940,000 218,000 3,937,000 215,000 212,000 3,934,000



LEGEND

--- Federal Navigation Channel	○ Cable Area	□ Borrow Area	■ -10' and above
— Federal Navigation Center Line	▭ Placement Area	● Shoalest Sounding**	■ -10' to -20'
— As-built Pipeline/Cable	⊗ Anchorage Area	★ Beacon, General	■ -20' to -30'
..... Unconfirmed Pipeline/Cable	⊗ Obstruction Point	◆ Red Navigation Buoy	■ -30' to -40'
— Project Depth Contour	▲ Wrecks-Submerged	◆ Green Navigation Buoy	■ -40' to -45'
			■ -45' to -48.5'
			■ -48.5' to -55'
			■ -55' and below

Gage Reading: 1.9 MLLW @ HEAD OF PASSES @ 0855
 Sea Conditions: CALM
 Vessel Name: JOHN BOPP
 Survey Type: CONDITION, SB
 Sounding Frequency***: LOW

Vertical Datum: 0.0' NAVD83 = -0.18' MLLW = 3.32' MLG

Distances on the Mississippi River, above and below Head of Passes are shown at 1 mile intervals.

The location of navigation aids are based on and provided by the U.S. Coast Guard.

2016 Aerial Photography data source: Precision Aerial Reconnaissance, LLC (1998 DOQQ in green)

Reference is N.O.A. Navigation Chart No. 11361.

** Shoalest Sounding per Quarter per Reach.

*** High frequency (200 kHz) survey data represents the first signal return at a sounding location and will include suspended solids, known as "fluff", if present. Low frequency (24 kHz) survey data normally penetrates through this "fluff" layer to depict elevations of consolidated bottom material. Low frequency accuracies may vary depending on channel conditions and fathometer settings.

Scale: 0, 500, 1,000, 1,500, 2,000, 2,500 Feet

NOTES:

Horizontal Coordinate System: North American Datum of 1983 (NAD83), projected to the State Plane Coordinate System (SPCS), Louisiana South Zone. Distance units in U.S. Survey Feet.

Vertical Datum: 0.0' NAVD83 = -0.18' MLLW = 3.32' MLG

Distances on the Mississippi River, above and below Head of Passes are shown at 1 mile intervals.

The location of navigation aids are based on and provided by the U.S. Coast Guard.

2016 Aerial Photography data source: Precision Aerial Reconnaissance, LLC (1998 DOQQ in green)

Reference is N.O.A. Navigation Chart No. 11361.

** Shoalest Sounding per Quarter per Reach.

*** High frequency (200 kHz) survey data represents the first signal return at a sounding location and will include suspended solids, known as "fluff", if present. Low frequency (24 kHz) survey data normally penetrates through this "fluff" layer to depict elevations of consolidated bottom material. Low frequency accuracies may vary depending on channel conditions and fathometer settings.



DISTRIBUTION LIABILITY: The data represents the results of data collection processing for a specific US Army Corps of Engineers project. It is only valid for its intended use, content, time and accuracy specifications. The user is responsible for the results of any use of the data. Approximation of the data for other than intended purpose.

Data Constraints: Hydrographic survey data is subject to change rapidly due to several factors including but not limited to dredging, shifting sandbars, and other natural processes. The user should verify the hydrographical conditions which develop after the date of the data collection. Prudent mariners should not rely solely upon it.

**U.S. ARMY CORPS OF ENGINEERS
NEW ORLEANS DISTRICT**

Submitted:	Surveyed By: LLB & RCC
Recommended: Chief Survey Section	Plotted By: TSS
Approved: Chief Waterways Maintenance Section	Checked By: MSK

**MISSISSIPPI RIVER - B.R. TO GULF
SOUTHWEST PASS - SHEET 7
SW_07_SWP_20190924_CS
24 September 2019**

**Sheet Reference Number
7 of 13**

Revision Number:
4.0-20190702