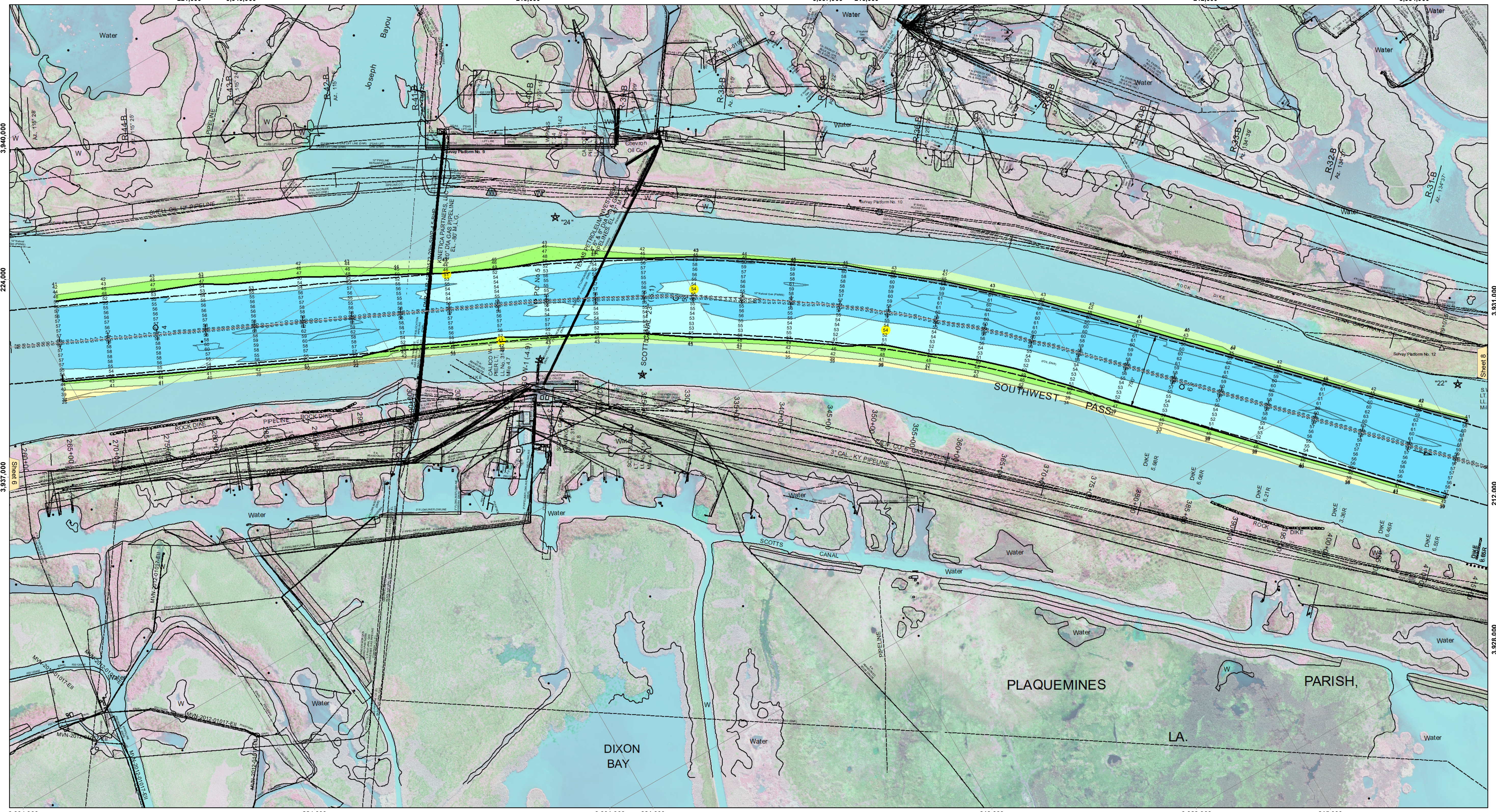


221,000 3,940,000 218,000 3,937,000 215,000 212,000 3,934,000



3,940,000

224,000

3,937,000

3,934,000

3,931,000

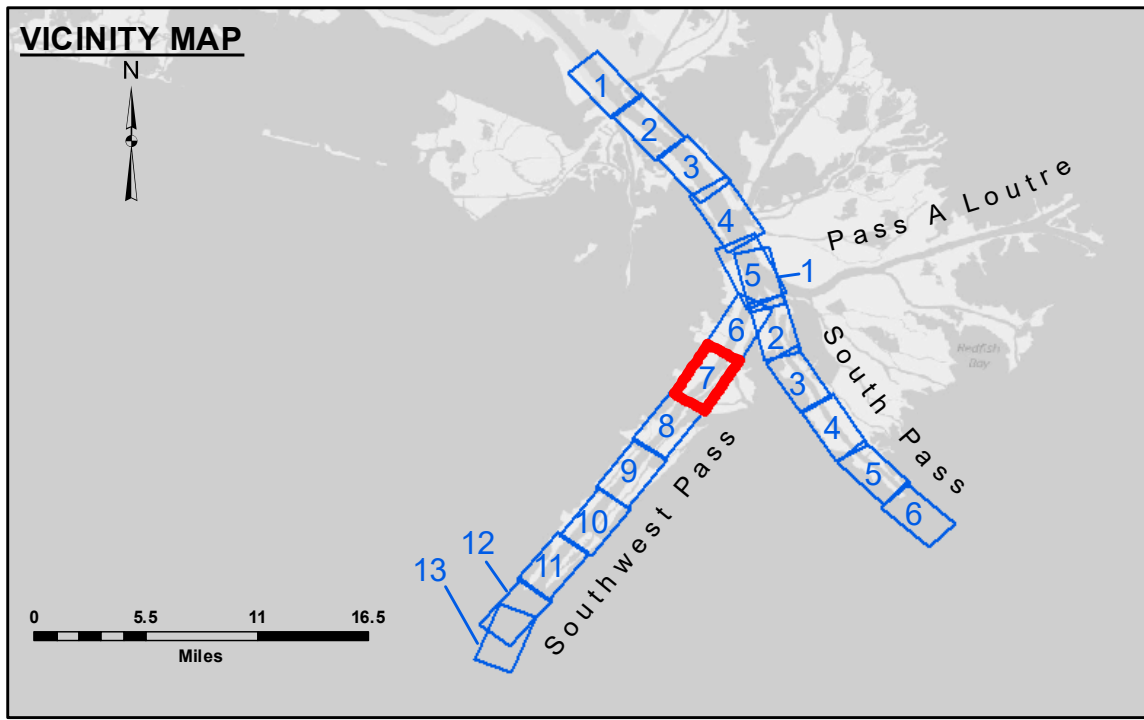
212,000

3,928,000

218,000

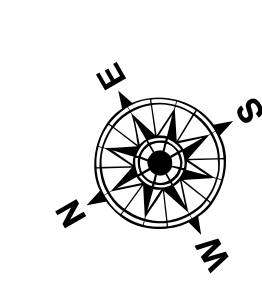
3,928,000

215,000

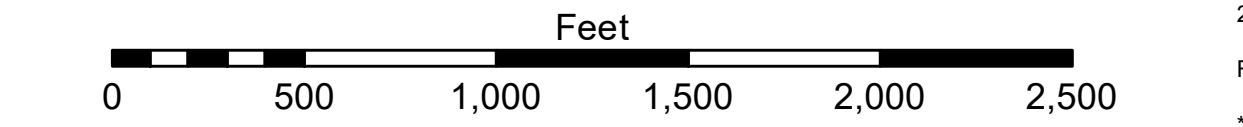


**LEGEND**

--- Federal Navigation Channel	● Cable Area	□ Borrow Area	■ -10' and above
— Federal Navigation Center Line	□ Placement Area	● Shoalest Sounding**	■ -10' to -20'
— As-built Pipeline/Cable	□ Anchorage Area	★ Beacon, General	■ -20' to -30'
..... Unconfirmed Pipeline/Cable	⊗ Obstruction Point	◆ Red Navigation Buoy	■ -30' to -40'
— Project Depth Contour	⚓ Wrecks-Submerged	◆ Green Navigation Buoy	■ -40' to -45'
			■ -45' to -50'
			■ -50' to -55'
			■ -55' and below



Gage Reading: 1.3 MLLW @ HEAD OF PASSES @ 1300  
 Sea Conditions: CALM  
 Vessel Name: JOHN BOPP  
 Survey Type: CONDITION, SB  
 Sounding Frequency\*\*\*: LOW



**NOTES:**  
 Horizontal Coordinate System: North American Datum of 1983 (NAD83), projected to the State Plane Coordinate System (SPCS), Louisiana South Zone. Distance units in U.S. Survey Feet.  
 Vertical Datum: Soundings are shown in feet and indicate depths below Mean Lower Low Water (MLLW, 12-16). Datum Relationships for gage 01545 as of March 2020: 0.0' NAVD83, 2009.55 = -0.32' MLLW = 3.18' MLG  
 Distances on the Mississippi River, above and below Head of Passes are shown at 1 mile intervals.  
 The location of navigation aids are base on and provided by the U.S. Coast Guard.  
 2016 Aerial Photography data source: Precision Aerial Reconnaissance, LLC (1998 DOQQ in green)  
 Reference is N.O.A. Navigation Chart No. 11361.  
 \*\* Shoalest Sounding per Quarter per Reach.  
 \*\*\* High frequency (200 kHz) survey data represents the first signal return at a sounding location and will include suspended solids, known as "fluff", if present. Low frequency (24 kHz) survey data normally penetrates through this "fluff" layer to depict elevations of consolidated bottom material. Low frequency accuracies may vary depending on channel conditions and fathometer settings.



**DISCLAIMER:**  
 The United States Government furnishes these data and the recipient accepts and uses them with the express understanding that the data are not warranted for accuracy, completeness, or reliability for any particular purpose of the recipient. The user is responsible for the results of any use of the data under no liability whatsoever to any person by reason of any use of the data. These data are being furnished to the recipient under a Government provided data. The recipient may not transfer these data to others without also transferring the Disclaimer. The information depicted on the map represents the results of a survey conducted on or about the date shown. It is not to be considered as representing the general condition existing at that time.

U.S. ARMY CORPS OF ENGINEERS  
NEW ORLEANS DISTRICT

Submitted:	Surveyed By: JUC & RCC	Plotted By: TSS
Recommended:	Checked by: MSK	
Approved:		

**MISSISSIPPI RIVER - B.R. TO GULF  
 SOUTHWEST PASS - SHEET 7  
 SW\_07\_SWP\_20210601\_CS  
 01 June 2021**

**Sheet Reference Number  
 7 of 13**

Revision Number:  
4.1-20191105