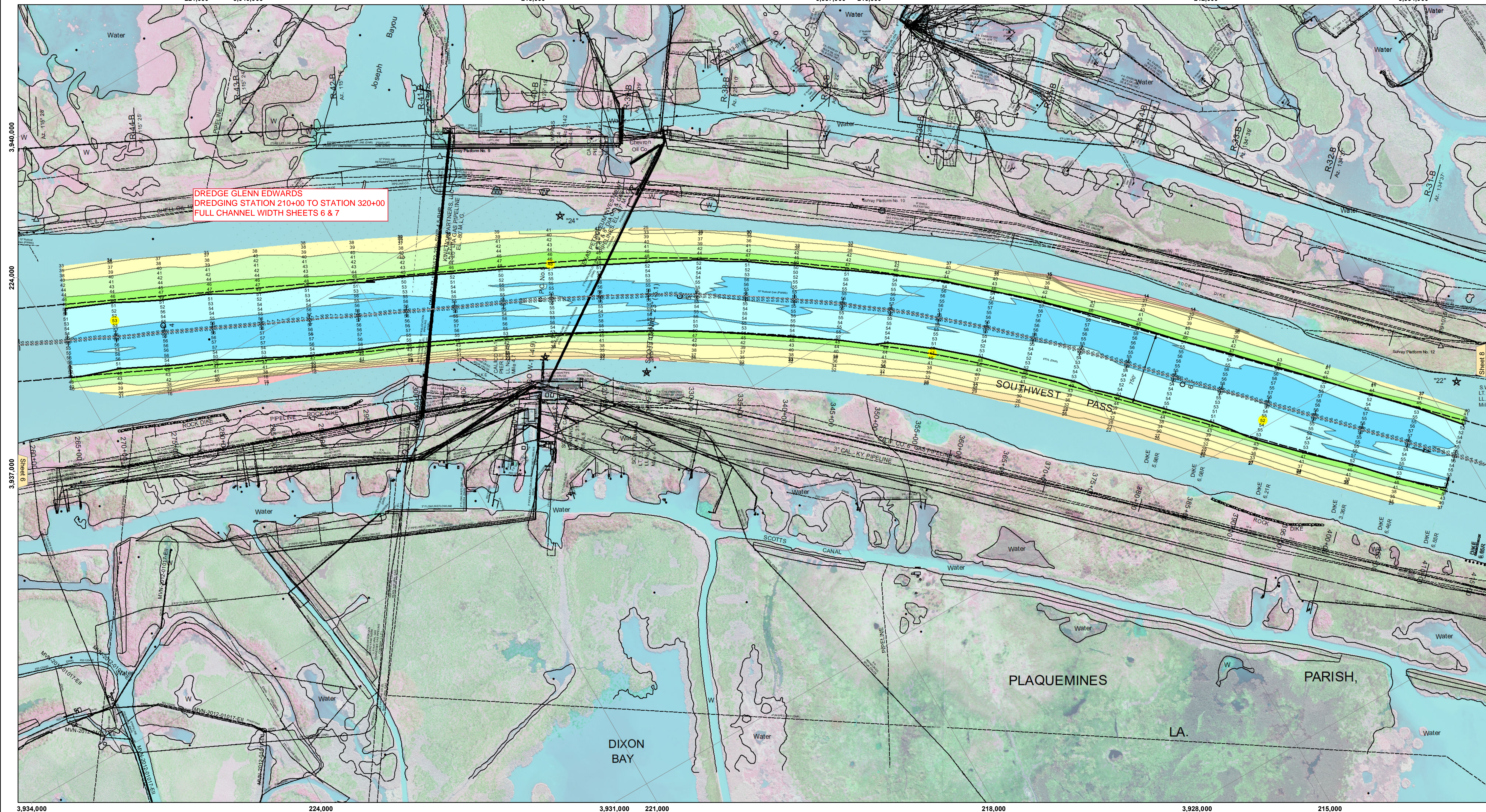


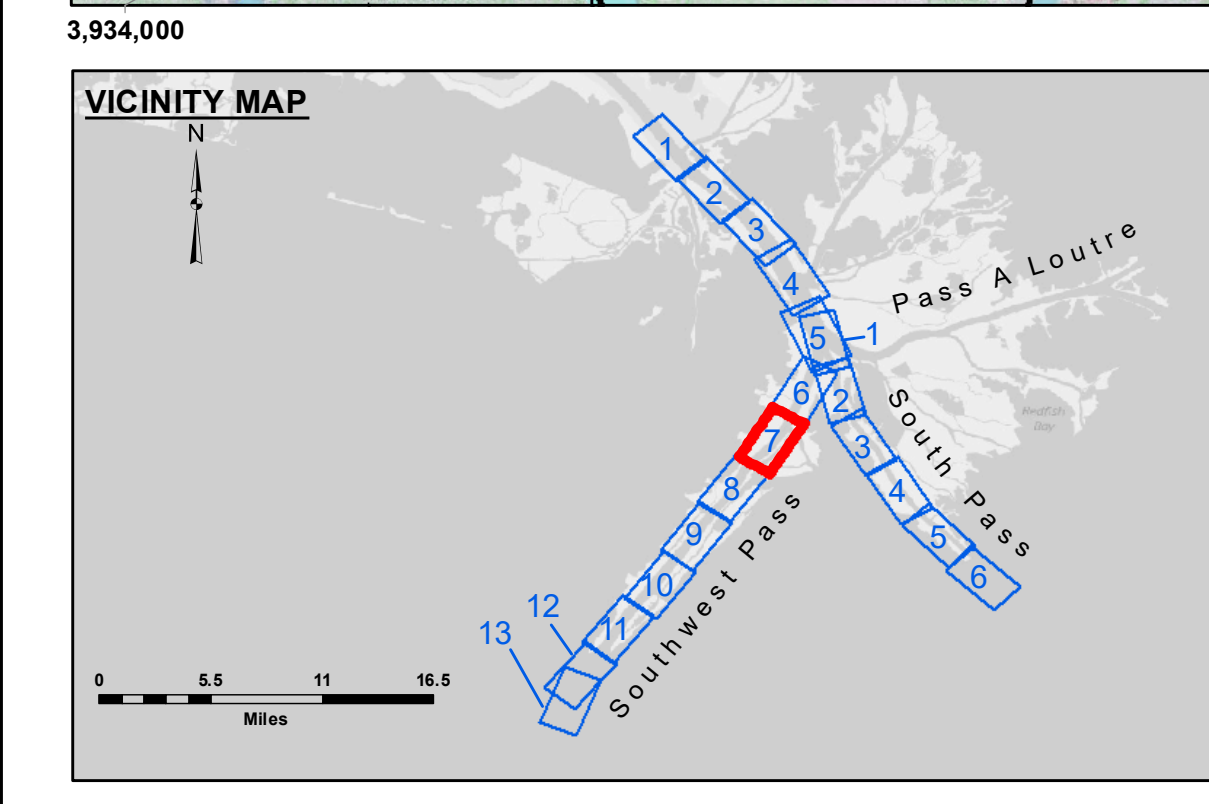
221,000 3,940,000 218,000 3,937,000 215,000 212,000 3,934,000

DREDGE GLENN EDWARDS
DREDGING STATION 210+00 TO STATION 320+00
FULL CHANNEL WIDTH SHEETS 6 & 7



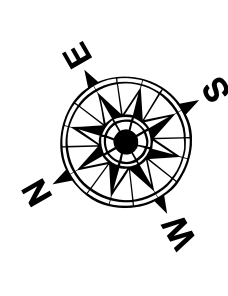
Sheet 6

Sheet 6

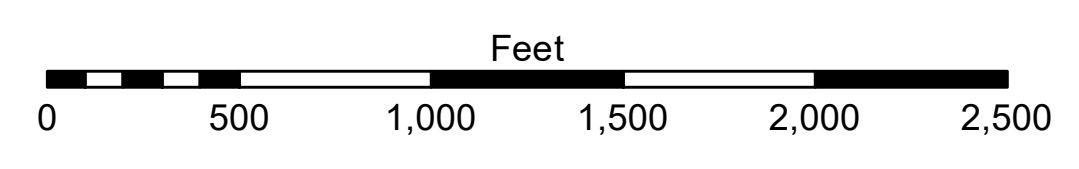


LEGEND

--- Federal Navigation Channel	● Cable Area	□ Borrow Area	■ -10' and above
— Federal Navigation Center Line	□ Placement Area	● Shoalest Sounding**	■ -10' to -20'
— As-built Pipeline/Cable	□ Anchorage Area	★ Beacon, General	■ -20' to -30'
..... Unconfirmed Pipeline/Cable	⊗ Obstruction Point	◆ Red Navigation Buoy	■ -30' to -40'
— Project Depth Contour	★ Wrecks-Submerged	◆ Green Navigation Buoy	■ -40' to -45'
			■ -45' to -50'
			■ -50' to -55'
			■ -55' and below



Gage Reading: 1.5 MLLW @ HEAD OF PASSES @ 1010
 Sea Conditions: CALM, FLUFF
 Vessel Name: BEAUVAIS
 Survey Type: CONDITION, SB
 Sounding Frequency***: LOW



NOTES:
 Horizontal Coordinate System: North American Datum of 1983 (NAD83), projected to the State Plane Coordinate System (SPCS), Louisiana South Zone. Distance units in U.S. Survey Feet.
 Vertical Datum: Soundings are shown in feet and indicate depths below Mean Lower Low Water (MLLW, 12-16). Datum Relationships for gage 01545 as of March 2020: 0.0' NAVD86, 2009.55 = -0.32' MLLW = 3.18' MLG
 Distances on the Mississippi River, above and below Head of Passes are shown at 1 mile intervals.
 The location of navigation aids are base on and provided by the U.S. Coast Guard.
 2016 Aerial Photography data source: Precision Aerial Reconnaissance, LLC (1998 DOQQ in green)
 Reference is N.O.A. Navigation Chart No. 11361.
 ** Shoalest Sounding per Quarter per Reach.
 *** High frequency (200 kHz) survey data represents the first signal return at a sounding location and will include suspended solids, known as "fluff", if present. Low frequency (24 kHz) survey data normally penetrates through this "fluff" layer to depict elevations of consolidated bottom material. Low frequency accuracies may vary depending on channel conditions and fathometer settings.



DISCLAIMER:
 The United States Government furnishes these data and the recipient accepts and uses them with the express understanding that the data are not warranted for accuracy, completeness, reliability, usability or suitability for any particular purpose of the user. The user is responsible for the results of the use of the data. The user shall not be held liable for any damage or injury, under no liability whatsoever to any person by reason of any use of the data. These data are being made available to the public under the provisions of the Government provided data. The recipient may not transfer these data to others without also transferring the Disclaimer. The information depicted on the map represents the results of a survey conducted on the date shown. It is not intended to be used for any purpose other than that for which it was prepared. The information is provided as a service and is not to be considered as a warranty or guarantee of any kind. The Corps of Engineers does not assume any liability for any damage or injury, under no liability whatsoever to any person by reason of any use of the data. The user shall not be held liable for any damage or injury, under no liability whatsoever to any person by reason of any use of the data. These data are being made available to the public under the provisions of the Government provided data. The recipient may not transfer these data to others without also transferring the Disclaimer.

U.S. ARMY CORPS OF ENGINEERS
NEW ORLEANS DISTRICT

Submitted:	Surveyed By:	Checked By:
Recommended:	JIC & MGF	MSK
Approved:	Plotted By:	
	TSS	

**MISSISSIPPI RIVER - B. R. TO GULF
 SOUTHWEST PASS - SHEET 7
 SW_07_SWP_20220525_CS
 25 May 2022**

**Sheet Reference Number
 7 of 13**

Revision Number: 4.2-20220429