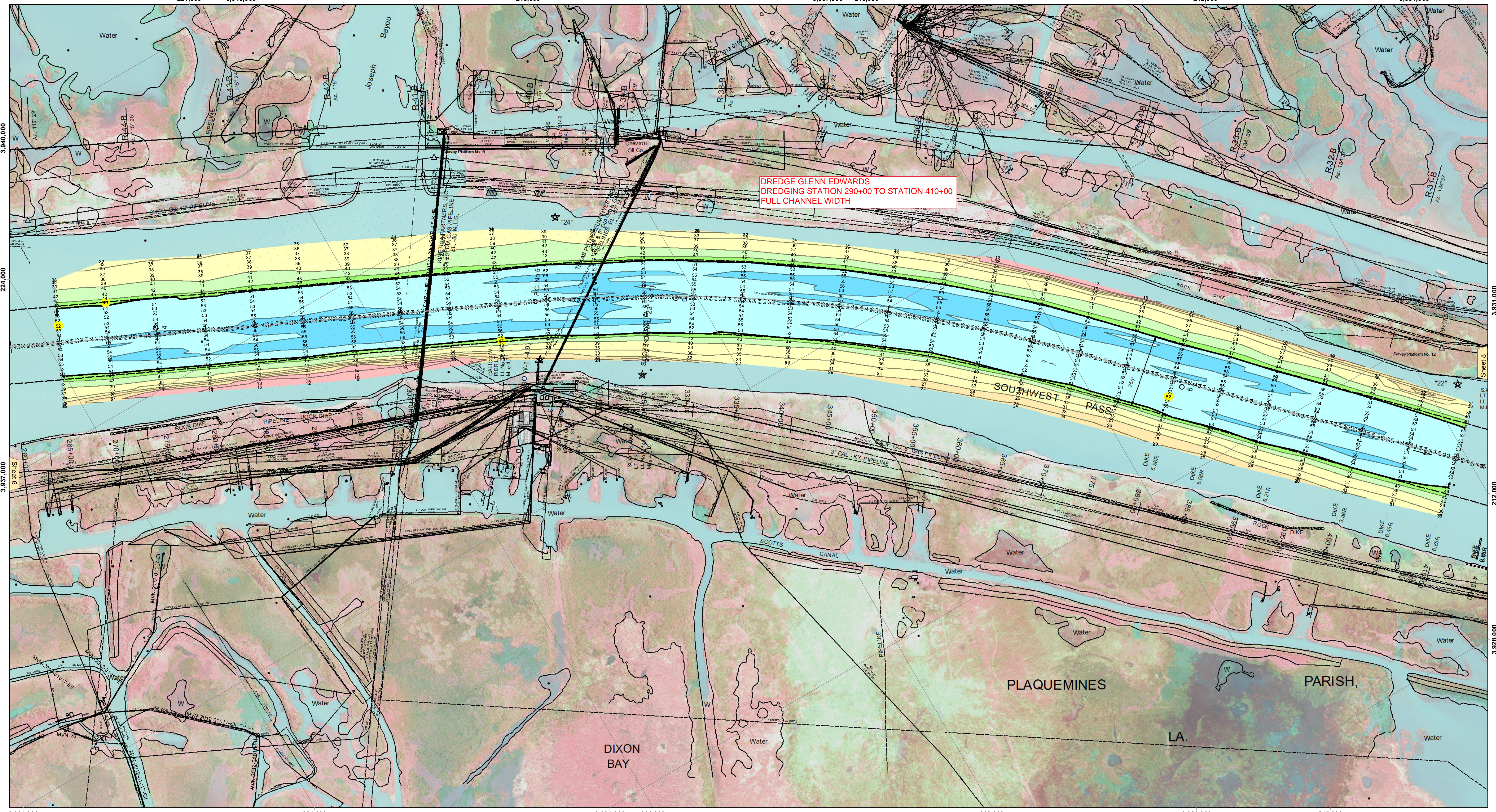


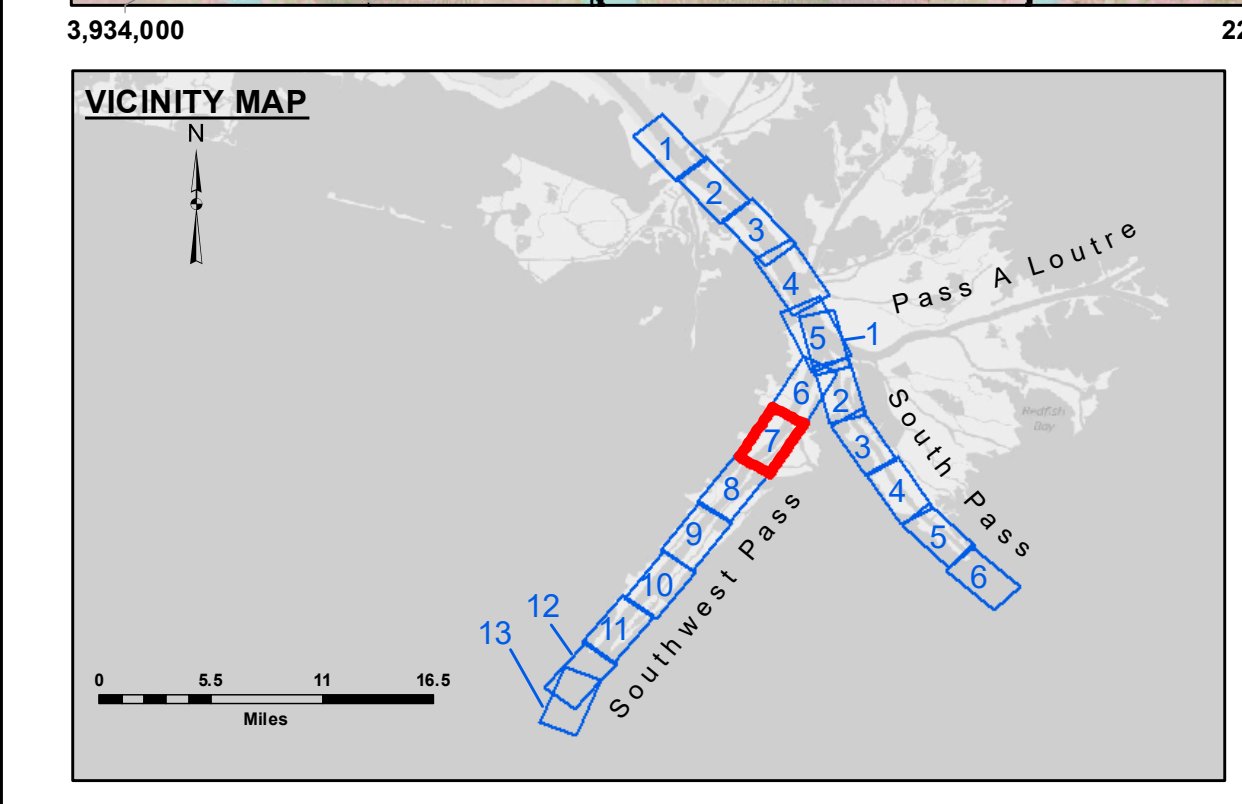
221,000 3,940,000 218,000 3,937,000 215,000 212,000 3,934,000



**DREDGE GLENN EDWARDS  
DREDGING STATION 290+00 TO STATION 410+00  
FULL CHANNEL WIDTH**

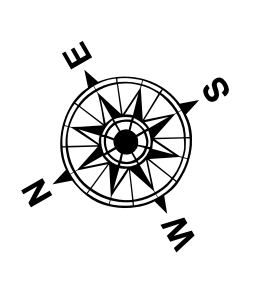
Sheet 6

Sheet 8

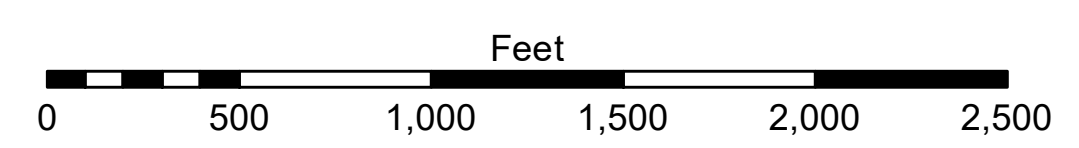


**LEGEND**

--- Federal Navigation Channel	● Cable Area	□ Borrow Area	■ -10' and above
— Federal Navigation Center Line	■ Placement Area	● Shoalest Sounding**	■ -10' to -20'
— As-built Pipeline/Cable	⊗ Anchorage Area	★ Beacon, General	■ -20' to -30'
..... Unconfirmed Pipeline/Cable	⊗ Obstruction Point	◆ Red Navigation Buoy	■ -30' to -40'
— Project Depth Contour	★ Wrecks-Submerged	◆ Green Navigation Buoy	■ -40' to -45'
			■ -45' to -50'
			■ -50' to -55'
			■ -55' and below



Gage Reading: 1.7 MLLW @ HEAD OF PASSES @ 1000  
Sea Conditions: CALM  
Vessel Name: TOBIN  
Survey Type: CONDITION, SB  
Sounding Frequency\*\*\*: LOW



**NOTES:**  
Horizontal Coordinate System: North American Datum of 1983 (NAD83), projected to the State Plane Coordinate System (SPCS), Louisiana South Zone. Distance units in U.S. Survey Feet.  
Vertical Datum: Soundings are shown in feet and indicate depths below Mean Lower Low Water (MLLW, 12-16). Datum Relationships for gage 01545 as of March 2020: 0.0' NAVD86, 2009.55 = -0.32' MLLW = 3.18' MLG  
Distances on the Mississippi River, above and below Head of Passes are shown at 1 mile intervals.  
The location of navigation aids are based on and provided by the U.S. Coast Guard.  
2022 Aerial Photography data source: Optimal GEO (1998 DOQQ in green)  
Reference is N.O.A. Navigation Chart No. 11361.  
\*\* Shoalest Sounding per Quarter per Reach.  
\*\*\* High frequency (200 kHz) survey data represents the first signal return at a sounding location and will include suspended solids, known as "fluff", if present. Low frequency (24 kHz) survey data normally penetrates through this "fluff" layer to depict elevations of consolidated bottom material. Low frequency accuracies may vary depending on channel conditions and fathometer settings.



**DISTRIBUTION LIABILITY:** The data represents the results of data collection/processing for a specific US Army Corps of Engineers project. It is only valid for its intended use, content, time and accuracy specifications. The user is responsible for the results of any use of this data. Approximation of the data for other than its intended purpose.  
Data Constants: Hydrographic survey data is subject to change rapidly due to several factors including but not limited to dredging operations, sedimentation, and channel changes. The user is responsible for the hydrographical conditions which develop after the date of the survey. Prudent mariners should not rely solely upon it.  
The information depicted on this map represents the results of a survey and is not intended to be used for navigation. It is provided for informational purposes only. The user is responsible for the results of any use of this data. Prudent mariners should not rely solely upon it.

**U.S. ARMY CORPS OF ENGINEERS  
NEW ORLEANS DISTRICT**

Submitted:	Surveyed By: JIC & MGF
Recommended:	Checked By: TSS
Approved:	Checked By: MSK

**MISSISSIPPI RIVER - B.R. TO GULF  
SOUTHWEST PASS - SHEET 7  
SW\_07\_SWP\_20230324\_CS  
24 March 2023**

**Sheet Reference Number  
7 of 13**