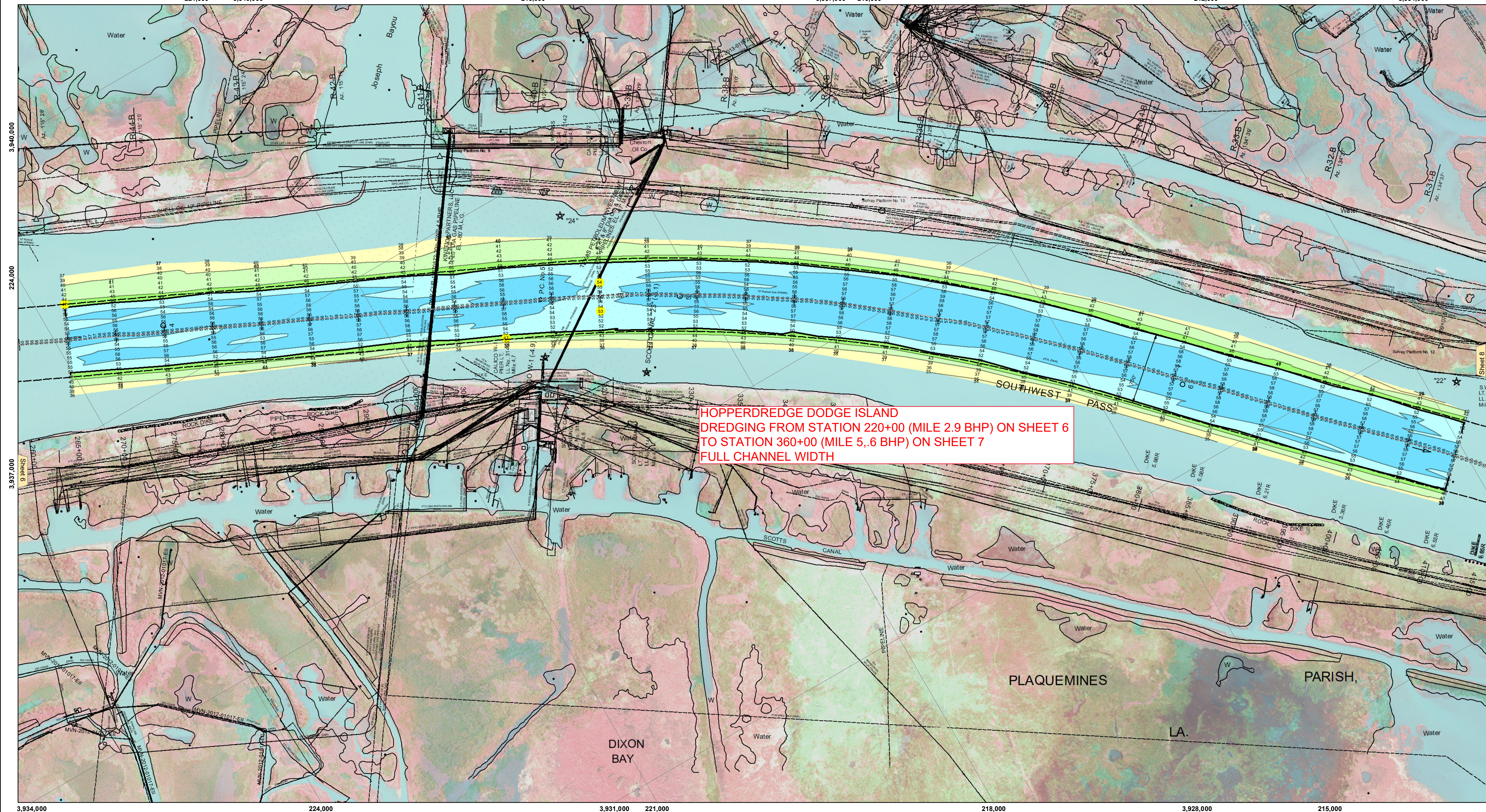


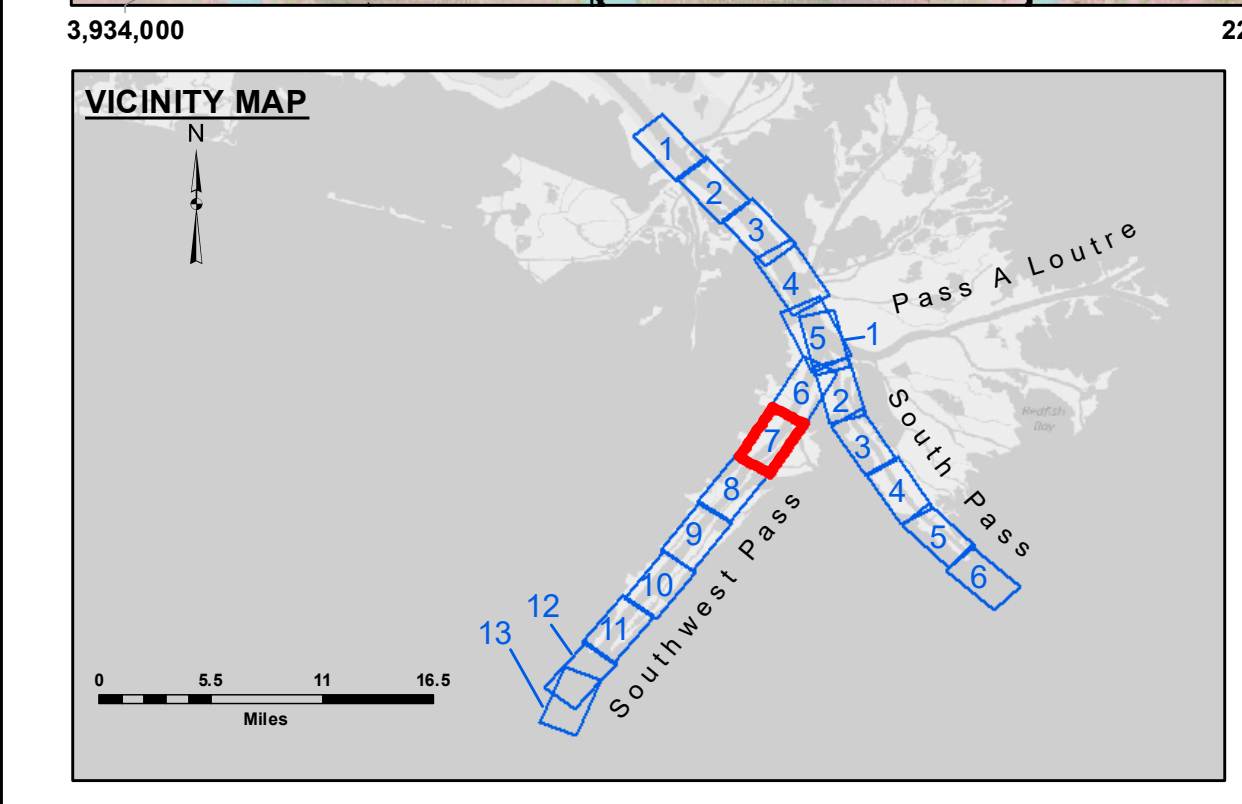
221,000 3,940,000 218,000 3,937,000 215,000 212,000 3,934,000



HOPPERDREDGE DODGE ISLAND  
DREDGING FROM STATION 220+00 (MILE 2.9 BHP) ON SHEET 6  
TO STATION 360+00 (MILE 5.6 BHP) ON SHEET 7  
FULL CHANNEL WIDTH

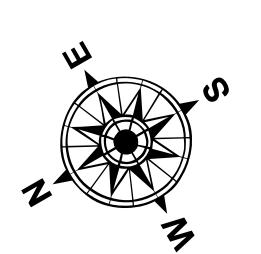
3,937,000  
Sheet 6

3,931,000  
Sheet 6

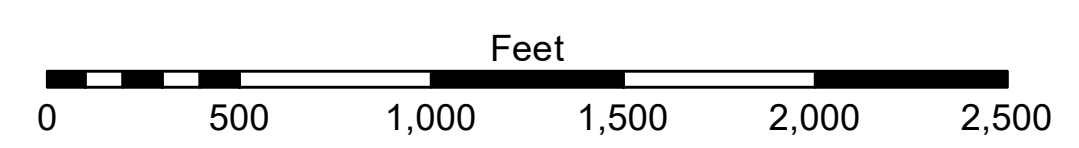


**LEGEND**

--- Federal Navigation Channel	● Cable Area	□ Borrow Area	■ -10' and above
— Federal Navigation Center Line	□ Placement Area	● Shoalest Sounding**	■ -10' to -20'
— As-built Pipeline/Cable	□ Anchorage Area	★ Beacon, General	■ -20' to -30'
..... Unconfirmed Pipeline/Cable	⊗ Obstruction Point	◆ Red Navigation Buoy	■ -30' to -40'
— Project Depth Contour	★ Wrecks-Submerged	◆ Green Navigation Buoy	■ -40' to -45'
			■ -45' to -50'
			■ -50' to -55'
			■ -55' and below



Gage Reading: 1.1 MLLW @ HEAD OF PASSES @ 0950  
 Sea Conditions: CALM  
 Vessel Name: BLANCHARD  
 Survey Type: CONDITION, SB  
 Sounding Frequency\*\*\*: LOW



**NOTES:**  
 Horizontal Coordinate System: North American Datum of 1983 (NAD83), projected to the State Plane Coordinate System (SPCS), Louisiana South Zone. Distance units in U.S. Survey Feet.  
 Vertical Datum: 0.0' NAVD88, 2009.55 = -0.32' MLLW = 3.18' MLG  
 Soundings are shown in feet and indicate depths below Mean Lower Low Water (MLLW, 12-16). Datum Relationships for gage 01545 as of March 2020:  
 0.0' NAVD88, 2009.55 = -0.32' MLLW = 3.18' MLG  
 Distances on the Mississippi River, above and below Head of Passes are shown at 1 mile intervals.  
 The location of navigation aids are base on and provided by the U.S. Coast Guard.  
 2022 Aerial Photography data source: Optimal GEO (1998 DOQQ in green)  
 Reference is N.O.A. Navigation Chart No. 11361.  
 \*\* Shoalest Sounding per Quarter per Reach.  
 \*\*\* High frequency (200 kHz) survey data represents the first signal return at a sounding location and will include suspended solids, known as "fluff", if present. Low frequency (24 kHz) survey data normally penetrates through this "fluff" layer to depict elevations of consolidated bottom material. Low frequency accuracies may vary depending on channel conditions and fathometer settings.



**DISCLAIMER:** The United States Government furnishes these data and the recipient accepts and uses them with the express understanding that the United States Government makes no warranty, expressed or implied, concerning the accuracy, completeness, reliability, usability, or suitability for any particular purpose of the information furnished. The user is responsible for the results obtained from the use of this information. The user shall indemnify and hold the United States Government harmless from and against all claims, damages, and expenses, including reasonable attorneys' fees, that may be incurred by the United States Government as a result of the use of this information. The information depicted on this map represents the results of a survey conducted on or about the date shown on the map. The information is not intended to be used for any purpose other than that for which it was collected. The user shall be responsible for any changes in the information depicted on this map. The user shall be responsible for any changes in the information depicted on this map. The user shall be responsible for any changes in the information depicted on this map.

U.S. ARMY CORPS OF ENGINEERS  
NEW ORLEANS DISTRICT

Submitted:	Surveyed By: JTB & DBD
Recommended:	Plotted By: TSS
Approved:	Checked By: MSK

MISSISSIPPI RIVER - B.R. TO GULF  
 SOUTHWEST PASS - SHEET 7  
 SW\_07\_SWP\_20230706\_CS  
 06 July 2023

Sheet Reference Number  
 7 of 13

Revision Number: 4.2-20230429