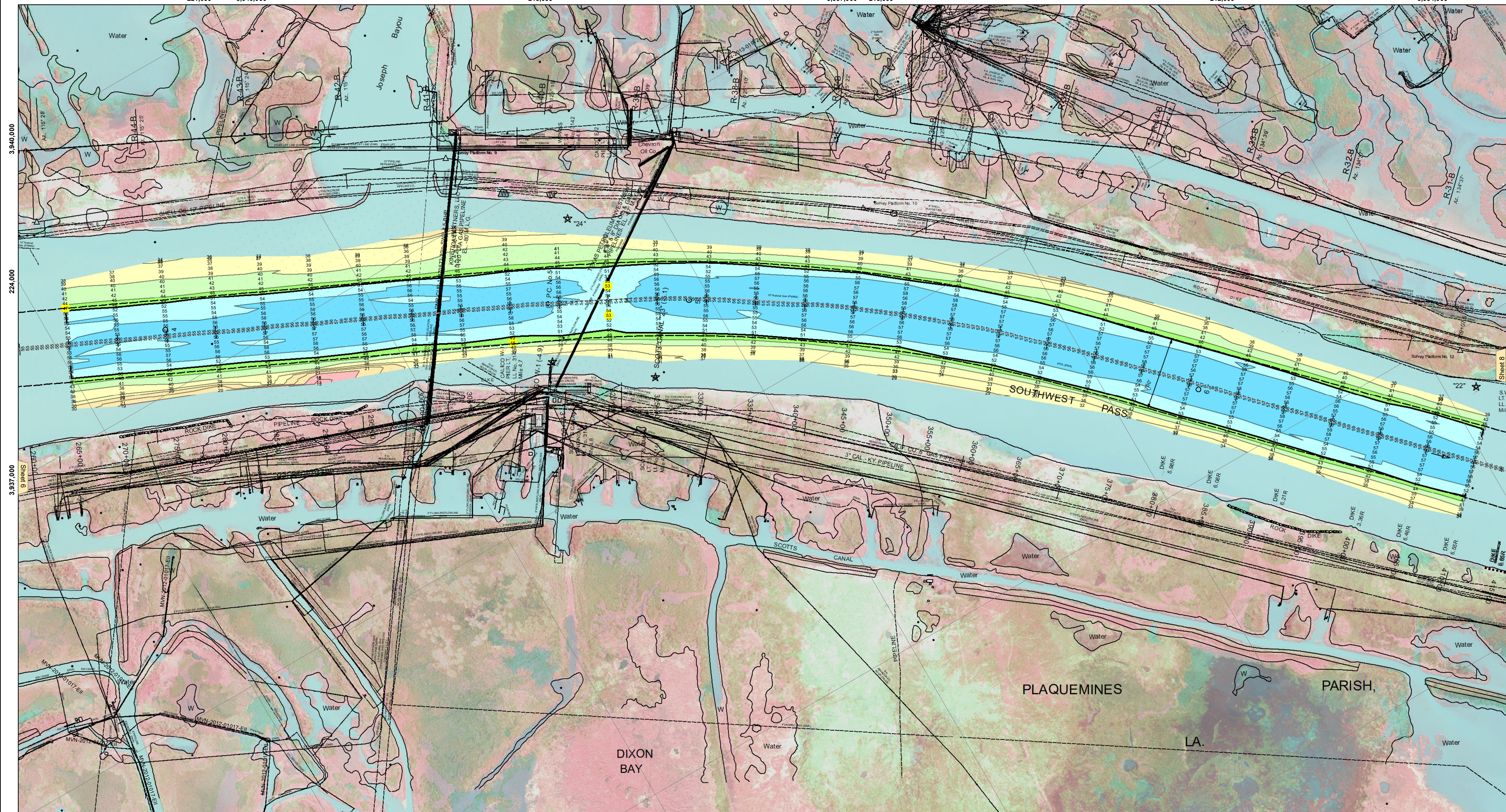
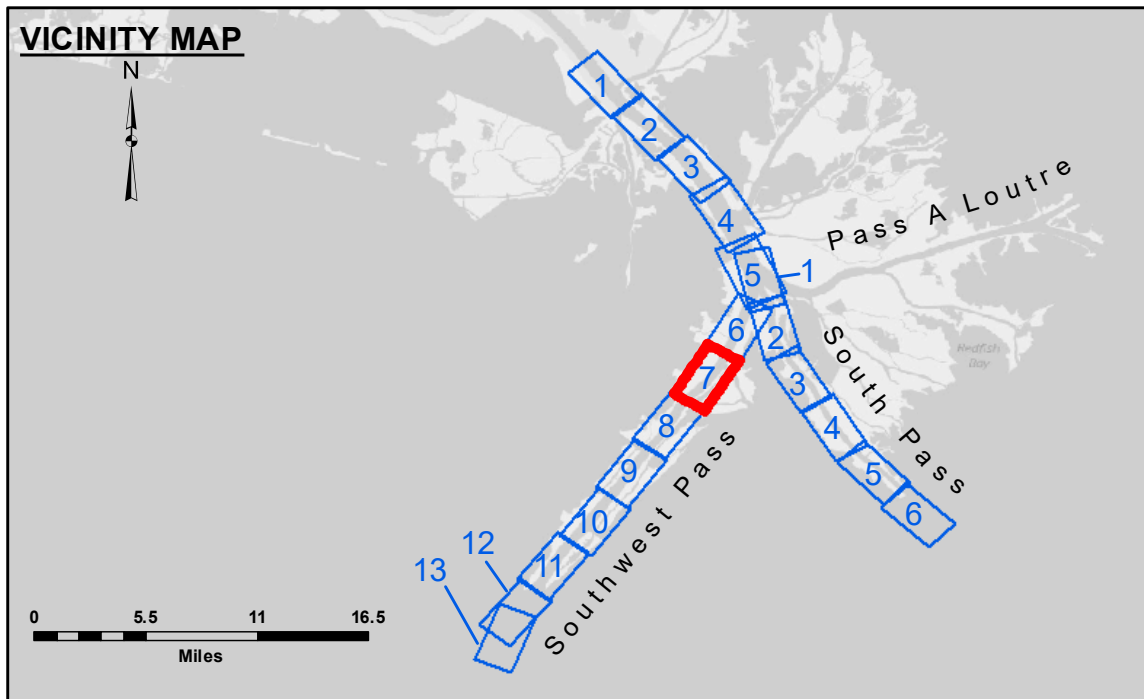


221,000 3,940,000 218,000 3,937,000 215,000 212,000 3,934,000

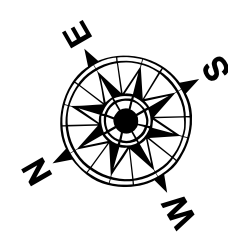


3,934,000 224,000 3,931,000 221,000 218,000 3,928,000 215,000

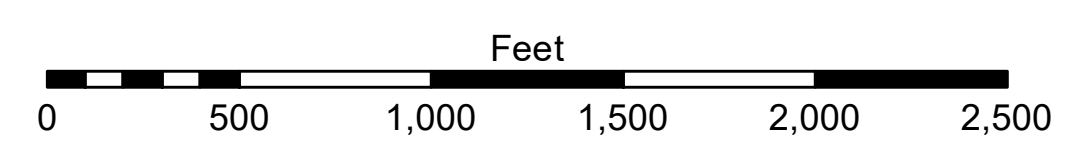


LEGEND

--- Federal Navigation Channel	● Cable Area	□ Borrow Area	■ -10' and above
— Federal Navigation Center Line	□ Placement Area	● Shoalest Sounding**	■ -10' to -20'
— As-built Pipeline/Cable	□ Anchorage Area	★ Beacon, General	■ -20' to -30'
..... Unconfirmed Pipeline/Cable	⊗ Obstruction Point	◆ Red Navigation Buoy	■ -30' to -40'
— Project Depth Contour	★ Wrecks-Submerged	◆ Green Navigation Buoy	■ -40' to -45'
			■ -45' to -50'
			■ -50' to -55'
			■ -55' and below



Gage Reading: 0.2 MLLW @ HEAD OF PASSES @ 0930
 Sea Conditions: CALM
 Vessel Name: BEAUVAIS
 Survey Type: CONDITION, SB
 Sounding Frequency***: LOW



NOTES:
 Horizontal Coordinate System: North American Datum of 1983 (NAD83), projected to the State Plane Coordinate System (SPCS), Louisiana South Zone. Distance units in U.S. Survey Feet.
 Vertical Datum: Soundings are shown in feet and indicate depths below Mean Lower Low Water (MLLW, 12-16). Datum Relationships for gage 01545 as of March 2020: 0.0' NAVD88, 2009.55 = -0.32' MLLW = 3.18' MLG
 Distances on the Mississippi River, above and below Head of Passes are shown at 1 mile intervals.
 The location of navigation aids are base on and provided by the U.S. Coast Guard.
 2022 Aerial Photography data source: Optimal GEO (1998 DOQQ in green)
 Reference is N.O.A. Navigation Chart No. 11361.
 ** Shoalest Sounding per Quarter per Reach.
 *** High frequency (200 kHz) survey data represents the first signal return at a sounding location and will include suspended solids, known as "fluff", if present. Low frequency (24 kHz) survey data normally penetrates through this "fluff" layer to depict elevations of consolidated bottom material. Low frequency accuracies may vary depending on channel conditions and fathometer settings.



DISTRIBUTION STATEMENT: This data represents the results of data collection-processing for a specific US Army Corps of Engineers project and is only valid for its intended use, content, time and accuracy specifications. The user is responsible for the results obtained from this data. Approximation of the data for other than intended purpose.
 Data Constants: Hydrographic survey data is subject to change rapidly due to several factors including but not limited to dredging operations, channel migration, and other factors. The user is responsible for the hydrographical conditions which develop after the date of the survey. The information depicted on this map represents the results of a survey conducted at the time the data was collected. It is not intended to represent the general condition existing at that time.

U.S. ARMY CORPS OF ENGINEERS
NEW ORLEANS DISTRICT

Submitted:	Surveyed By: LLB & MGF
Recommended:	Plotted By: TSS
Approved:	Checked By: MSK

**MISSISSIPPI RIVER - B.R. TO GULF
 SOUTHWEST PASS - SHEET 7
 SW_07_SWP_20230725_CS
 25 July 2023**

**Sheet Reference Number
 7 of 13**

Revision Number:
4.2-202 (04/20)