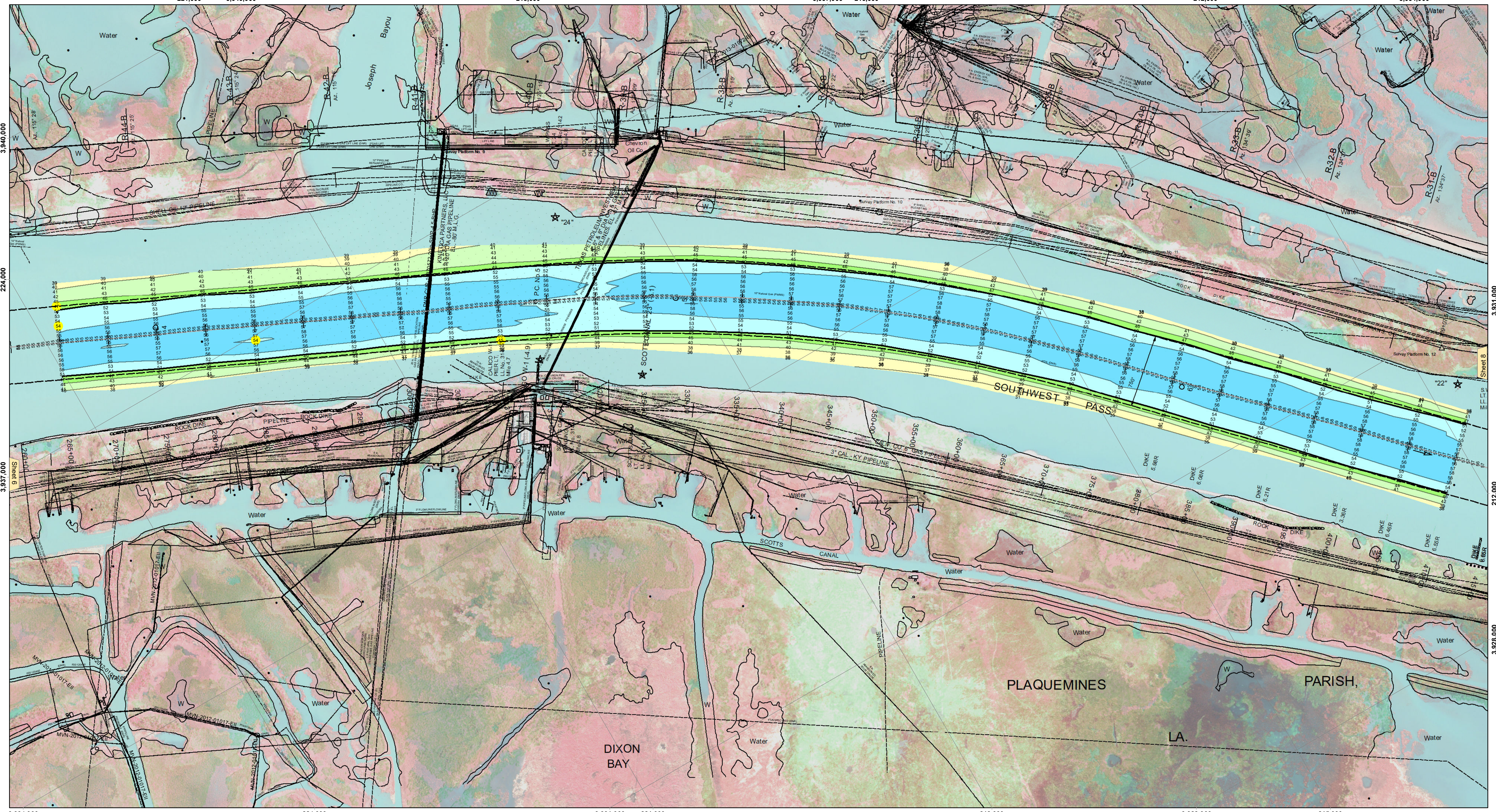
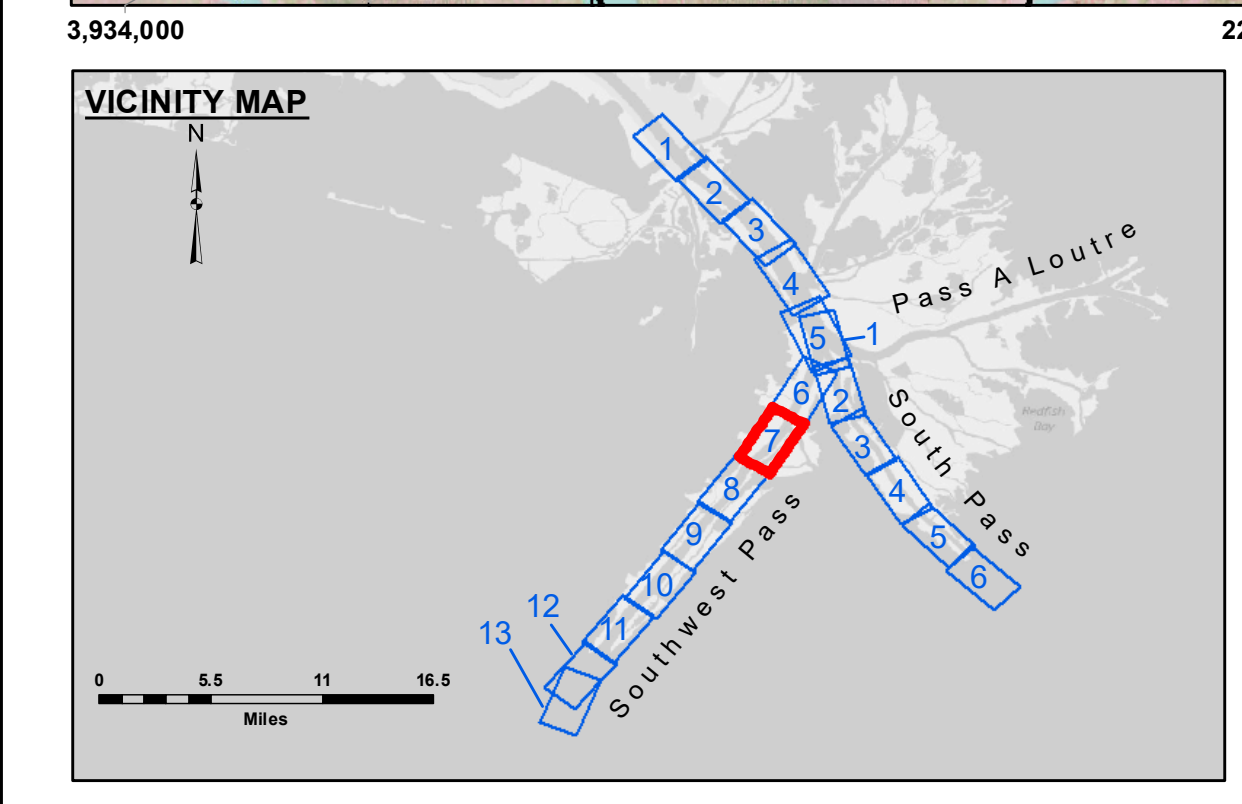


221,000 3,940,000 218,000 3,937,000 215,000 212,000 3,934,000



3,940,000 224,000 3,937,000 Sheet 6

3,931,000 Sheet 6



LEGEND

- Federal Navigation Channel
- Federal Navigation Center Line
- As-built Pipeline/Cable
- Unconfirmed Pipeline/Cable
- Project Depth Contour
- Cable Area
- Placement Area
- Anchorage Area
- Obstruction Point
- Wrecks-Submerged
- Borrow Area
- Shoalest Sounding**
- Beacon, General
- Red Navigation Buoy
- Green Navigation Buoy
- 10' and above
- 10' to -20'
- 20' to -30'
- 30' to -40'
- 40' to -45'
- 45' to -50'
- 50' to -55'
- 55' and below

NOTES:

Horizontal Coordinate System: North American Datum of 1983 (NAD83), projected to the State Plane Coordinate System (SPCS), Louisiana South Zone. Distance units in U.S. Survey Feet.

Vertical Datum: 0.6 MLLW @ HEAD OF PASSES @ 0840

Gage Reading: 0.6 MLLW @ HEAD OF PASSES @ 0840

Sea Conditions: CALM

Vessel Name: BLANCHARD

Survey Type: CONDITION, SB

Sounding Frequency***: LOW

Soundings are shown in feet and indicate depths below Mean Lower Low Water (MLLW, 12-16). Datum Relationships for gage 01545 as of March 2020: 0.0' NAVD88, 2009.55 = -0.32' MLLW = 3.18' MLG

Distances on the Mississippi River, above and below Head of Passes are shown at 1 mile intervals.

The location of navigation aids are base on and provided by the U.S. Coast Guard.

2022 Aerial Photography data source: Optimal GEO (1998 DOQQ in green)

Reference is N.O.A. Navigation Chart No. 11361.

** Shoalest Sounding per Quarter per Reach.

*** High frequency (200 kHz) survey data represents the first signal return at a sounding location and will include suspended solids, known as "fluff", if present. Low frequency (24 kHz) survey data normally penetrates through this "fluff" layer to depict elevations of consolidated bottom material. Low frequency accuracies may vary depending on channel conditions and fathometer settings.



DISCLAIMER

The United States Government furnishes these data and the recipient accepts and uses them with the express understanding that the data are not warranted for any purpose other than that for which they were prepared, or implied concerning the accuracy, completeness, reliability, usability, or availability for any particular purpose of the recipient. The user is responsible for the results of any use of the data under no liability whatsoever to any person by reason of any use of the data. These data are being furnished to you for your information and are not to be used for any purpose other than that for which they were prepared. The recipient may not transfer these data to others without also transferring this Disclaimer. The information depicted on the map represents the results of a survey conducted by the Corps of Engineers and is not to be used for any purpose other than that for which it was prepared. The Corps of Engineers does not assume any liability for any errors or omissions in the data or for any damage or injury resulting from the use of the data.

U.S. ARMY CORPS OF ENGINEERS NEW ORLEANS DISTRICT		
Submitted:	Surveyed By:	Checked By:
Recommended:	JTB & DBD	MSK
Approved:	Plotted By:	
	TSS	
	Chief, Survey Section	
	Chief, Waterways Maintenance Section	

**MISSISSIPPI RIVER - B.R. TO GULF
SOUTHWEST PASS - SHEET 7
SW_07_SWP_20231107_CS
07 November 2023**

**Sheet Reference Number
7 of 13**

Revision Number: 4.2-20230420