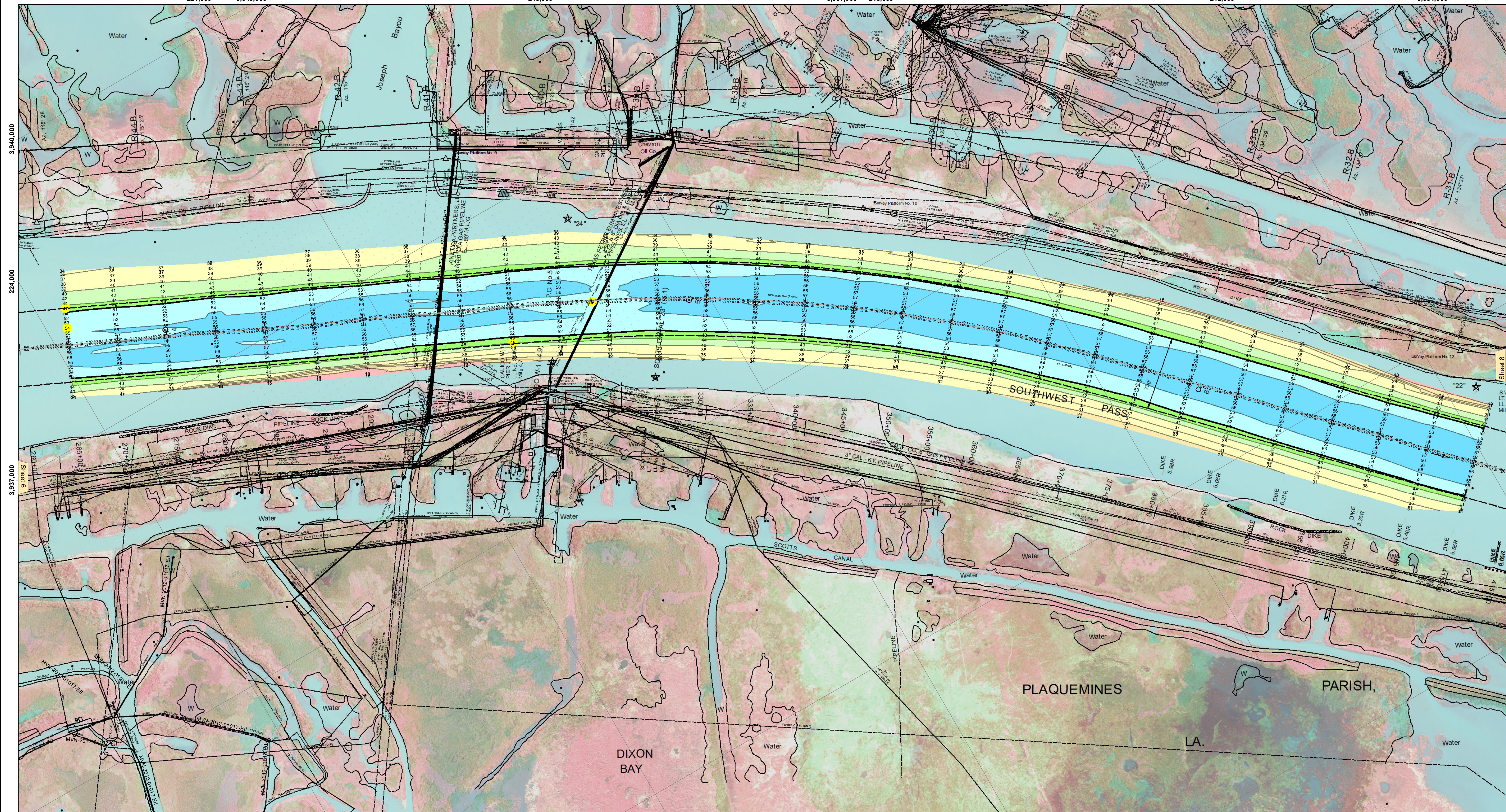
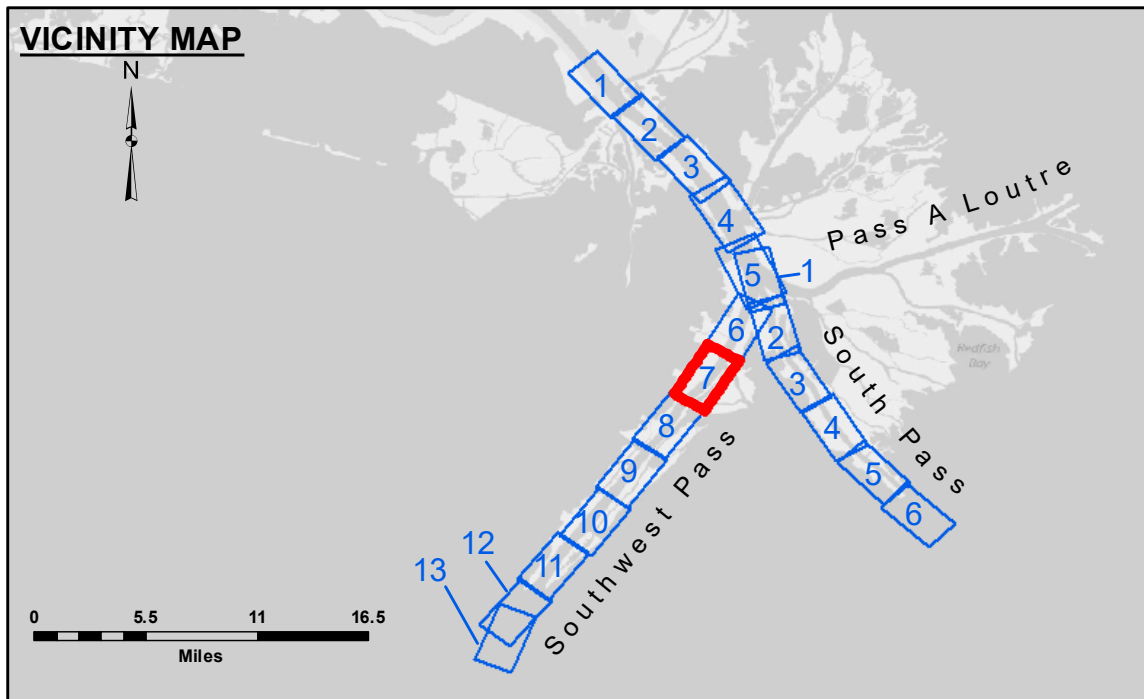


221,000 3,940,000 218,000 3,937,000 215,000 212,000 3,934,000

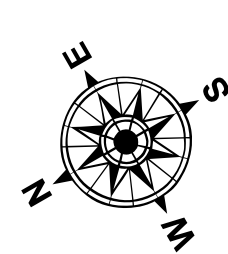


3,934,000 224,000 3,931,000 221,000 218,000 3,928,000 215,000

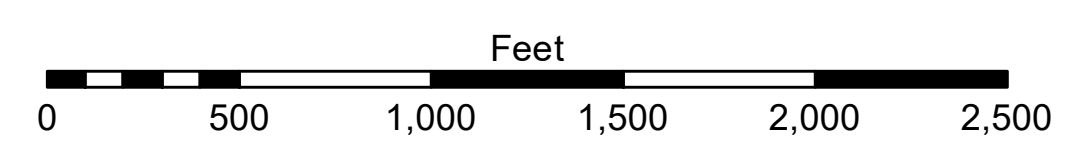


LEGEND

--- Federal Navigation Channel	● Cable Area	□ Borrow Area	■ -10' and above
— Federal Navigation Center Line	□ Placement Area	● Shoalest Sounding**	■ -10' to -20'
— As-built Pipeline/Cable	□ Anchorage Area	★ Beacon, General	■ -20' to -30'
..... Unconfirmed Pipeline/Cable	⊗ Obstruction Point	◆ Red Navigation Buoy	■ -30' to -40'
— Project Depth Contour	★ Wrecks-Submerged	◆ Green Navigation Buoy	■ -40' to -45'
			■ -45' to -50'
			■ -50' to -55'
			■ -55' and below



Gage Reading: 0.2 MLLW @ HEAD OF PASSES @ 0840
 Sea Conditions: CALM
 Vessel Name: BLANCHARD
 Survey Type: CONDITION, SB
 Sounding Frequency***: LOW



NOTES:
 Horizontal Coordinate System: North American Datum of 1983 (NAD83), projected to the State Plane Coordinate System (SPCS), Louisiana South Zone. Distance units in U.S. Survey Feet.
 Vertical Datum: Soundings are shown in feet and indicate depths below Mean Lower Low Water (MLLW, 12-16). Datum Relationships for gage 01545 as of March 2020: 0.0' NAVD88, 2009.55 = -0.32' MLLW = 3.18' MLG
 Distances on the Mississippi River, above and below Head of Passes are shown at 1 mile intervals.
 The location of navigation aids are base on and provided by the U.S. Coast Guard.
 2022 Aerial Photography data source: Optimal GEO (1998 DOQQ in green)
 Reference is N.O.A. Navigation Chart No. 11361.
 ** Shoalest Sounding per Quarter per Reach.
 *** High frequency (200 kHz) survey data represents the first signal return at a sounding location and will include suspended solids, known as "fluff", if present. Low frequency (24 kHz) survey data normally penetrates through this "fluff" layer to depict elevations of consolidated bottom material. Low frequency accuracies may vary depending on channel conditions and fathometer settings.



DISCLAIMER: The United States Government furnishes these data and the recipient accepts and uses them with the express understanding that the data are not to be used for any purpose other than that for which they were prepared, or implied concerning the accuracy, completeness, reliability, or suitability for any particular purpose of the recipient. The user is responsible for the results obtained from the use of these data. The user shall indemnify and hold the United States Government harmless from all claims, damages, and expenses, including reasonable attorneys' fees, that may be asserted against the United States Government by any third party as a result of the use of these data. The United States Government does not warrant the accuracy, completeness, or reliability of these data. The United States Government does not assume any liability for the use of these data for purposes not intended by the United States Government. The recipient may not transfer these data to others without also transferring this disclaimer. The information depicted on the map represents the results of a survey conducted on or about the date shown on the map. The information is not to be used for any purpose other than that for which it was prepared. The recipient shall indemnify and hold the United States Government harmless from all claims, damages, and expenses, including reasonable attorneys' fees, that may be asserted against the United States Government by any third party as a result of the use of these data.

**U.S. ARMY CORPS OF ENGINEERS
NEW ORLEANS DISTRICT**

Submitted:	Surveyed By: JTB & MJF
Recommended: Chief, Survey Section	Plotted By: TSS
Approved: Chief, Waterways Maintenance Section	Checked By: MSK

**MISSISSIPPI RIVER - B.R. TO GULF
SOUTHWEST PASS - SHEET 7
SW_07_SWP_20231221_CS
21 December 2023**

**Sheet Reference Number
7 of 13**

Revision Number:
4.2-202 (04/20)