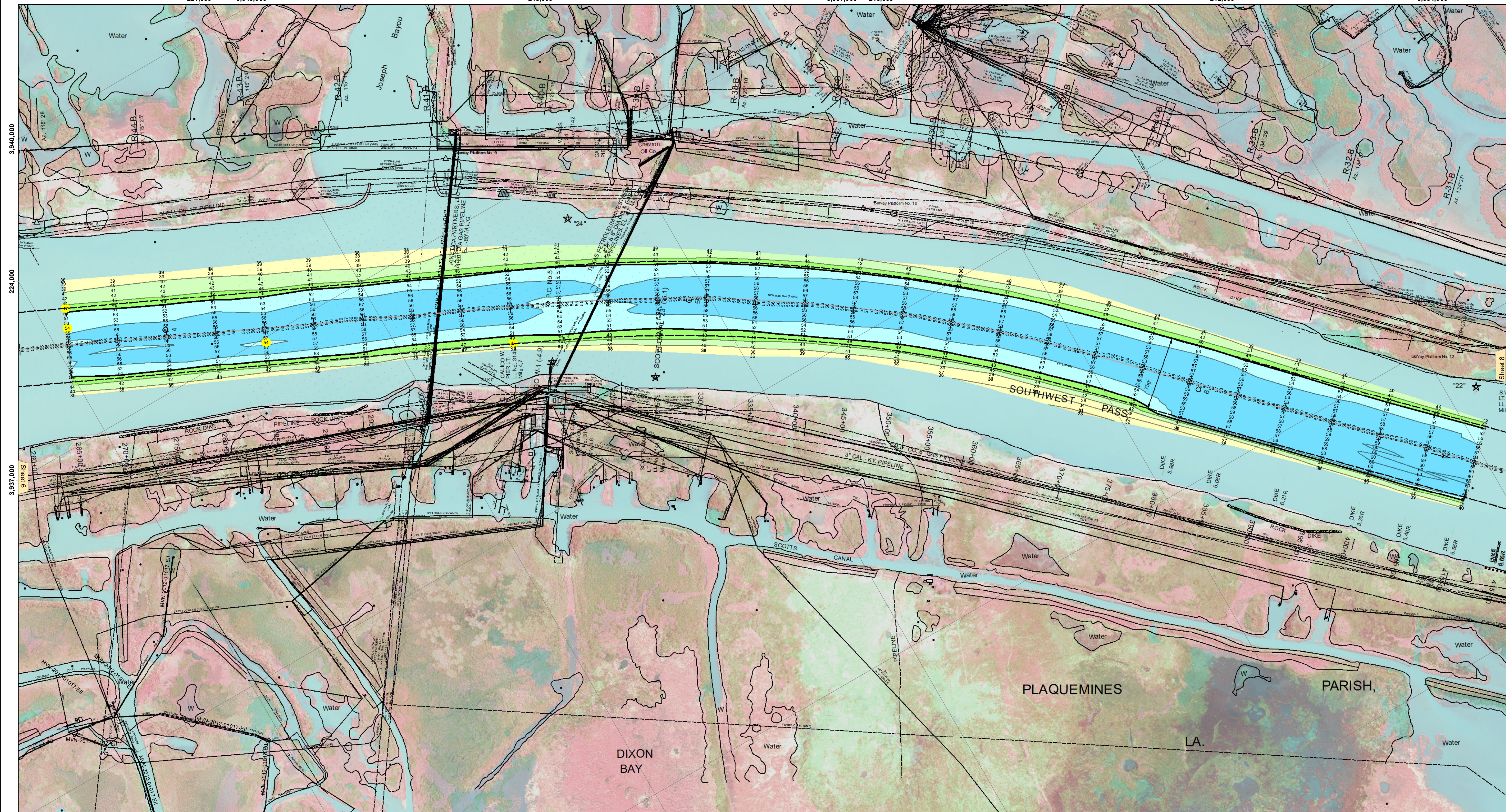
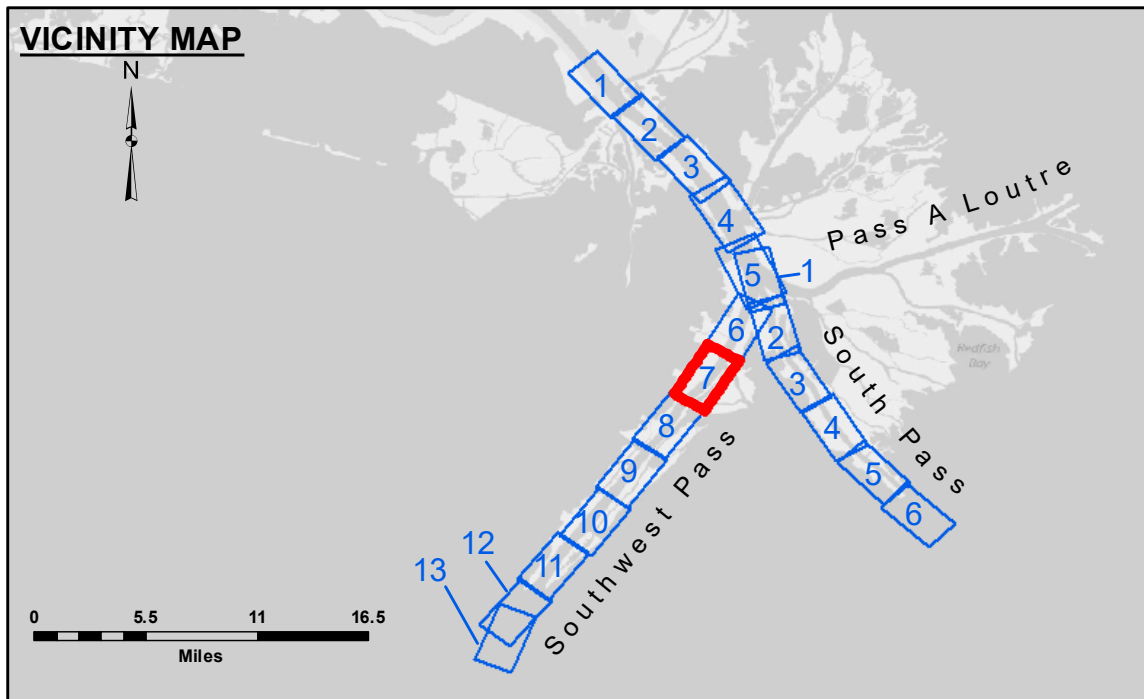


221,000 3,940,000 218,000 3,937,000 215,000 212,000 3,934,000

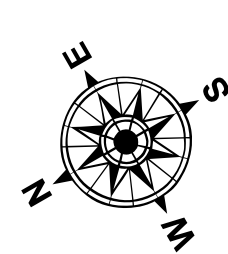


3,934,000 224,000 3,931,000 221,000 218,000 3,928,000 215,000

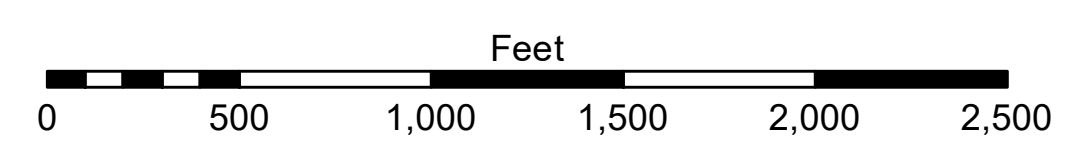


LEGEND

--- Federal Navigation Channel	● Cable Area	□ Borrow Area	■ -10' and above
— Federal Navigation Center Line	□ Placement Area	● Shoalest Sounding**	■ -10' to -20'
— As-built Pipeline/Cable	□ Anchorage Area	★ Beacon, General	■ -20' to -30'
..... Unconfirmed Pipeline/Cable	⊗ Obstruction Point	◆ Red Navigation Buoy	■ -30' to -40'
— Project Depth Contour	★ Wrecks-Submerged	◆ Green Navigation Buoy	■ -40' to -45'
			■ -45' to -50'
			■ -50' to -55'
			■ -55' and below



Gage Reading: -0.1 MLLW @ HEAD OF PASSES @ 0030
 Sea Conditions: CALM
 Vessel Name: BLANCHARD
 Survey Type: CONDITION, SB
 Sounding Frequency***: LOW



NOTES:
 Horizontal Coordinate System: North American Datum of 1983 (NAD83), projected to the State Plane Coordinate System (SPCS), Louisiana South Zone. Distance units in U.S. Survey Feet.
 Vertical Datum: Soundings are shown in feet and indicate depths below Mean Lower Low Water (MLLW, 12-16). Datum Relationships for gage 01545 as of March 2020: 0.0' NAVD88, 2009.55 = -0.32' MLLW = 3.18' MLG
 Distances on the Mississippi River, above and below Head of Passes are shown at 1 mile intervals.
 The location of navigation aids are base on and provided by the U.S. Coast Guard.
 2022 Aerial Photography data source: Optimal GEO (1998 DOQQ in green)
 Reference is N.O.A. Navigation Chart No. 11361.
 ** Shoalest Sounding per Quarter per Reach.
 *** High frequency (200 kHz) survey data represents the first signal return at a sounding location and will include suspended solids, known as "fluff", if present. Low frequency (24 kHz) survey data normally penetrates through this "fluff" layer to depict elevations of consolidated bottom material. Low frequency accuracies may vary depending on channel conditions and fathometer settings.



DISCLAIMER: The United States Government furnishes these data and the recipient accepts and uses them with the express understanding that the data are not warranted for any purpose other than that for which they were prepared, or implied concerning the accuracy, completeness, reliability, or suitability for any particular purpose of the recipient. The user is responsible for the results obtained from the use of these data. The user shall indemnify and hold the United States Government harmless from and against all claims, damages, losses, and expenses, including reasonable attorneys' fees, that may be incurred by the United States Government as a result of the use of these data for any purpose other than that for which they were prepared. The information depicted on the map represents the results of a survey conducted on or about the date of the survey. The information is not intended to represent the general condition existing at that time.

U.S. ARMY CORPS OF ENGINEERS
NEW ORLEANS DISTRICT

Submitted:	Surveyed By: JTB & DBD
Recommended: Chief, Survey Section	Plotted By: TSS
Approved: Chief, Waterways Maintenance Section	Checked By: MSK

**MISSISSIPPI RIVER - B.R. TO GULF
 SOUTHWEST PASS - SHEET 7
 SW_07_SWP_20240208_CS
 08 February 2024**

**Sheet Reference Number
 7 of 13**

Revision Number:
4.2-202 (04/20)