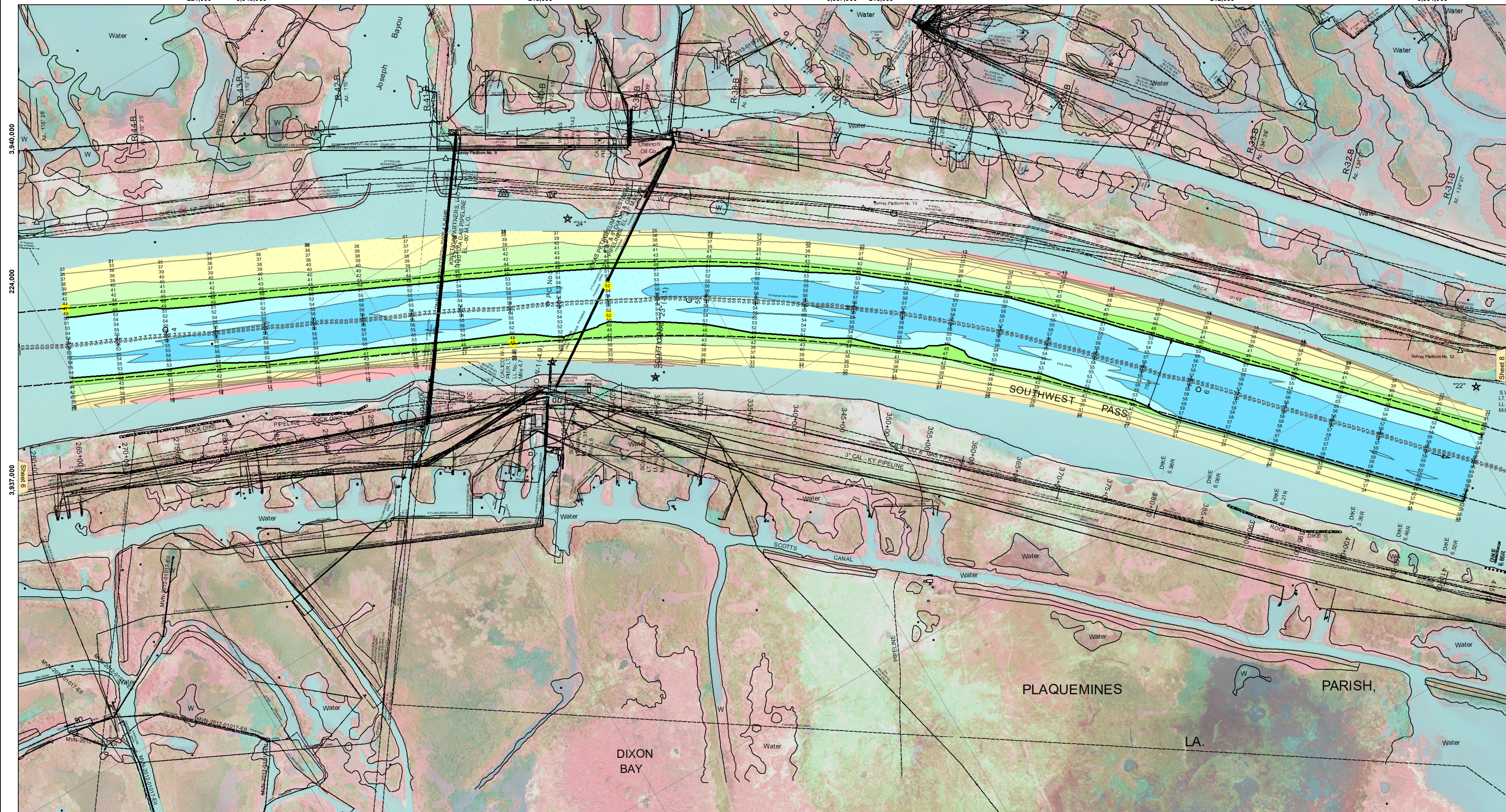


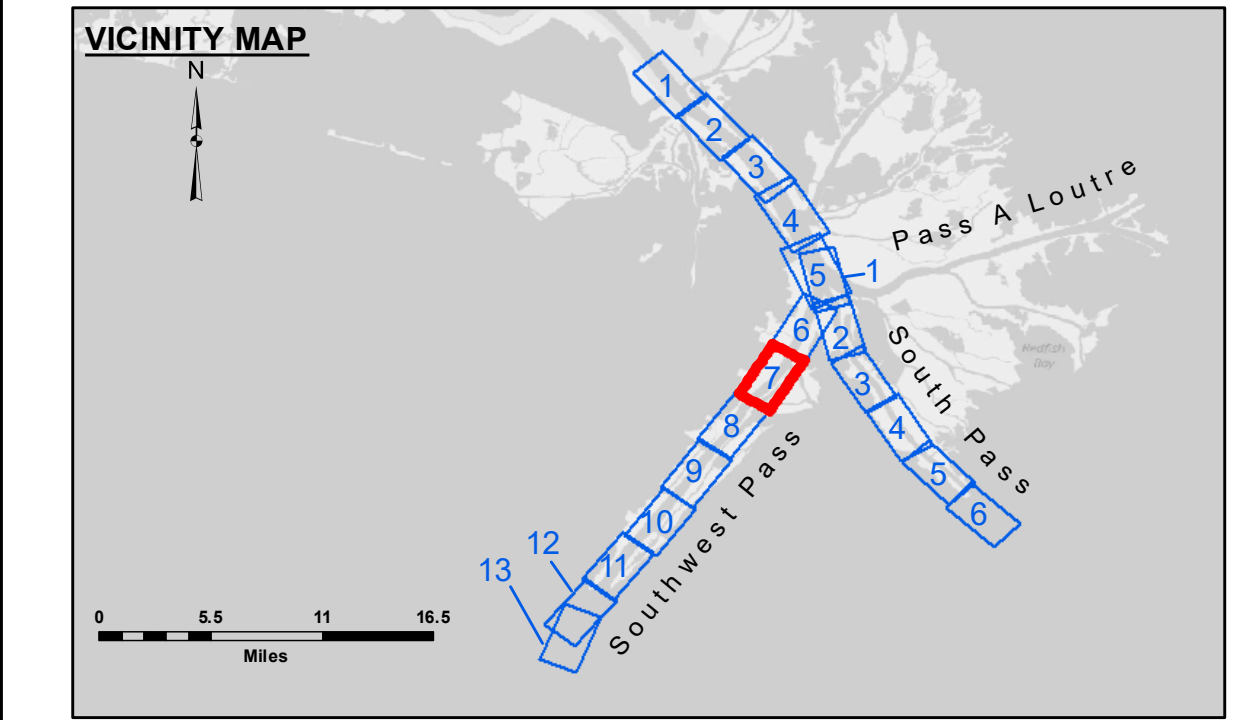
221,000 3,940,000 218,000 3,937,000 215,000 212,000 3,934,000



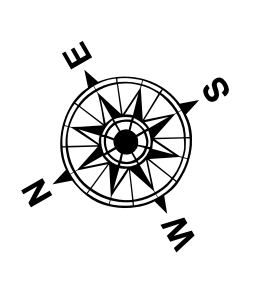
Sheet 6

Sheet 8

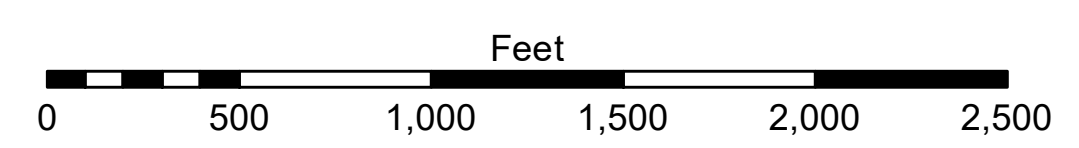
3,934,000 224,000 3,931,000 221,000 218,000 3,928,000 215,000



| LEGEND | | | |
|----------------------------------|---------------------|-------------------------|------------------|
| --- Federal Navigation Channel | ● Cable Area | ■ Borrow Area | ■ -10' and above |
| — Federal Navigation Center Line | ■ Placement Area | ● Shoalest Sounding** | ■ -10' to -20' |
| — As-built Pipeline/Cable | ■ Anchorage Area | ★ Beacon, General | ■ -20' to -30' |
| Unconfirmed Pipeline/Cable | ⊗ Obstruction Point | ◆ Red Navigation Buoy | ■ -30' to -40' |
| — Project Depth Contour | ⚓ Wrecks-Submerged | ◆ Green Navigation Buoy | ■ -40' to -45' |
| | | | ■ -45' to -50' |
| | | | ■ -50' to -55' |
| | | | ■ -55' and below |



Gage Reading: 1.3 MLLW @ HEAD OF PASSES @ 1050
 Sea Conditions: CALM, HEAVY FLUFF
 Vessel Name: TOBIN
 Survey Type: CONDITION, SB
 Sounding Frequency***: LOW



NOTES:
 Horizontal Coordinate System: North American Datum of 1983 (NAD83), projected to the State Plane Coordinate System (SPCS), Louisiana South Zone. Distance units in U.S. Survey Feet.
 Vertical Datum: Soundings are shown in feet and indicate depths below Mean Lower Low Water (MLLW, 12-16). Datum Relationships for gage 01545 as of March 2020: 0.0' NAVD86, 2009.55 = -0.32' MLLW = 3.18' MLG
 Distances on the Mississippi River, above and below Head of Passes are shown at 1 mile intervals.
 The location of navigation aids are base on and provided by the U.S. Coast Guard.
 2022 Aerial Photography data source: Optimal GEO (1998 DOQQ in green)
 Reference is N.O.A. Navigation Chart No. 11361.
 ** Shoalest Sounding per Quarter per Reach.
 *** High frequency (200 kHz) survey data represents the first signal return at a sounding location and will include suspended solids, known as "fluff", if present. Low frequency (24 kHz) survey data normally penetrates through this "fluff" layer to depict elevations of consolidated bottom material. Low frequency accuracies may vary depending on channel conditions and fathometer settings.



US Army Corps of Engineers District: CEMVN

DISTRIBUTION LIABILITY: The data represents the results of data collection/processing for a specific US Army Corps of Engineers project. It is not intended for general use and its use is limited to the specific project for which it was collected. The user is responsible for the accuracy, reliability, usability, or availability for any particular purpose of the information. Approximation of the data for other than intended purpose. Data Constants: Hydrographic survey data is subject to change rapidly due to several factors including but not limited to dredging operations, channel shifts, and changes in water levels. The user is responsible for the accuracy of the data for other than intended purpose. The information depicted on the map represents the results of a hydrographic survey and is not intended to be used for navigation. The information is provided for informational purposes only and does not constitute a warranty of any kind. The user is responsible for the accuracy, reliability, usability, or availability for any particular purpose of the information.

| U.S. ARMY CORPS OF ENGINEERS NEW ORLEANS DISTRICT | | |
|--|--------------------------------------|--------------------|
| Submitted: | Surveyed By: JUC & RCC | Plotted By: TSS |
| Recommended: | Checked By: MSK | Checked By: MSK |
| Approved: | Chief, Waterways Maintenance Section | |

**MISSISSIPPI RIVER - B.R. TO GULF
 SOUTHWEST PASS - SHEET 7
 SW_07_SWP_20240301_CS
 01 March 2024**

**Sheet Reference Number
 7 of 13**

Revision Number:
 4.2 - 202 (04/20)