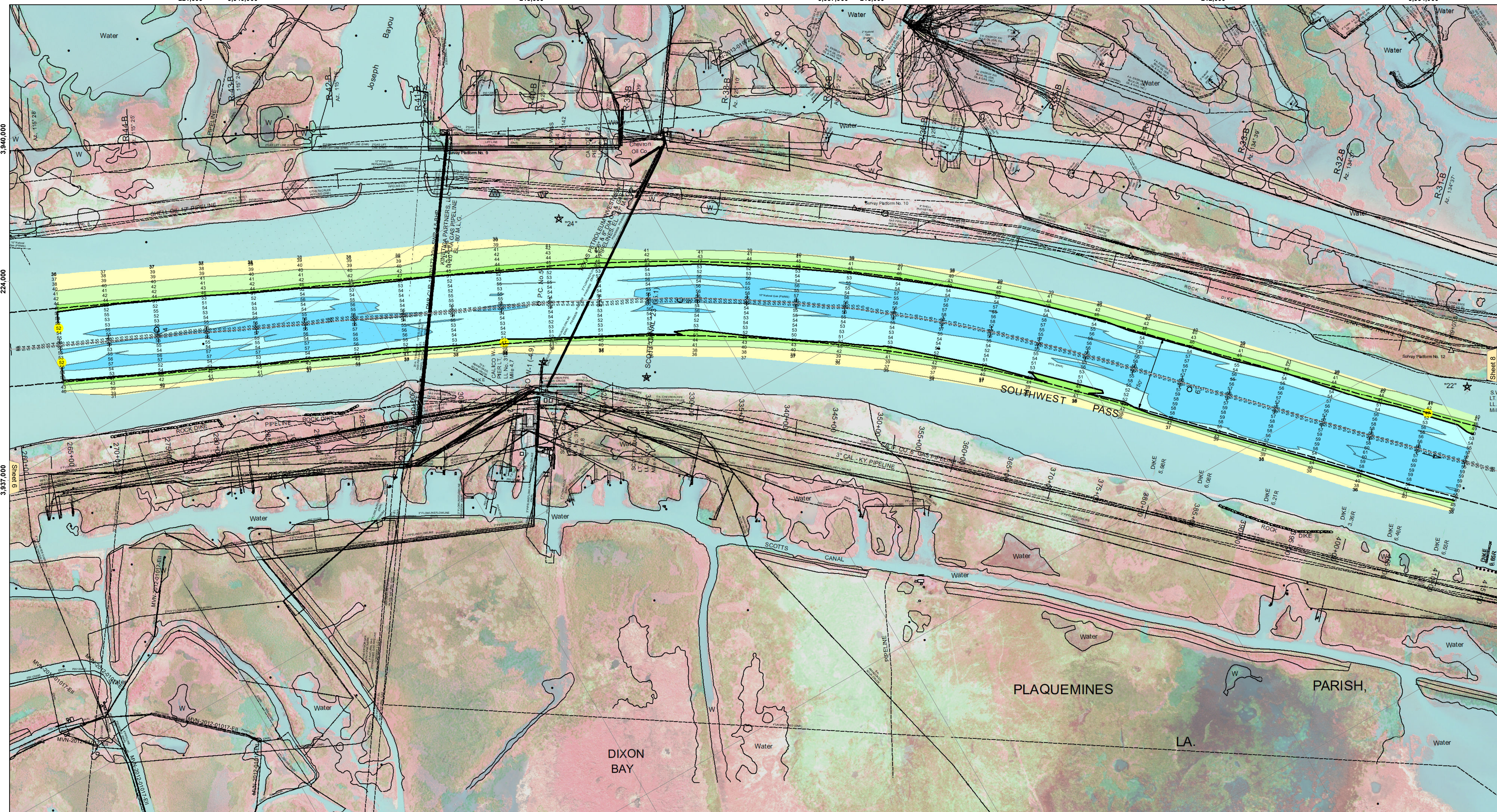


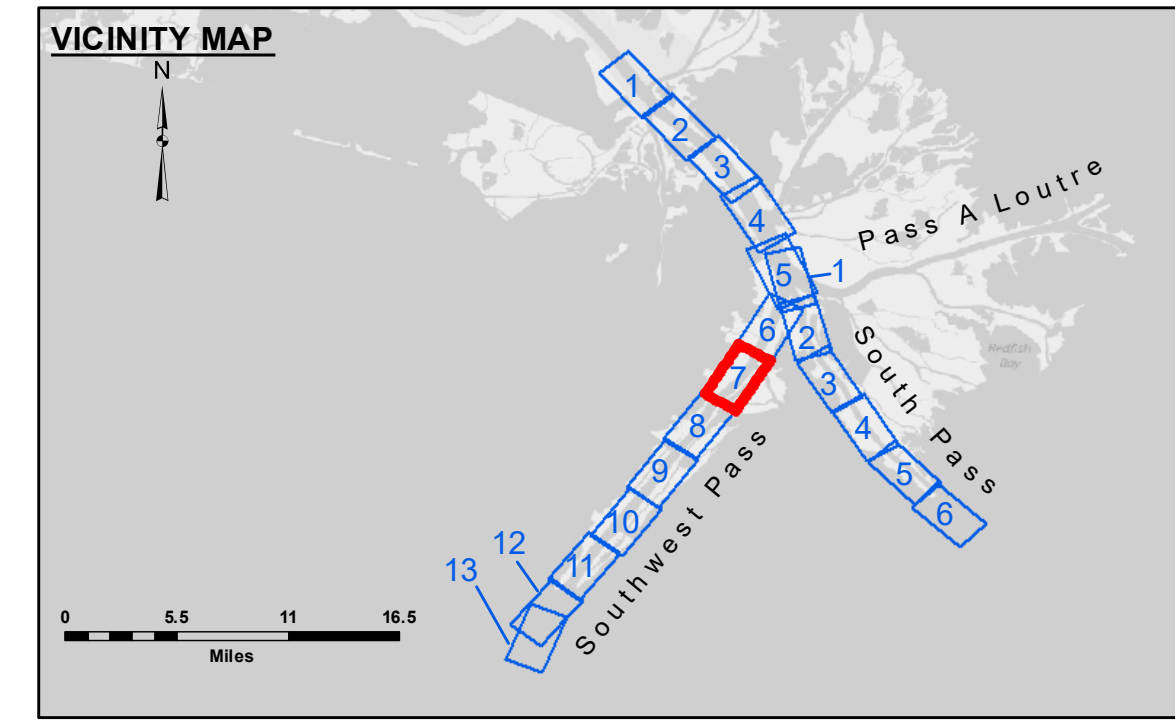
221,000 3,940,000 218,000 3,937,000 215,000 212,000 3,934,000



3,940,000 224,000 3,937,000 Sheet 6

3,931,000 212,000 Sheet 6

3,934,000 224,000 3,931,000 221,000 218,000 3,928,000 215,000



**LEGEND**

Federal Navigation Channel	Cable Area	Borrow Area	-10' and above
Federal Navigation Center Line	Placement Area	Shoalest Sounding**	-10' to -20'
As-built Pipeline/Cable	Anchorage Area	Beacon, General	-20' to -30'
Unconfirmed Pipeline/Cable	Obstruction Point	Red Navigation Buoy	-30' to -40'
Project Depth Contour	Wrecks-Submerged	Green Navigation Buoy	-40' to -45'
			-45' to -50'
			-50' to -55'
			-55' and below

**NOTES:**

Horizontal Coordinate System: North American Datum of 1983 (NAD83), projected to the State Plane Coordinate System (SPCS), Louisiana South Zone. Distance units in U.S. Survey Feet.

Vertical Datum: 0.1 MLLW @ HEAD OF PASSES @ 0910

Gage Reading: 0.1 MLLW @ HEAD OF PASSES @ 0910

Sea Conditions: CALM

Vessel Name: BLANCHARD

Survey Type: CONDITION, SB

Sounding Frequency\*\*\*: LOW

Soundings are shown in feet and indicate depths below Mean Lower Low Water (MLLW, 12-16). Datum Relationships for gage 01545 as of March 2020: 0.0' NAVD88, 2009.55 = -0.32' MLLW = 3.18' MLG

Distances on the Mississippi River, above and below Head of Passes are shown at 1 mile intervals.

The location of navigation aids are base on and provided by the U.S. Coast Guard.

2022 Aerial Photography data source: Optimal GEO (1998 DOQQ in green)

Reference is N.O.A. Navigation Chart No. 11361.

\*\* Shoalest Sounding per Quarter per Reach.

\*\*\* High frequency (200 kHz) survey data represents the first signal return at a sounding location and will include suspended solids, known as "fluff", if present. Low frequency (24 kHz) survey data normally penetrates through this "fluff" layer to depict elevations of consolidated bottom material. Low frequency accuracies may vary depending on channel conditions and fathometer settings.



**DISCLAIMER**

The data represented on this map is the result of a collection of data from various sources. The data is provided as is and is not guaranteed to be accurate. The user is responsible for the accuracy of the data used in any project. The user is also responsible for the accuracy of the data used in any project.

The data represented on this map is the result of a collection of data from various sources. The data is provided as is and is not guaranteed to be accurate. The user is responsible for the accuracy of the data used in any project. The user is also responsible for the accuracy of the data used in any project.

**ACCESS LIMITATIONS**

The United States Government furnishes these data and the recipient acquires and uses them with the express understanding that the data are not to be used for any purpose other than that for which they were provided. The user is responsible for the accuracy of the data used in any project. The user is also responsible for the accuracy of the data used in any project.

U.S. ARMY CORPS OF ENGINEERS NEW ORLEANS DISTRICT		
Submitted:	Surveyed By:	Checked By:
Recommended:	JTB & DBD	MSK
Approved:	Plotted By:	
	TSS	

**MISSISSIPPI RIVER - B.R. TO GULF  
SOUTHWEST PASS - SHEET 7  
SW\_07\_SWP\_20240320\_CS  
20 March 2024**

**Sheet Reference Number  
7 of 13**

Revision Number: 4.2-20240420