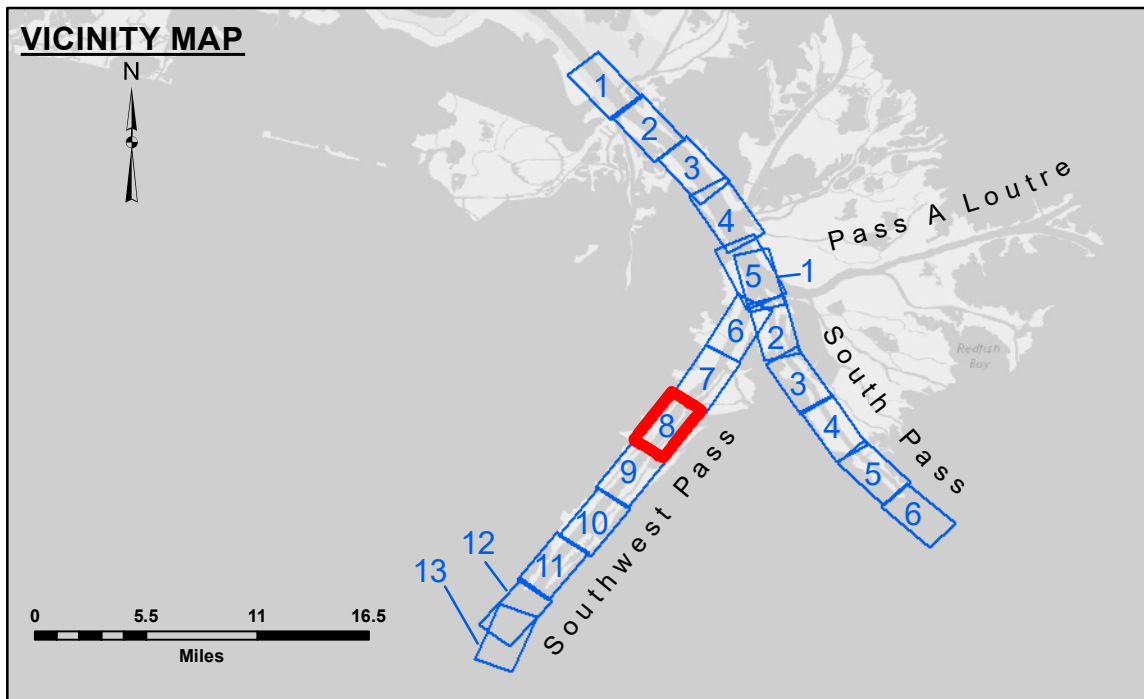


**DREDGE NEWPORT  
DREDGING RANGE 29-B TO RANGE 19-B  
FULL CHANNEL WIDTH**



LEGEND			
--- Federal Navigation Channel	● Cable Area	□ Borrow Area	■ -10' and above
— Federal Navigation Center Line	■ Placement Area	● Shoalest Sounding**	■ -10' to -20'
— As-built Pipeline/Cable	□ Anchorage Area	★ Beacon, General	■ -20' to -30'
..... Unconfirmed Pipeline/Cable	⊗ Obstruction Point	◆ Red Navigation Buoy	■ -30' to -40'
— Project Depth Contour	⚓ Wrecks-Submerged	◆ Green Navigation Buoy	■ -40' to -45'
			■ -45' to -48.5'
			■ -48.5' to -55'
			■ -55' and below

Gage Reading: 1.3 MLLW @ LIGHT-21 @ 1340  
 Sea Conditions: CALM  
 Vessel Name: BEAUVAIS & JOHN BOPP  
 Survey Type: CONDITION, SB  
 Sounding Frequency\*\*\*: LOW

**NOTES:**  
 Horizontal Coordinate System: North American Datum of 1983 (NAD83), projected to the State Plane Coordinate System (SPCS), Louisiana South Zone. Distance units in U.S. Survey Feet.  
 Vertical Datum: Soundings are shown in feet and indicate depths below Mean Lower Low Water (MLLW, 07-11). Datum Relationships for gage 01575 as of July 2015: 0.0' NAVD88 = 0.17' MLLW = 3.67' MLG  
 Distances on the Mississippi River, above and below Head of Passes are shown at 1 mile intervals.  
 The location of navigation aids are base on and provided by the U.S. Coast Guard.  
 2016 Aerial Photography data source: Precision Aerial Reconnaissance, LLC (1998 DOQQ in green)  
 Reference is N.O.A.A. Navigation Chart No. 11361.  
 \*\* Shoalest Sounding per Quarter per Reach.  
 \*\*\* High frequency (200 kHz) survey data represents the first signal return at a sounding location and will include suspended solids, known as "fluff", if present. Low frequency (24 kHz) survey data normally penetrates through this "fluff" layer to depict elevations of consolidated bottom material. Low frequency accuracies may vary depending on channel conditions and fathometer settings.



**DISCLAIMER:** The United States Government furnishes these data and the recipient accepts and uses them with the express understanding that the data are not to be used for any purpose other than that for which they were prepared, and that the data are not to be used for any purpose other than that for which they were prepared, and that the data are not to be used for any purpose other than that for which they were prepared.

U.S. ARMY CORPS OF ENGINEERS NEW ORLEANS DISTRICT		
Submitted:	Surveyed By: JUC & JTB	Plotted By: TSS
Recommended:	Checked:	Checked By: MSK
Approved:	Checked: Waterways Maintenance Section	

**MISSISSIPPI RIVER - B.R. TO GULF  
SOUTHWEST PASS - SHEET 8  
SW\_08\_SWP\_20190828\_CS  
28 August 2019**

**Sheet Reference Number  
8 of 13**

Revision Number:  
4.0-20190702