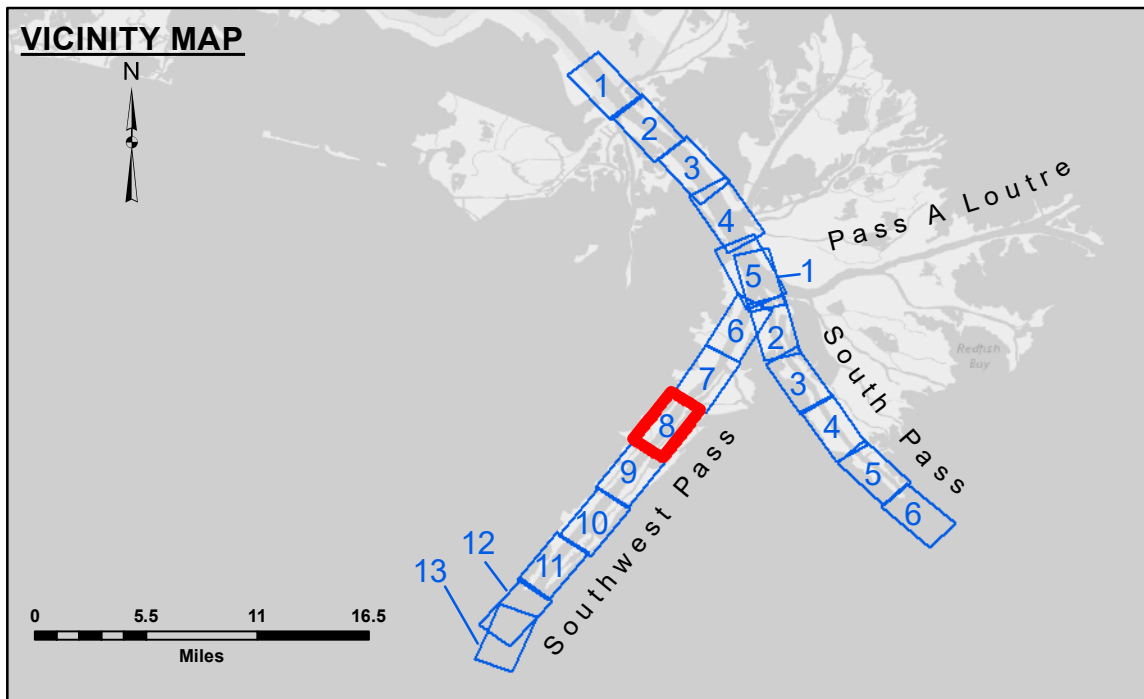


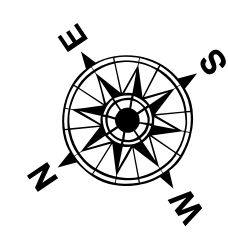
**CUTTERHEAD DREDGE CAPTAIN FRANK
DREDGING MILE 6.8 BHP TO MILE 8.2 BHP
EAST HALF OF THE CHANNEL**

3,931,000
212,000
3,925,000

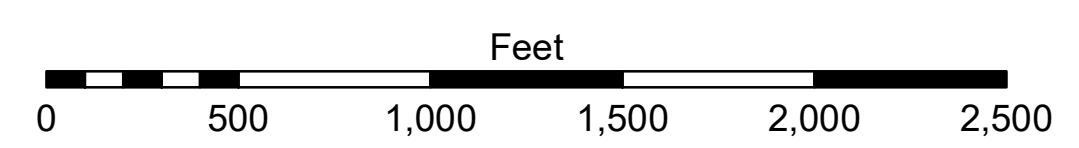
3,922,000
200,000
3,919,000



LEGEND			
--- Federal Navigation Channel	● Cable Area	□ Borrow Area	■ -10' and above
— Federal Navigation Center Line	■ Placement Area	● Shoalest Sounding**	■ -10' to -20'
— As-built Pipeline/Cable	□ Anchorage Area	★ Beacon, General	■ -20' to -30'
..... Unconfirmed Pipeline/Cable	⊗ Obstruction Point	◆ Red Navigation Buoy	■ -30' to -40'
— Project Depth Contour	⚓ Wrecks-Submerged	◆ Green Navigation Buoy	■ -40' to -45'
			■ -45' to -48.5'
			■ -48.5' to -55'
			■ -55' and below



Gage Reading: 2.2 MLLW @ LIGHT-21 @ 1205
 Sea Conditions: CHOPPY
 Vessel Name: BLANCHARD
 Survey Type: CONDITION, SB
 Sounding Frequency***: LOW



NOTES:
 Horizontal Coordinate System: North American Datum of 1983 (NAD83), projected to the State Plane Coordinate System (SPCS), Louisiana South Zone. Distance units in U.S. Survey Feet.
 Vertical Datum: Soundings are shown in feet and indicate depths below Mean Lower Low Water (MLLW, 07-11). Datum Relationships for gage 01575 as of July 2015: 0.0' NAVD88 = 0.17' MLLW = 3.67' MLG
 Distances on the Mississippi River, above and below Head of Passes are shown at 1 mile intervals.
 The location of navigation aids are base on and provided by the U.S. Coast Guard.
 2016 Aerial Photography data source: Precision Aerial Reconnaissance, LLC (1998 DOQQ in green)
 Reference is N.O.A.A. Navigation Chart No. 11361.
 ** Shoalest Sounding per Quarter per Reach.
 *** High frequency (200 kHz) survey data represents the first signal return at a sounding location and will include suspended solids, known as "fluff", if present. Low frequency (24 kHz) survey data normally penetrates through this "fluff" layer to depict elevations of consolidated bottom material. Low frequency accuracies may vary depending on channel conditions and fathometer settings.

U.S. ARMY CORPS OF ENGINEERS NEW ORLEANS DISTRICT		
Submitted:	Surveyed By: JTB & DED	Plotted By: TSS
Recommended:	Chief, Survey Section	Checked By: MSK
Approved:	Chief, Waterways Maintenance Section	

**MISSISSIPPI RIVER - B.R. TO GULF
SOUTHWEST PASS - SHEET 8
SW_08_SWP_20200319_CS_PRO
19 March 2020**

**Sheet Reference Number
8 of 13**

Revision Number:
4.0-20190102



DISCLAIMER: The United States Government furnishes these data and the recipient accepts and uses them with the express understanding that they are for informational purposes only and are not to be used for any purpose other than that for which they were prepared, or implied concerning the accuracy, completeness, reliability, usability or suitability for any particular purpose of the recipient. The user is responsible for the results of any use of these data. The recipient agrees to indemnify and hold the United States Government harmless from and against all claims, damages, losses and expenses, including reasonable attorneys' fees, that may be asserted against or incurred by the United States Government or its employees, agents, contractors, or subcontractors in connection with or arising out of the use of these data. The recipient may not transfer these data to others without also transferring this disclaimer. The information depicted on this map represents the results of a survey conducted by the United States Army Corps of Engineers and is not to be used for any purpose other than that for which it was prepared. The recipient agrees to indemnify and hold the United States Government harmless from and against all claims, damages, losses and expenses, including reasonable attorneys' fees, that may be asserted against or incurred by the United States Government or its employees, agents, contractors, or subcontractors in connection with or arising out of the use of these data. The recipient may not transfer these data to others without also transferring this disclaimer.