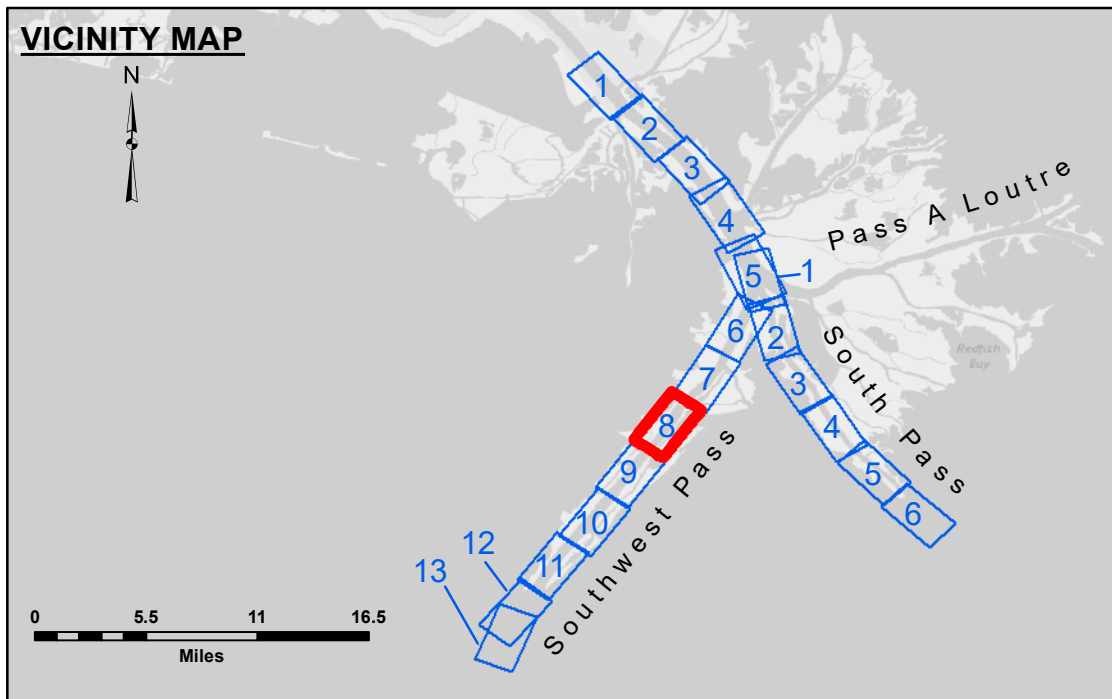


DISCLAIMER
 The United States Government furnishes these data and the recipient accepts and uses them with the express understanding that the data are not to be used for any purpose other than that intended by the donor. The user is responsible for the accuracy, completeness, reliability, usability or suitability for any particular purpose of the data. The recipient agrees to indemnify the United States Government under no liability whatsoever to any person by reason of any use of these data, including the use of these data for other than the intended purpose. The recipient may not transfer these data to others without the express written consent of the United States Government. The recipient may not transfer these data to others without the express written consent of the United States Government. The recipient may not transfer these data to others without the express written consent of the United States Government. The recipient may not transfer these data to others without the express written consent of the United States Government.

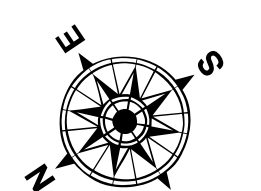
U.S. ARMY CORPS OF ENGINEERS NEW ORLEANS DISTRICT	
Surveyed By: JUC & DED	Plotted By: LLB
Recommended: Chief Survey Section	Checked By: MSK
Approved: Chief Waterways Maintenance Section	

MISSISSIPPI RIVER - B.R. TO GULF
 SOUTHWEST PASS - SHEET 8
 SW_08_SWP_20200422_CS_PRO
 22 April 2020

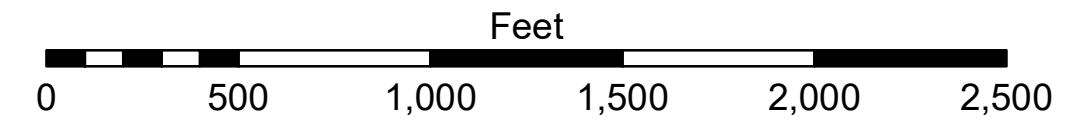


LEGEND

--- Federal Navigation Channel	● Cable Area	■ Borrow Area	■ -10' and above
— Federal Navigation Center Line	□ Placement Area	● Shoalest Sounding**	■ -10' to -20'
— As-built Pipeline/Cable	⊗ Anchorage Area	★ Beacon, General	■ -20' to -30'
..... Unconfirmed Pipeline/Cable	⊗ Obstruction Point	♦ Red Navigation Buoy	■ -30' to -40'
— Project Depth Contour	⚓ Wrecks-Submerged	♦ Green Navigation Buoy	■ -40' to -45'
			■ -45' to -48.5'
			■ -48.5' to -55'
			■ -55' and below



Gage Reading: 2.6 MLLW @ LIGHT 21 @ 0845
 Sea Conditions: CALM
 Vessel Name: BLANCHARD
 Survey Type: CONDITION, SB
 Sounding Frequency***: LOW



NOTES:
 Horizontal Coordinate System: North American Datum of 1983 (NAD83), projected to the State Plane Coordinate System (SPCS), Louisiana South Zone. Distance units in U.S. Survey Feet.
 Vertical Datum: Soundings are shown in feet and indicate depths below Mean Lower Low Water (MLLW, 07-11). Datum Relationships for gage 01575 as of July 2015: 0.0' NAVD88 = 0.17' MLLW = 3.67' MLG
 Distances on the Mississippi River, above and below Head of Passes are shown at 1 mile intervals.
 The location of navigation aids are base on and provided by the U.S. Coast Guard.
 2016 Aerial Photography data source: Precision Aerial Reconnaissance, LLC (1998 DOQQ in green)
 Reference is N.O.A. Navigation Chart No. 11361.
 ** Shoalest Sounding per Quarter per Reach.
 *** High frequency (200 kHz) survey data represents the first signal return at a sounding location and will include suspended solids, known as "fluff", if present. Low frequency (24 kHz) survey data normally penetrates through this "fluff" layer to depict elevations of consolidated bottom material. Low frequency accuracies may vary depending on channel conditions and fathometer settings.

Sheet Reference Number
 8 of 13
 Revision Number: 4.0-20190702