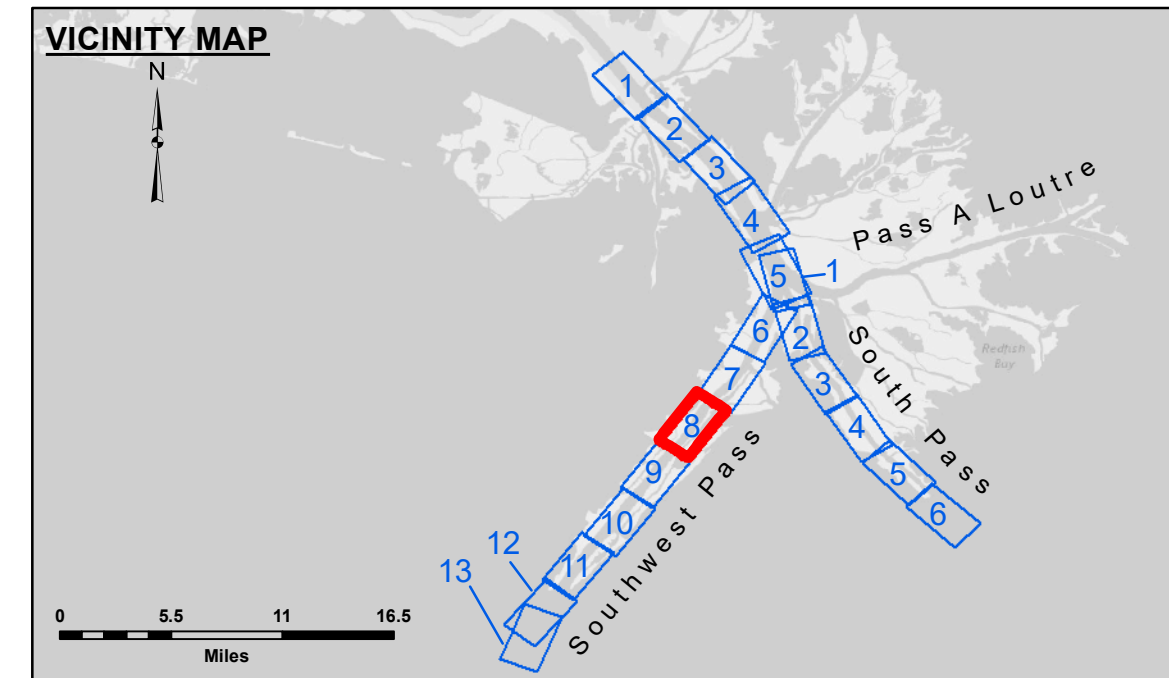


DISTRICT: CEMVN  
Access: Contaminants: The United States Government furnishes these data and the recipient accepts and uses them with the express understanding that the information is for official use only and is not to be distributed, copied, or used for any other purpose. The user is responsible for the accuracy, completeness, reliability, usability, or suitability for any particular purpose of the information. No warranty is made by the United States Government, its agencies, its contractors, or its subcontractors, for the accuracy, completeness, reliability, usability, or suitability for any particular purpose of the information. The recipient may not transfer these data to others without the written approval of the District Engineer. The recipient may not use these data for purposes other than those for which they were intended. The recipient may not use these data to represent the general condition existing at that time.

Surveyed By:	JTB & DED
Plotted By:	TSS
Recommended:	Chief, Survey Section
Approved:	Chief, Waterways Maintenance Section

**MISSISSIPPI RIVER - B.R. TO GULF**  
**SOUTHWEST PASS - SHEET 8**  
**SW\_08\_SWP\_20210630\_CS\_PRO**  
 30 June 2021



LEGEND			
---	Federal Navigation Channel	●	Cable Area
---	Federal Navigation Center Line	■	Placement Area
---	As-built Pipeline/Cable	■	Borrow Area
---	Unconfirmed Pipeline/Cable	●	Shoalest Sounding**
---	Project Depth Contour	☆	Beacon, General
---		◆	Red Navigation Buoy
		◆	Green Navigation Buoy
		⊗	Obstruction Point
		⊗	Wrecks-Submerged

Gage Reading: 1.8 MLLW @ LIGHT 21 @ 1100  
 Sea Conditions: CHOPPY  
 Vessel Name: BLANCHARD  
 Survey Type: CONDITION, SB  
 Sounding Frequency\*\*\*: LOW

**NOTES:**  
 Horizontal Coordinate System:  
 North American Datum of 1983 (NAD83), projected to the State Plane Coordinate System (SPCS), Louisiana South Zone. Distance units in U.S. Survey Feet.  
 Vertical Datum:  
 Soundings are shown in feet and indicate depths below Mean Lower Low Water (MLLW, 12-15).  
 Datum Relationships for gage 01575 as of March 2020:  
 0.0' NAVD88, 2009.55 = 0.10' MLLW = 3.60' MLG  
 Distances on the Mississippi River, above and below Head of Passes are shown at 1 mile intervals.  
 The location of navigation aids are base on and provided by the U.S. Coast Guard.  
 2016 Aerial Photography data source: Precision Aerial Reconnaissance, LLC (1998 DOQQ in green)  
 Reference is N.O.A.A. Navigation Chart No. 11361.  
 \*\* Shoalest Sounding per Quarter Per Reach.  
 \*\*\* High frequency (200 kHz) survey data represents the first signal return at a sounding location and will include suspended solids, known as "fluff", if present. Low frequency (24 kHz) survey data normally penetrates through this "fluff" layer to depict elevations of consolidated bottom material. Low frequency accuracies may vary depending on channel conditions and fathometer settings.

**Sheet Reference Number**  
**8 of 13**

Revision Number:  
 4.1-20191105