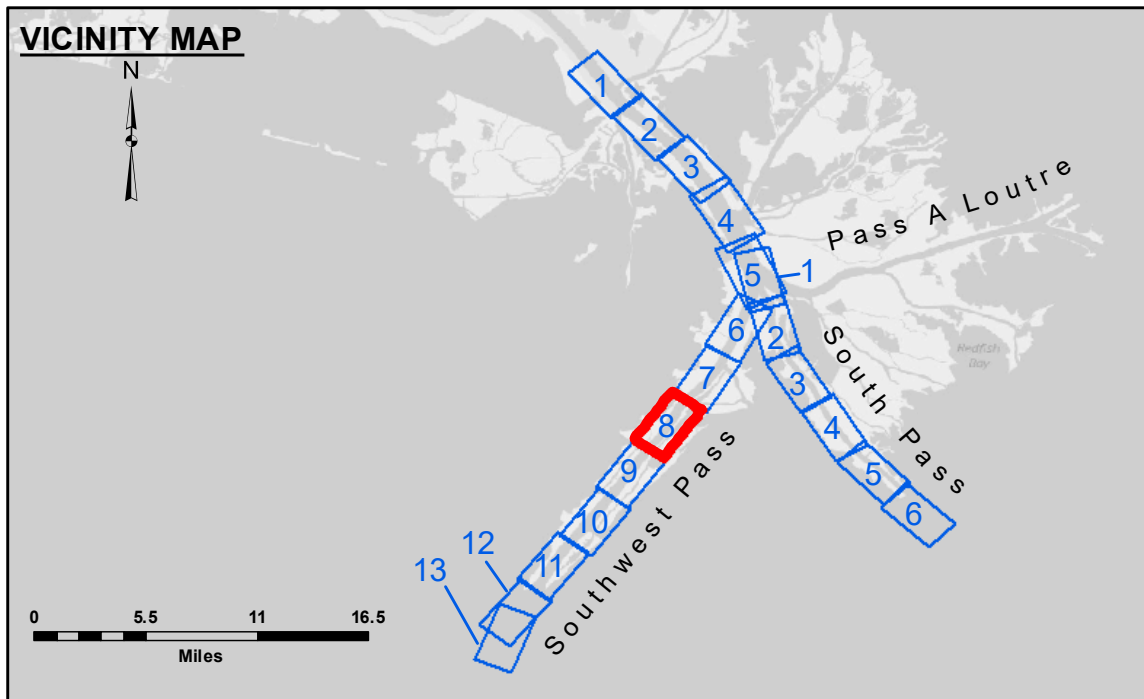
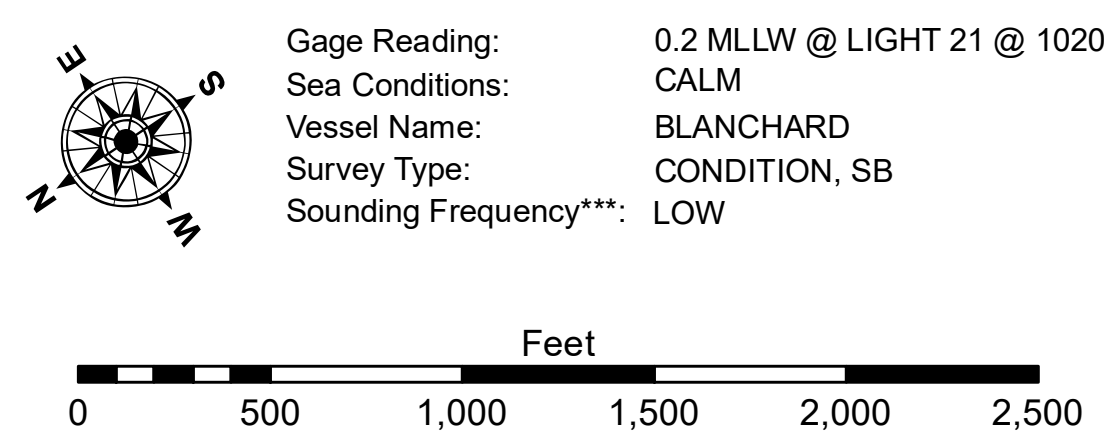


**CUTTERHEAD DREDGE ROBERT M. WHITE
DREDGING MILE 7.10 BHP TO MILE 7.95 BHP
WEST HALF OF THE CHANNEL**



LEGEND

| | | | |
|----------------------------------|---------------------|-------------------------|------------------|
| --- Federal Navigation Channel | ● Cable Area | □ Borrow Area | ■ -10' and above |
| — Federal Navigation Center Line | ■ Placement Area | ● Shoalest Sounding** | ■ -10' to -20' |
| — As-built Pipeline/Cable | □ Anchorage Area | ☆ Beacon, General | ■ -20' to -30' |
| Unconfirmed Pipeline/Cable | ⊗ Obstruction Point | ◆ Red Navigation Buoy | ■ -30' to -40' |
| — Project Depth Contour | ⚓ Wrecks-Submerged | ◆ Green Navigation Buoy | ■ -40' to -45' |
| | | | ■ -45' to -50' |
| | | | ■ -50' to -55' |
| | | | ■ -55' and below |



NOTES:
 Horizontal Coordinate System: North American Datum of 1983 (NAD83), projected to the State Plane Coordinate System (SPCS), Louisiana South Zone. Distance units in U.S. Survey Feet.
 Vertical Datum: Soundings are shown in feet and indicate depths below Mean Lower Low Water (MLLW, 12-15). Datum Relationships for gage 01575 as of March 2020: 0.0' NAVD88, 2009.55 = 0.10' MLLW = 3.60' MLG
 Distances on the Mississippi River, above and below Head of Passes are shown at 1 mile intervals.
 The location of navigation aids are base on and provided by the U.S. Coast Guard.
 2016 Aerial Photography data source: Precision Aerial Reconnaissance, LLC (1998 DOQQ in green)
 Reference is N.O.A. Navigation Chart No. 11361.
 ** Shoalest Sounding per Quarter per Reach.
 *** High frequency (200 kHz) survey data represents the first signal return at a sounding location and will include suspended solids, known as "fluff", if present. Low frequency (24 kHz) survey data normally penetrates through this "fluff" layer to depict elevations of consolidated bottom material. Low frequency accuracies may vary depending on channel conditions and fathometer settings.



DISCLAIMER: The United States Government furnishes these data and the recipient accepts and uses them with the express warranty, usability or suitability for any particular purpose of the recipient. The user is responsible for the results, accuracy, and reliability of the data for their own use. The user is not to be held liable for any damages, including but not limited to, direct, indirect, or consequential damages, arising from the use of the data. The user is not to be held liable for any damages, including but not limited to, direct, indirect, or consequential damages, arising from the use of the data. The user is not to be held liable for any damages, including but not limited to, direct, indirect, or consequential damages, arising from the use of the data. The user is not to be held liable for any damages, including but not limited to, direct, indirect, or consequential damages, arising from the use of the data.

| | | |
|--|---------------------------|-------------------------------------|
| U.S. ARMY CORPS OF ENGINEERS NEW ORLEANS DISTRICT | | |
| Submitted: | Surveyed By: JTB & DBD | Checked By: MSK |
| Recommended: | Plotted By: TSS | |
| Approved: | Chart Survey Section | Chart Waterways Maintenance Section |

**MISSISSIPPI RIVER - B.R. TO GULF
SOUTHWEST PASS - SHEET 8
SW_08_SWP_20220215_CS
15 February 2022**

**Sheet Reference Number
8 of 13**

Revision Number:
4.2-20220420