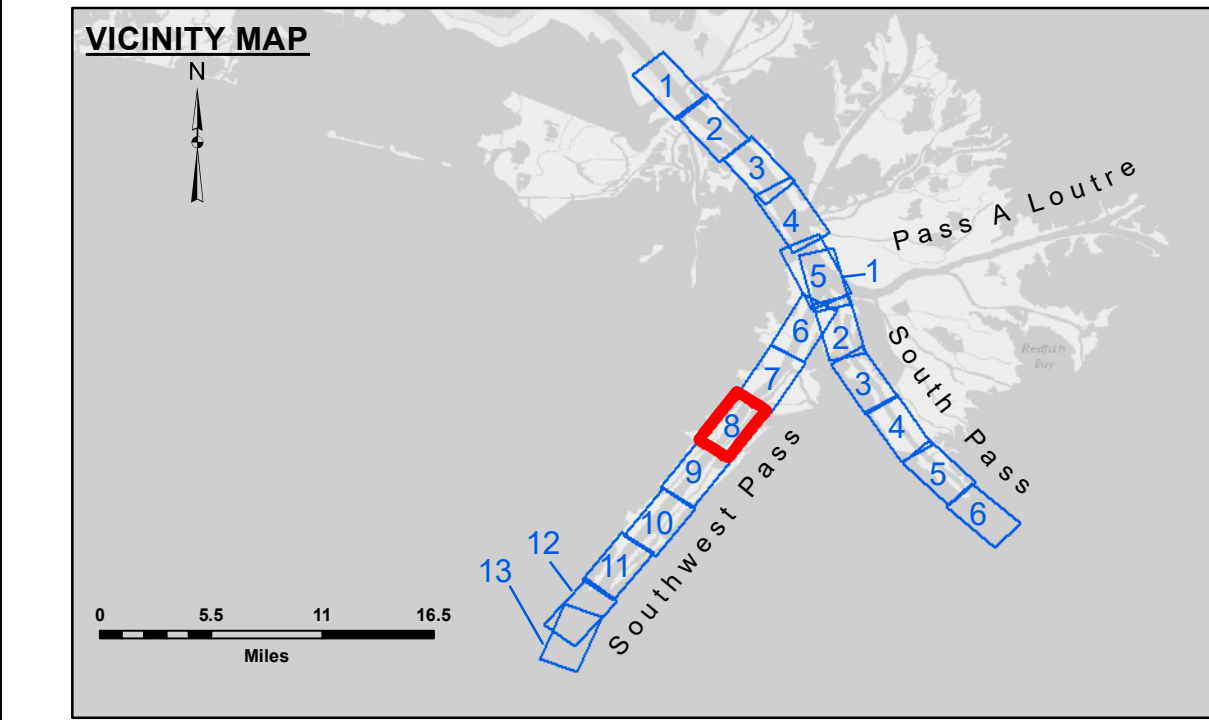
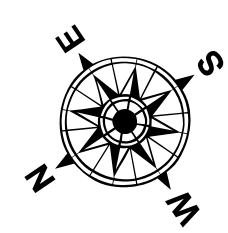


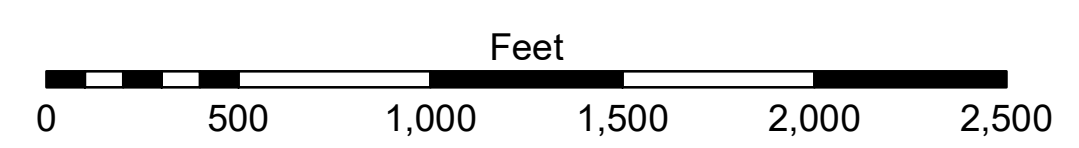
**CUTTERHEAD DREDGE ROBERT M. WHITE  
DREDGING MILE 9.15 BHP TO MILE 12.20 BHP  
EAST HALF OF THE CHANNEL**



LEGEND			
--- Federal Navigation Channel	● Cable Area	□ Borrow Area	■ -10' and above
— Federal Navigation Center Line	□ Placement Area	● Shoalest Sounding**	■ -10' to -20'
— As-built Pipeline/Cable	□ Anchorage Area	★ Beacon, General	■ -20' to -30'
..... Unconfirmed Pipeline/Cable	⊗ Obstruction Point	◆ Red Navigation Buoy	■ -30' to -40'
— Project Depth Contour	⚓ Wrecks-Submerged	◆ Green Navigation Buoy	■ -40' to -45'
			■ -45' to -50'
			■ -50' to -55'
			■ -55' and below



Gage Reading: 1.1 MLLW @ LIGHT 21 @ 1400  
 Sea Conditions: CALM  
 Vessel Name: JOHN BOPP  
 Survey Type: CONDITION, SB  
 Sounding Frequency\*\*\*: LOW



**NOTES:**  
 Horizontal Coordinate System: North American Datum of 1983 (NAD83), projected to the State Plane Coordinate System (SPCS), Louisiana South Zone. Distance units in U.S. Survey Feet.  
 Vertical Datum: Soundings are shown in feet and indicate depths below Mean Lower Low Water (MLLW, 12-15). Datum Relationships for gage 01575 as of March 2020: 0.0' NAVD83, 2009.55 = 0.10' MLLW = 3.60' MLG  
 Distances on the Mississippi River, above and below Head of Passes are shown at 1 mile intervals.  
 The location of navigation aids are base on and provided by the U.S. Coast Guard.  
 2016 Aerial Photography data source: Precision Aerial Reconnaissance, LLC (1998 DOQQ in green)  
 Reference is N.O.A.A. Navigation Chart No. 11361.  
 \*\* Shoalest Sounding per Quarter per Reach.  
 \*\*\* High frequency (200 kHz) survey data represents the first signal return at a sounding location and will include suspended solids, known as "fluff", if present. Low frequency (24 kHz) survey data normally penetrates through this "fluff" layer to depict elevations of consolidated bottom material. Low frequency accuracies may vary depending on channel conditions and fathometer settings.



**DISCLAIMER:** The United States Government furnishes these data and the recipient accepts and uses them with the express warranty, or implied concerning the accuracy, completeness, reliability, usability or suitability for any particular purpose of the data, under no liability whatsoever to any person by reason of any use of the data. The recipient agrees to accept the data as provided and to indemnify the United States Government from and against all claims, damages, losses, and expenses, including reasonable attorneys' fees, that may be incurred by the United States Government as a result of the use of the data. The recipient may not transfer these data to others without obtaining the permission of the United States Government. The information depicted on this map represents the results of a survey conducted by the United States Army Corps of Engineers and is not to be used for any purpose other than that for which it was prepared. The recipient is responsible for the accuracy of the data and for any use of the data for other than the intended purpose. The recipient agrees to accept the data as provided and to indemnify the United States Government from and against all claims, damages, losses, and expenses, including reasonable attorneys' fees, that may be incurred by the United States Government as a result of the use of the data. The recipient may not transfer these data to others without obtaining the permission of the United States Government.

U.S. ARMY CORPS OF ENGINEERS NEW ORLEANS DISTRICT		
Submitted:	Surveyed By:	JH & RCC
Recommended:	Plotted By:	TSS
Approved:	Checked By:	MSK
		Chief, Waterways Maintenance Section

**MISSISSIPPI RIVER - B.R. TO GULF  
SOUTHWEST PASS - SHEET 8  
SW\_08\_SWP\_20220316\_CS\_PRO  
16 March 2022**

**Sheet Reference Number  
8 of 13**

Revision Number:  
4.2-20200420