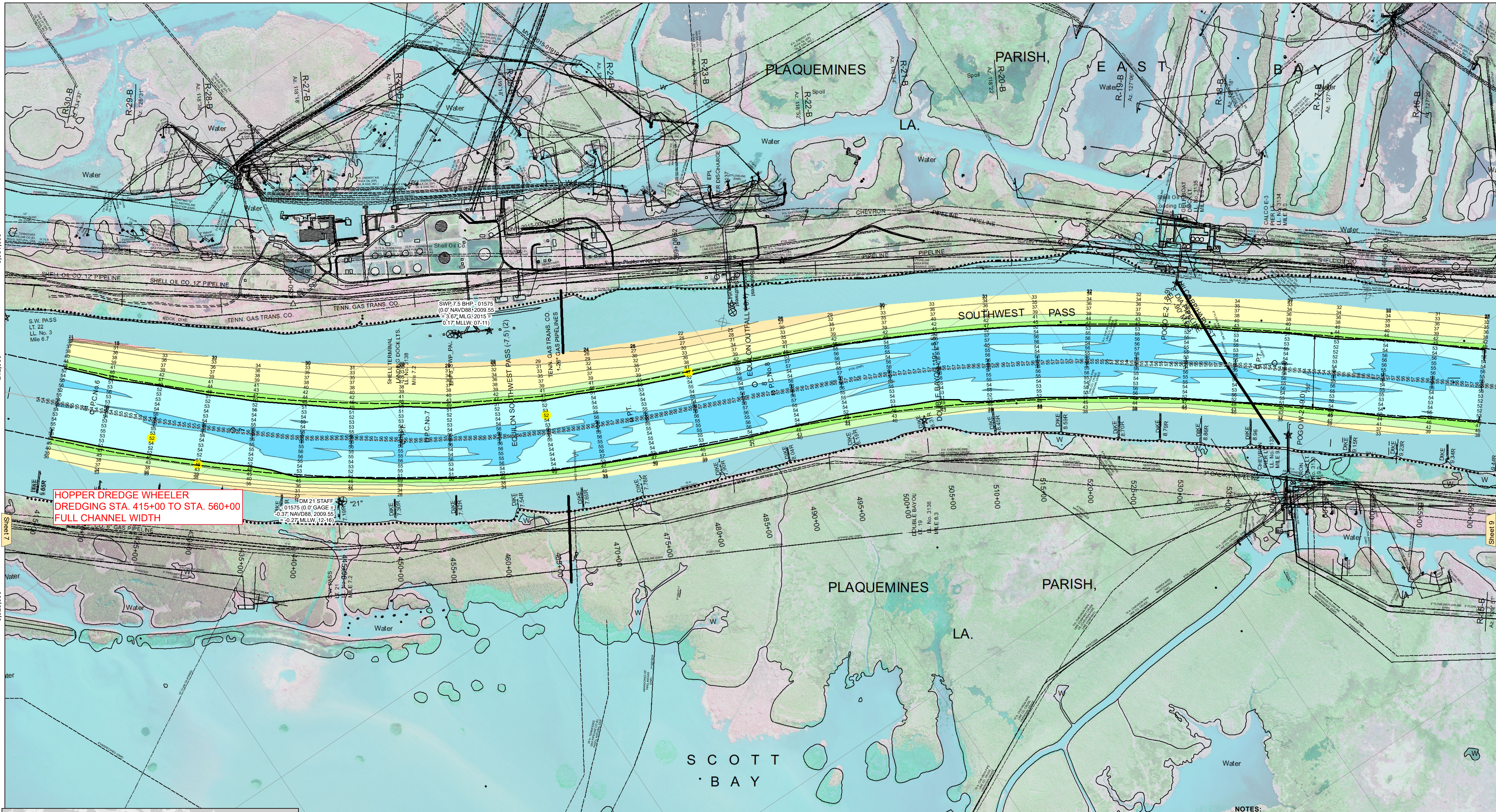
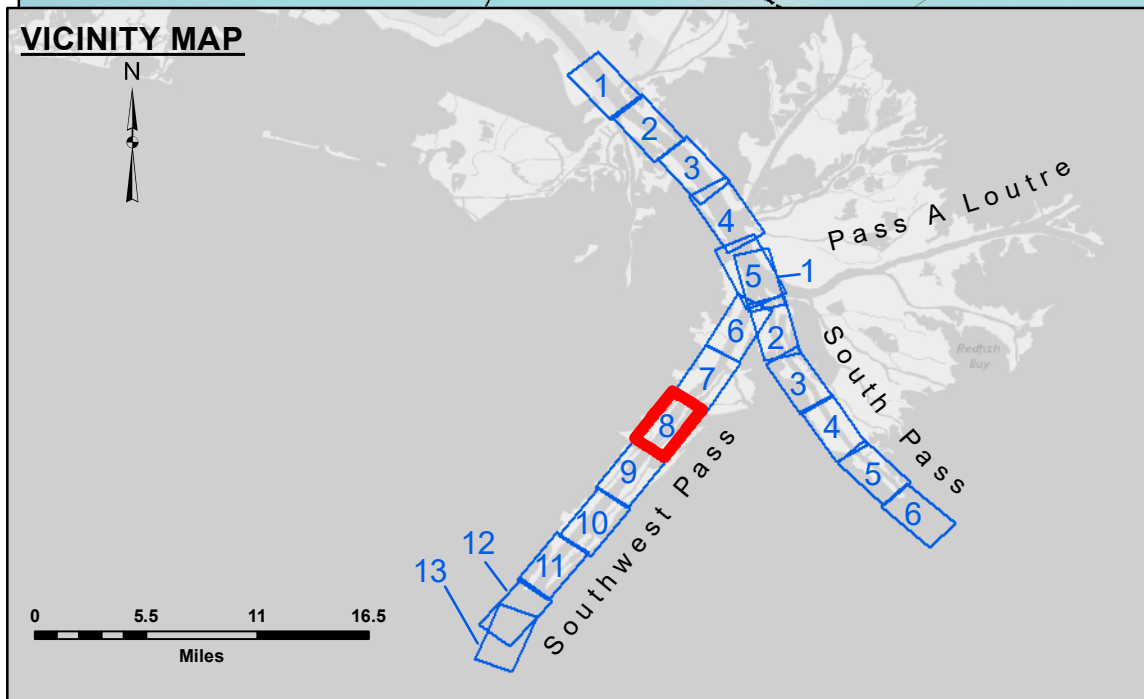


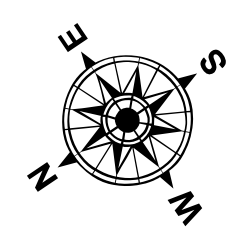
209,000 3,931,000 206,000 203,000 3,928,000 200,000 3,925,000



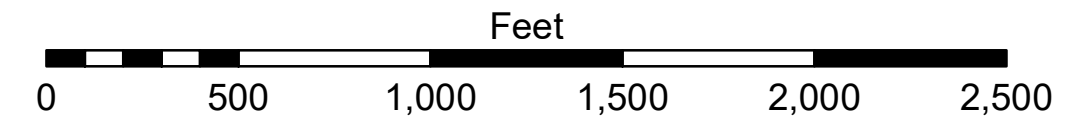
HOPPER DREDGE WHEELER DREDGING STA. 415+00 TO STA. 560+00 FULL CHANNEL WIDTH



LEGEND table with symbols for Federal Navigation Channel, Cable Area, Borrow Area, Shoalest Sounding, etc.



Gage Reading: 0.7 MLLW @ LIGHT 21 @ 1015
Sea Conditions: CALM
Vessel Name: BEAUVAIS
Survey Type: CONDITION, SB
Sounding Frequency***: LOW



NOTES:

Horizontal Coordinate System: North American Datum of 1983 (NAD83), projected to the State Plane Coordinate System (SPCS), Louisiana South Zone.
Vertical Datum: Soundings are shown in feet and indicate depths below Mean Lower Low Water (MLLW, 12-15).
Reference is N.O.A.A. Navigation Chart No. 11361.



Distribution Liability: The data represents the results of data collection... The user is responsible for the results...
Access Constraints: The United States Government furnishes these data and the recipient accepts and uses them with the express understanding that the data are provided for informational purposes only.

Approval table with columns for Submitted, Recommended, and Approved, listing names like JUC & MGF, TSS, and MSK.

MISSISSIPPI RIVER - B.R. TO GULF
SOUTHWEST PASS - SHEET 8
SW_08_SWP_20220818_CS
18 August 2022

Sheet Reference Number
8 of 13
Revision Number: 4.2-20200420