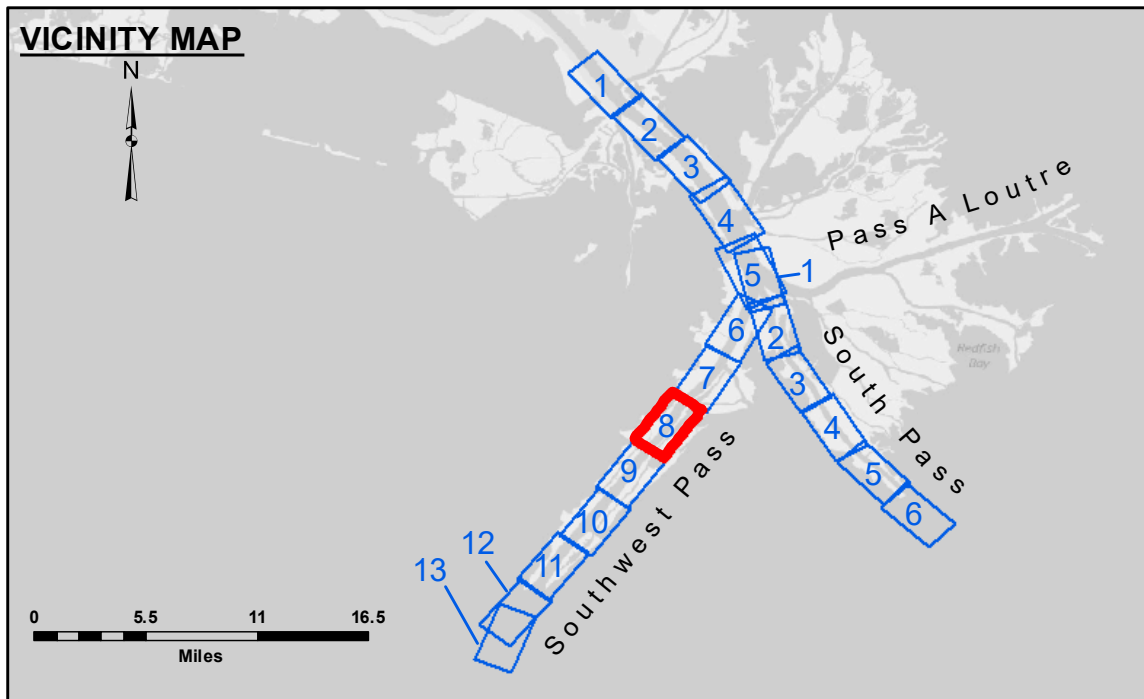
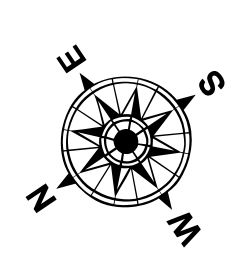


3,931,000  
212,000  
3,928,000  
3,931,000  
212,000  
3,928,000

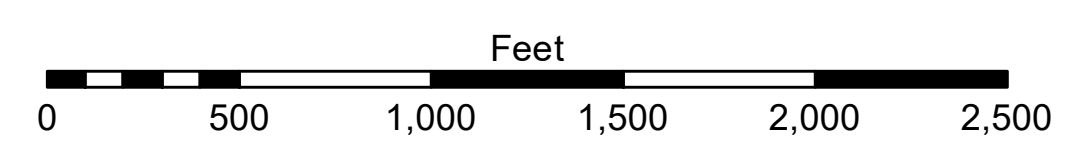
209,000 206,000 203,000 200,000 197,000  
3,925,000 3,922,000 3,919,000 3,916,000 3,913,000



LEGEND	
--- Federal Navigation Channel	● Cable Area
— Federal Navigation Center Line	□ Placement Area
— As-built Pipeline/Cable	□ Anchorage Area
..... Unconfirmed Pipeline/Cable	⊗ Obstruction Point
— Project Depth Contour	✦ Wrecks-Submerged
□ Borrow Area	★ Beacon, General
● Shoalest Sounding**	◆ Red Navigation Buoy
◆ Green Navigation Buoy	
■ -10' and above	
■ -10' to -20'	
■ -20' to -30'	
■ -30' to -40'	
■ -40' to -45'	
■ -45' to -50'	
■ -50' to -55'	
■ -55' and below	



Gage Reading: 0.9 MLLW @ LIGHT 21 @ 1520  
 Sea Conditions: CALM  
 Vessel Name: TOBIN  
 Survey Type: CONDITION, SB  
 Sounding Frequency\*\*\*: LOW



**NOTES:**  
 Horizontal Coordinate System: North American Datum of 1983 (NAD83), projected to the State Plane Coordinate System (SPCS), Louisiana South Zone. Distance units in U.S. Survey Feet.  
 Vertical Datum: Soundings are shown in feet and indicate depths below Mean Lower Low Water (MLLW, 12-15). Datum Relationships for gage 01575 as of March 2020: 0.0' NAVD83, 2009.55 = 0.10' MLLW = 3.60' MLG  
 Distances on the Mississippi River, above and below Head of Passes are shown at 1 mile intervals.  
 The location of navigation aids are based on and provided by the U.S. Coast Guard.  
 2022 Aerial Photography data source: Optimal GEO (1998 DOQQ in green)  
 Reference is N.O.A. Navigation Chart No. 11361.  
 \*\* Shoalest Sounding per Quarter per Reach.  
 \*\*\* High frequency (200 kHz) survey data represents the first signal return at a sounding location and will include suspended solids, known as "fluff", if present. Low frequency (24 kHz) survey data normally penetrates through this "fluff" layer to depict elevations of consolidated bottom material. Low frequency accuracies may vary depending on channel conditions and fathometer settings.



**DISTRIBUTION LIABILITY:** The data represents the results of data collection/processing for a specific US Army Corps of Engineers project and is only valid for its intended use, content, time and accuracy specifications. The user is responsible for the results and accuracy of any data derived from this information. The user is responsible for the results and accuracy of any data derived from this information. The user is responsible for the results and accuracy of any data derived from this information. The user is responsible for the results and accuracy of any data derived from this information.

Submitted:	Checked By:
Recommended:	Checked By:
Approved:	Checked By:
U.S. ARMY CORPS OF ENGINEERS NEW ORLEANS DISTRICT	
Surveyed By: JH & MGF	
Plotted By: TSS	
Checked By: MSK	

**MISSISSIPPI RIVER - B.R. TO GULF  
 SOUTHWEST PASS - SHEET 8  
 SW\_08\_SWP\_20230309\_CS  
 09 March 2023**

**Sheet Reference Number  
 8 of 13**