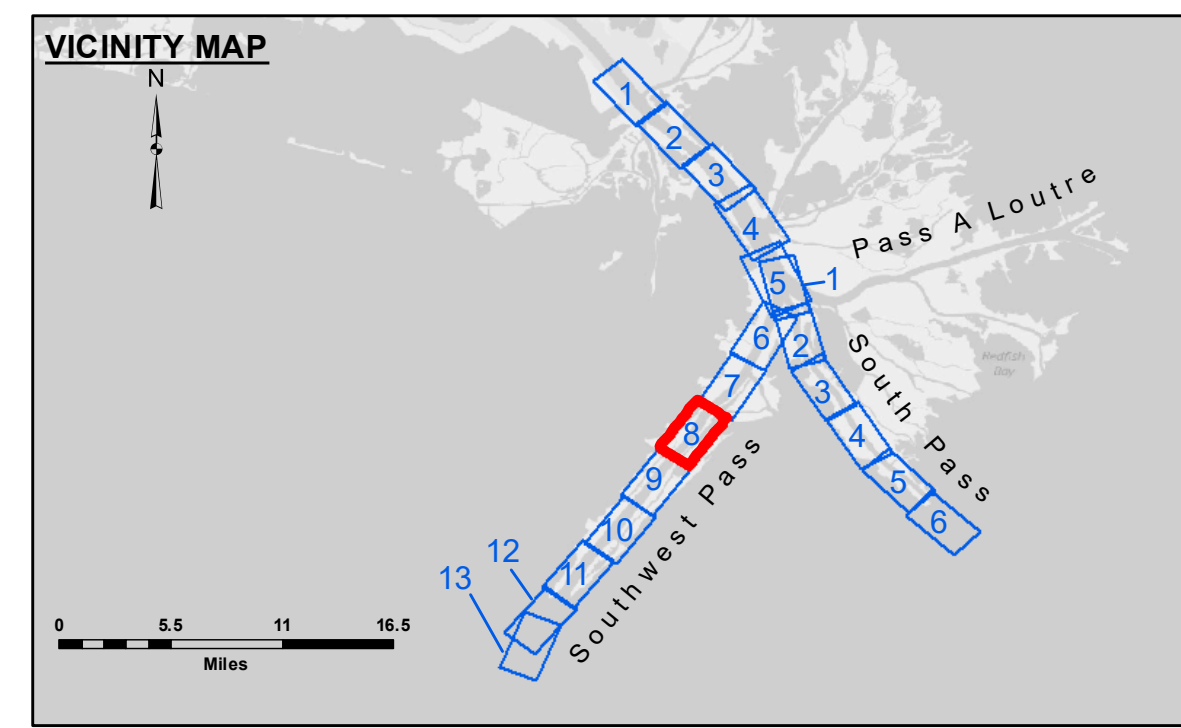


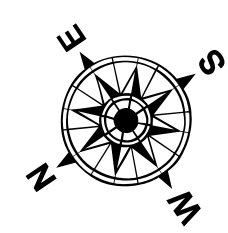
3,931,000  
212,000  
3,928,000  
Sheet 7

3,922,000  
200,000  
3,919,000

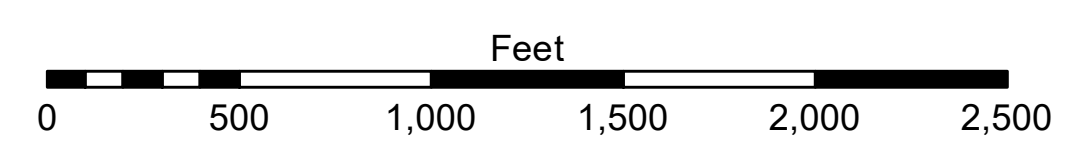


**LEGEND**

--- Federal Navigation Channel	○ Cable Area	□ Borrow Area	■ -10' and above
— Federal Navigation Center Line	□ Placement Area	● Shoalest Sounding**	■ -10' to -20'
— As-built Pipeline/Cable	□ Anchorage Area	★ Beacon, General	■ -20' to -30'
..... Unconfirmed Pipeline/Cable	⊗ Obstruction Point	◆ Red Navigation Buoy	■ -30' to -40'
— Project Depth Contour	★ Wrecks-Submerged	◆ Green Navigation Buoy	■ -40' to -45'
			■ -45' to -50'
			■ -50' to -55'
			■ -55' and below



Gage Reading: 1.7 MLLW @ MM 7.5 LT-21 (01575) @ 1050  
 Sea Conditions: CHOPPY  
 Vessel Name: TOBIN  
 Survey Type: CONDITION, SB  
 Sounding Frequency\*\*\*: LOW



**NOTES:**  
 Horizontal Coordinate System: North American Datum of 1983 (NAD83), projected to the State Plane Coordinate System (SPCS), Louisiana South Zone. Distance units in U.S. Survey Feet.  
 Vertical Datum: 1.7 MLLW @ MM 7.5 LT-21 (01575) @ 1050  
 Soundings are shown in feet and indicate depths below Mean Lower Low Water (MLLW, 12-15). Datum Relationships for gage 01575 as of March 2020: 0.0' NAVD88, 2009.55 = 0.10' MLLW = 3.60' MLG  
 Distances on the Mississippi River, above and below Head of Passes are shown at 1 mile intervals.  
 The location of navigation aids are based on and provided by the U.S. Coast Guard.  
 2022 Aerial Photography data source: Optimal GEO (1998 DOQQ in green)  
 Reference is N.O.A. Navigation Chart No. 11361.  
 \*\* Shoalest Sounding per Quarter per Reach.  
 \*\*\* High frequency (200 kHz) survey data represents the first signal return at a sounding location and will include suspended solids, known as "fluff", if present. Low frequency (24 kHz) survey data normally penetrates through this "fluff" layer to depict elevations of consolidated bottom material. Low frequency accuracies may vary depending on channel conditions and fathometer settings.

U.S. ARMY CORPS OF ENGINEERS  
NEW ORLEANS DISTRICT

Submitted:	Surveyed By: JH & RCC
Recommended: Chart Survey Section	Plotted By: TSS
Approved: Chart Waterways Maintenance Section	Checked By: MSK

MISSISSIPPI RIVER - B.R. TO GULF  
 SOUTHWEST PASS - SHEET 8  
 SW\_08\_SWP\_20240326\_CS  
 26 March 2024

Sheet Reference Number  
 8 of 13

Revision Number:  
 4.2-202 (04/20)

**US Army Corps of Engineers District: CEMVN**

**DISCLAIMER:** The United States Government furnishes these data and the recipient accepts and uses them with the express understanding that the data are provided for informational purposes only and are not to be used for any purpose other than that for which they were originally prepared, or implied concerning the accuracy, completeness, reliability, usability, or suitability for any particular purpose of the recipient. The user is responsible for the results and accuracy of any use of the data. The user is responsible for the results and accuracy of any use of the data. The user is responsible for the results and accuracy of any use of the data.

**DISTRIBUTION STATEMENT:** This document is classified "Unclassified" unless otherwise indicated. It is approved for release to the public. It is approved for release to the public. It is approved for release to the public.

**DATE:** 26 March 2024