

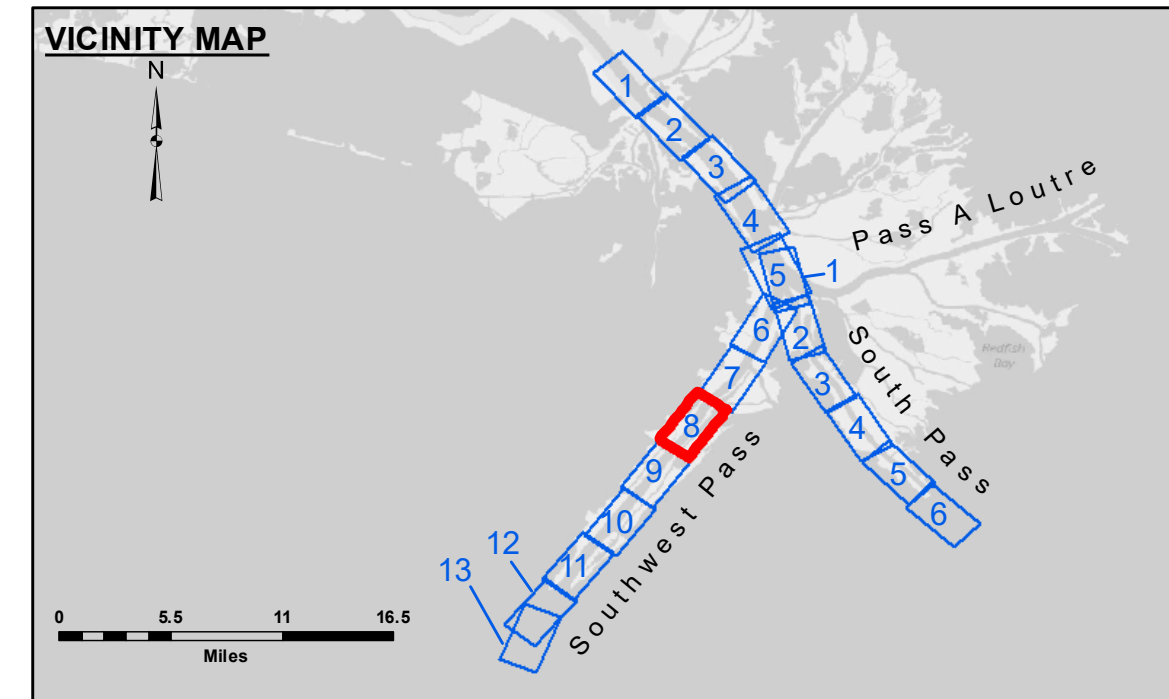
ACCESS NOTES
 Access Constraints: The United States Government furnishes these data and the recipient accepts and uses them with the express understanding that they are not to be distributed, reproduced, or transmitted, in any form or by any means, electronic, mechanical, photocopying, recording, or by any information storage and retrieval system, without the express written permission of the United States Government.
 Distribution Liability: The data represents the results of data collection/processing for a specific US Army Corps of Engineers project. It is not to be used for any other purpose. The user is responsible for the results and accuracy of the data for any other use.
 Date Constants: Hydrographic survey data is subject to change frequently due to several factors including but not limited to dredging, shoaling, and shifting of the channel. The user should check for updates to the hydrographic data which develop after the date of the information depicted on the map represents the results of a survey. The user should consult the Hydrographic Survey Report to represent the general condition existing at that time.

Submitted	Surveyed By: JUC & DEB
Recommended: Chart Survey Section	Plotted By: TSS
Approved: Chart Waterways Maintenance Section	Checked By: MSK

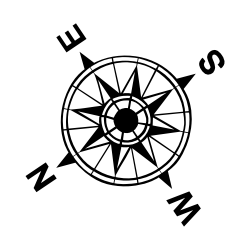
**MISSISSIPPI RIVER - B.R. TO GULF
 SOUTHWEST PASS - SHEET 8
 SW_08_SWP_20240402_CS**
 02 April 2024

Sheet Reference Number
 8 of 13

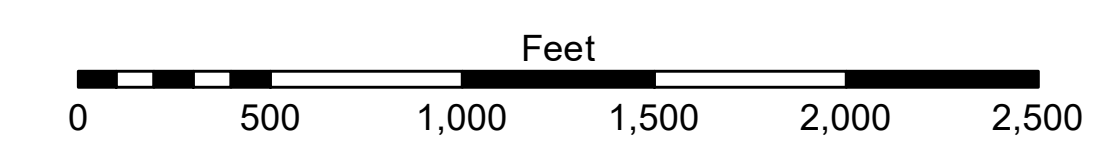
Revision Number: 4.2-202 (04/24)



LEGEND			
	Federal Navigation Channel		-10' and above
	Federal Navigation Center Line		-10' to -20'
	As-built Pipeline/Cable		-20' to -30'
	Unconfirmed Pipeline/Cable		-30' to -40'
	Project Depth Contour		-40' to -45'
	Cable Area		-45' to -50'
	Placement Area		-50' to -55'
	Anchorage Area		-55' and below
	Obstruction Point		Borrow Area
	Beacon, General		Shoalest Sounding**
	Red Navigation Buoy		Beacon, General
	Green Navigation Buoy		Red Navigation Buoy
	Wrecks-Submerged		Green Navigation Buoy



Gage Reading: 1.5 MLLW @ MM 7.5 LT-21 (01575) @ 1245
 Sea Conditions: CALM, FLUFF
 Vessel Name: BLANCHARD
 Survey Type: CONDITION, SB
 Sounding Frequency***: LOW



NOTES:
 Horizontal Coordinate System: North American Datum of 1983 (NAD83), projected to the State Plane Coordinate System (SPCS), Louisiana South Zone. Distance units in U.S. Survey Feet.
 Vertical Datum: Mean Low Water (MLLW), 12-15'.
 Soundings are shown in feet and indicate depths below Mean Low Water (MLLW), 12-15'.
 Datum Relationships for gage 01575 as of March 2020: 0.0' NAVD83, 2009.55 = 0.10' MLLW = 3.60' MLG
 Distances on the Mississippi River, above and below Head of Passes are shown at 1 mile intervals.
 The location of navigation aids are based on and provided by the U.S. Coast Guard.
 2022 Aerial Photography data source: Optimal GEO (1998 DOQQ in green)
 Reference is N.O.A. Navigation Chart No. 11361.
 ** Shoalest Sounding per Quarter per Reach.
 *** High frequency (200 kHz) survey data represents the first signal return at a sounding location and will include suspended solids, known as "fluff", if present. Low frequency (24 kHz) survey data normally penetrates through this "fluff" layer to depict elevations of consolidated bottom material. Low frequency accuracies may vary depending on channel conditions and fathometer settings.