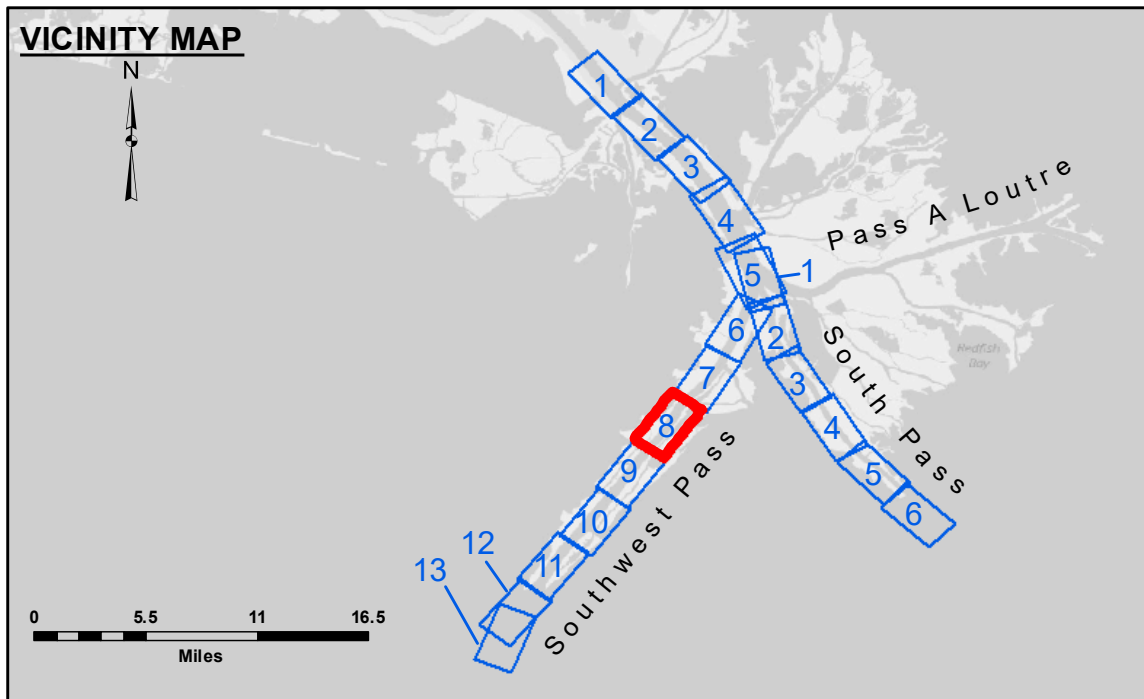


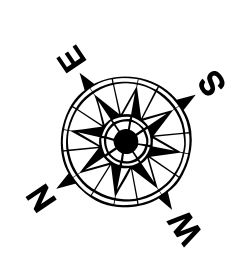
DREDGE GLENN EDWARDS
DREDGING FULL CHANNEL WIDTH
STA. 400+00 TO STA 575+00 SHEETS 7-9

3,931,000
212,000
3,928,000

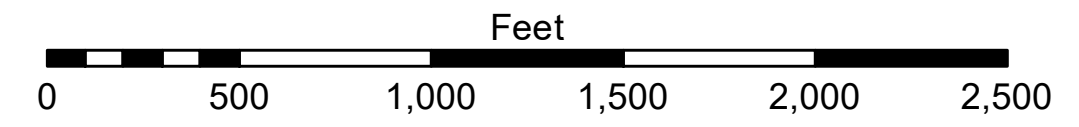
3,922,000
200,000
3,919,000



LEGEND			
--- Federal Navigation Channel	● Cable Area	■ Borrow Area	■ -10' and above
— Federal Navigation Center Line	□ Placement Area	● Shoalest Sounding**	■ -10' to -20'
— As-built Pipeline/Cable	⊗ Anchorage Area	☆ Beacon, General	■ -20' to -30'
..... Unconfirmed Pipeline/Cable	⊗ Obstruction Point	◆ Red Navigation Buoy	■ -30' to -40'
— Project Depth Contour	⚓ Wrecks-Submerged	◆ Green Navigation Buoy	■ -40' to -45'
			■ -45' to -50'
			■ -50' to -55'
			■ -55' and below



Gage Reading: 1.3 MLLW @ MM 7.5 LT-21 (01575) @ 1045
 Sea Conditions: CALM
 Vessel Name: BLANCHARD
 Survey Type: CONDITION, SB
 Sounding Frequency***: LOW



NOTES:
 Horizontal Coordinate System: North American Datum of 1983 (NAD83), projected to the State Plane Coordinate System (SPCS), Louisiana South Zone. Distance units in U.S. Survey Feet.
 Vertical Datum: Mean Lower Low Water (MLLW, 12-15).
 Soundings are shown in feet and indicate depths below Mean Lower Low Water (MLLW, 12-15).
 Datum Relationships for gage 01575 as of March 2020:
 0.0' NAVD83, 2009.55 = 0.10' MLLW = 3.60' MLG
 Distances on the Mississippi River, above and below Head of Passes are shown at 1 mile intervals.
 The location of navigation aids are base on and provided by the U.S. Coast Guard.
 2022 Aerial Photography data source: Optimal GEO (1998 DOQQ in green)
 Reference is N.O.A. Navigation Chart No. 11361.
 ** Shoalest Sounding per Quarter per Reach.
 *** High frequency (200 kHz) survey data represents the first signal return at a sounding location and will include suspended solids, known as "fluff", if present. Low frequency (24 kHz) survey data normally penetrates through this "fluff" layer to depict elevations of consolidated bottom material. Low frequency accuracies may vary depending on channel conditions and fathometer settings.

U.S. ARMY CORPS OF ENGINEERS NEW ORLEANS DISTRICT			
Submitted:	Surveyed By: JTB & DEB	Plotted By: RSL	Checked By: MSK
Recommended: Chart Survey Section			
Approved:	Chart Waterways Maintenance Section		

**MISSISSIPPI RIVER - B.R. TO GULF
 SOUTHWEST PASS - SHEET 8
 SW_08_SWP_20240506_CS
 06 May 2024**

**Sheet
 Reference
 Number
 8 of 13**

Revision Number:
 4.2-202 (04/20)



DISCLAIMER:
 The United States Government furnishes these data and the recipient accepts and uses them with the express understanding that the data are provided for informational purposes only. The data are not to be used for any purpose other than that for which they were originally collected. The user is responsible for the results and accuracy of any data derived from the information furnished. The user is responsible for the results and accuracy of any data derived from the information furnished. The user is responsible for the results and accuracy of any data derived from the information furnished.
DISTRIBUTION LIABILITY: The data represents the results of data collection-processing for a specific US Army Corps of Engineers project. It is only valid for its intended use, content, time and accuracy specifications. The user is responsible for the results and accuracy of any data derived from the information furnished. The user is responsible for the results and accuracy of any data derived from the information furnished. The user is responsible for the results and accuracy of any data derived from the information furnished.