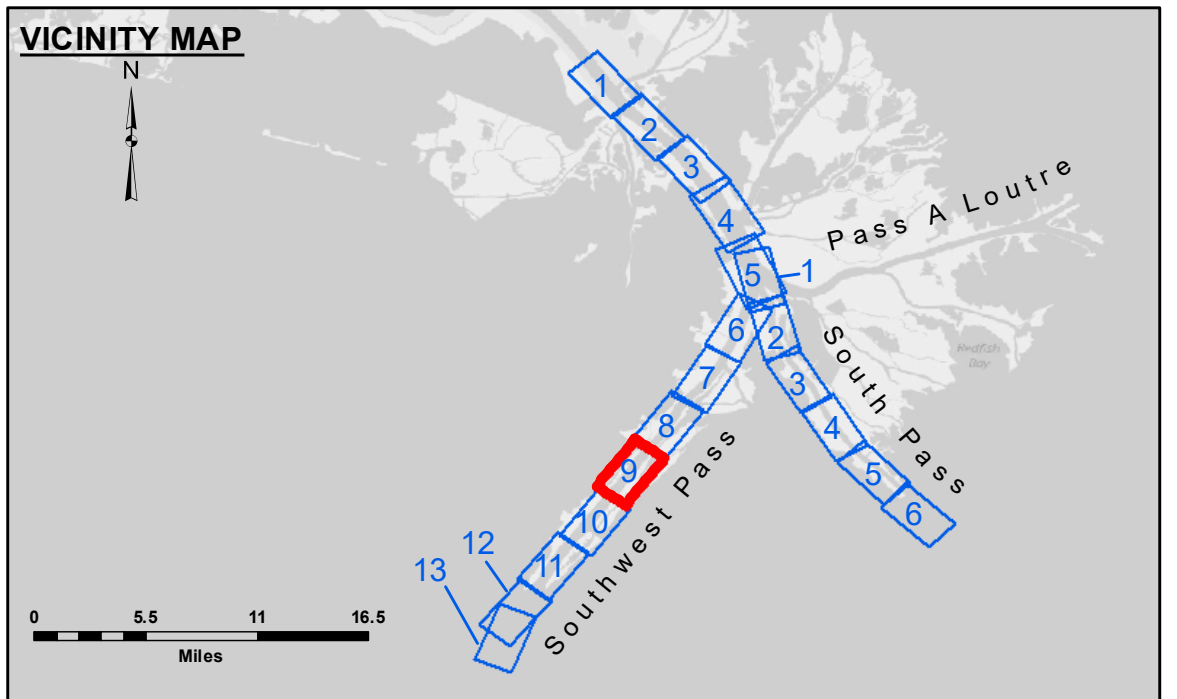


**DISCLAIMER**  
 The United States Government furnishes these data and the recipient accepts and uses them with the express understanding that they are not to be used for any purpose other than that for which they were prepared, and that the Government makes no warranty, expressed or implied, concerning the accuracy, completeness, reliability, usability, or suitability for any particular purpose of the information furnished hereunder. The user is responsible for the results obtained from the use of this information. The user agrees to indemnify and hold the United States Government harmless from all claims, damages, and expenses, including reasonable attorneys' fees, that may be asserted against or incurred by the United States Government or its employees, agents, or contractors, in connection with the use of this information. The user also agrees to release the United States Government from all claims, damages, and expenses, including reasonable attorneys' fees, that may be asserted against or incurred by the user or its employees, agents, or contractors, in connection with the use of this information. The information depicted on the map represents the results of a survey conducted on or before the date of the map. The user is responsible for the results of the survey. The user agrees to release the United States Government from all claims, damages, and expenses, including reasonable attorneys' fees, that may be asserted against or incurred by the user or its employees, agents, or contractors, in connection with the use of this information.

U.S. ARMY CORPS OF ENGINEERS NEW ORLEANS DISTRICT	
Submitted:	Chart Survey Section
Recommended:	Chart Survey Section
Approved:	Chart Waterways Maintenance Section
Surveyed By:	HNP & TDG
Plotted By:	RSL
Checked By:	MSK

**MISSISSIPPI RIVER - B.R. TO GULF  
 SOUTHWEST PASS - SHEET 9  
 SW\_09\_SWP\_20180506\_CS  
 06 May 2018**



<b>LEGEND</b>			
— Federal Navigation Channel	● Cable Area	□ Borrow Area	■ -10' and above
— Federal Navigation Center Line	■ Placement Area	● Shoalest Sounding**	■ -10' to -20'
— As-built Pipeline/Cable	□ Anchorage Area	☆ Beacon, General	■ -20' to -30'
..... Unconfirmed Pipeline/Cable	⊗ Obstruction Point	◆ Red Navigation Buoy	■ -30' to -40'
— Project Depth Contour	⚓ Wrecks-Submerged	◆ Green Navigation Buoy	■ -40' to -45'
			■ -45' to -48.5'
			■ -48.5' to -55'
			■ -55' and below

**Gage Reading:** 1.9 MLLW @ LIGHT 14 @ 1250  
**Sea Conditions:** CALM  
**Vessel Name:** BEAUVAIS  
**Survey Type:** CONDITION, SB  
**Sounding Frequency\*\*\*:** LOW

**Feet**  
 0 500 1,000 1,500 2,000 2,500

**NOTES:**  
 Horizontal Coordinate System: North American Datum of 1983 (NAD83), projected to the State Plane Coordinate System (SPCS), Louisiana South Zone. Distance units in U.S. Survey Feet.  
 Vertical Datum: Soundings are shown in feet and indicate depths below Mean Lower Low Water (MLLW, 07-11). Datum Relationships for gage 01625 as of July 2015: 0.0' NAVD83 = 0.39' MLLW = 3.89' MLG  
 Distances on the Mississippi River, above and below Head of Passes are shown at 1 mile intervals.  
 The location of navigation aids are base on and provided by the U.S. Coast Guard.  
 2016 Aerial Photography data source: Precision Aerial Reconnaissance, LLC (1998 DOQQ in green)  
 Reference is N.O.A. Navigation Chart No. 11361.  
 \*\* Shoalest Sounding per Quarter per Reach.  
 \*\*\* High frequency (200 kHz) survey data represents the first signal return at a sounding location and will include suspended solids, known as "fluff", if present. Low frequency (24 kHz) survey data normally penetrates through this "fluff" layer to depict elevations of consolidated bottom material. Low frequency accuracies may vary depending on channel conditions and fathometer settings.

**Sheet Reference Number**  
**9 of 13**  
 Revision Number: 3.13-20160811