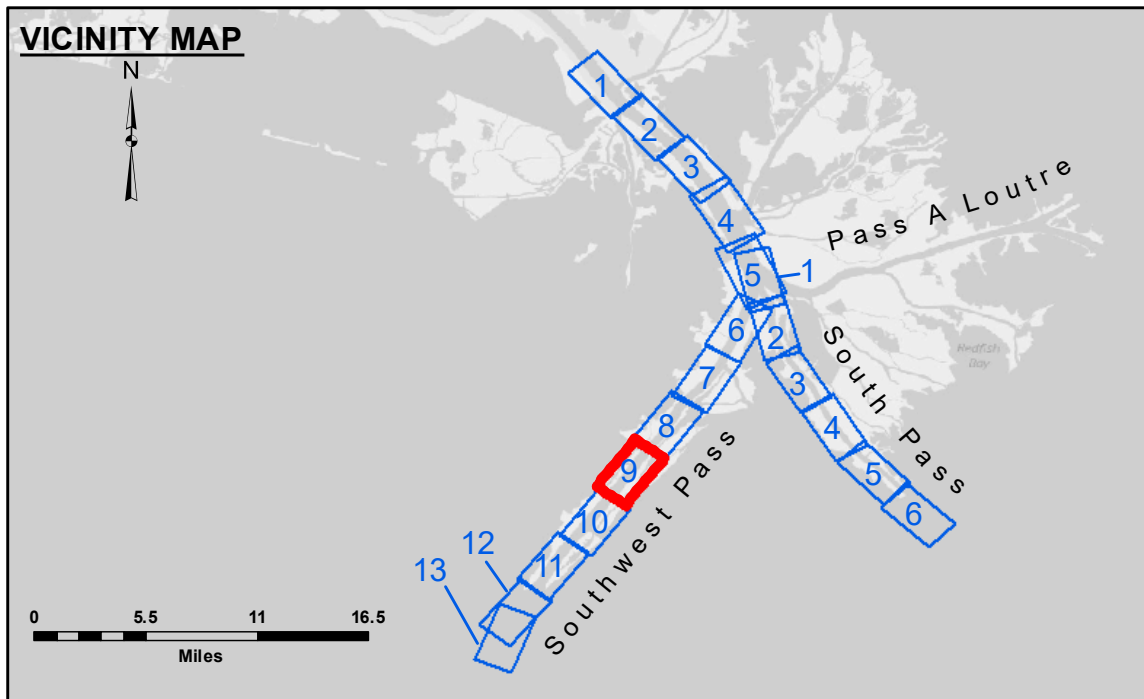


Access Constraints: The United States Government furnishes these data and the recipient accepts and uses them with the express understanding that the data are provided for informational purposes only and are not to be used for any purpose other than that for which they were originally intended. The user is responsible for the results and accuracy of any information derived from this data. The user is not to be held liable for any damages or losses, including but not limited to, property damage, personal injury, or death, resulting from the use of this data. The user is to be held liable for any damages or losses, including but not limited to, property damage, personal injury, or death, resulting from the use of this data. The user is to be held liable for any damages or losses, including but not limited to, property damage, personal injury, or death, resulting from the use of this data.

Table with columns: Submitted, Recommended, Approved, Surveyed By, Plotted By, Checked By. Values include: Submitted: [blank], Recommended: [blank], Approved: [blank], Surveyed By: LLB & SJR, Plotted By: TSS, Checked By: MSK.

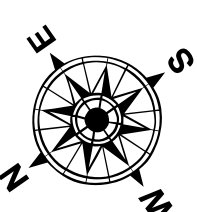
MISSISSIPPI RIVER - B.R. TO GULF  
SOUTHWEST PASS - SHEET 9  
SW\_09\_SWP\_20180927\_CS  
27 September 2018

Sheet Reference Number  
9 of 13

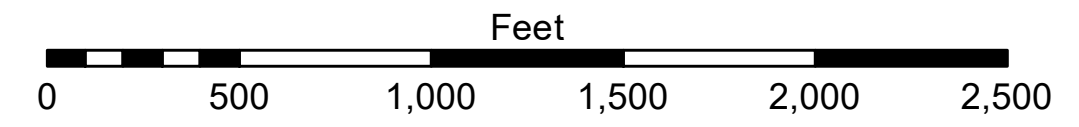


**LEGEND**

- - - Federal Navigation Channel	••• Cable Area	□ Borrow Area	■ -10' and above
— Federal Navigation Center Line	▭ Placement Area	● Shoalest Sounding**	■ -10' to -20'
— As-built Pipeline/Cable	⊗ Anchorage Area	☆ Beacon, General	■ -20' to -30'
..... Unconfirmed Pipeline/Cable	⊗ Obstruction Point	◆ Red Navigation Buoy	■ -30' to -40'
— Project Depth Contour	⚓ Wrecks-Submerged	◆ Green Navigation Buoy	■ -40' to -45'
			■ -45' to -48.5'
			■ -48.5' to -55'
			■ -55' and below



Gage Reading: 1.8 MLLW @ LIGHT-14 @ 1030  
Sea Conditions: CALM  
Vessel Name: TECHE  
Survey Type: CONDITION, SB  
Sounding Frequency\*\*\*: LOW



**NOTES:**  
Horizontal Coordinate System: North American Datum of 1983 (NAD83), projected to the State Plane Coordinate System (SPCS), Louisiana South Zone. Distance units in U.S. Survey Feet.  
Vertical Datum: Soundings are shown in feet and indicate depths below Mean Lower Low Water (MLLW, 07-11). Datum Relationships for gage 01625 as of July 2015: 0.0' NAVD83 = 0.39' MLLW = 3.89' MLG  
Distances on the Mississippi River, above and below Head of Passes are shown at 1 mile intervals.  
The location of navigation aids are base on and provided by the U.S. Coast Guard.  
2016 Aerial Photography data source: Precision Aerial Reconnaissance, LLC (1998 DOQQ in green)  
Reference is N.O.A. Navigation Chart No. 11361.  
\*\* Shoalest Sounding per Quarter per Reach.  
\*\*\* High frequency (200 kHz) survey data represents the first signal return at a sounding location and will include suspended solids, known as "fluff", if present. Low frequency (24 kHz) survey data normally penetrates through this "fluff" layer to depict elevations of consolidated bottom material. Low frequency accuracies may vary depending on channel conditions and fathometer settings.