

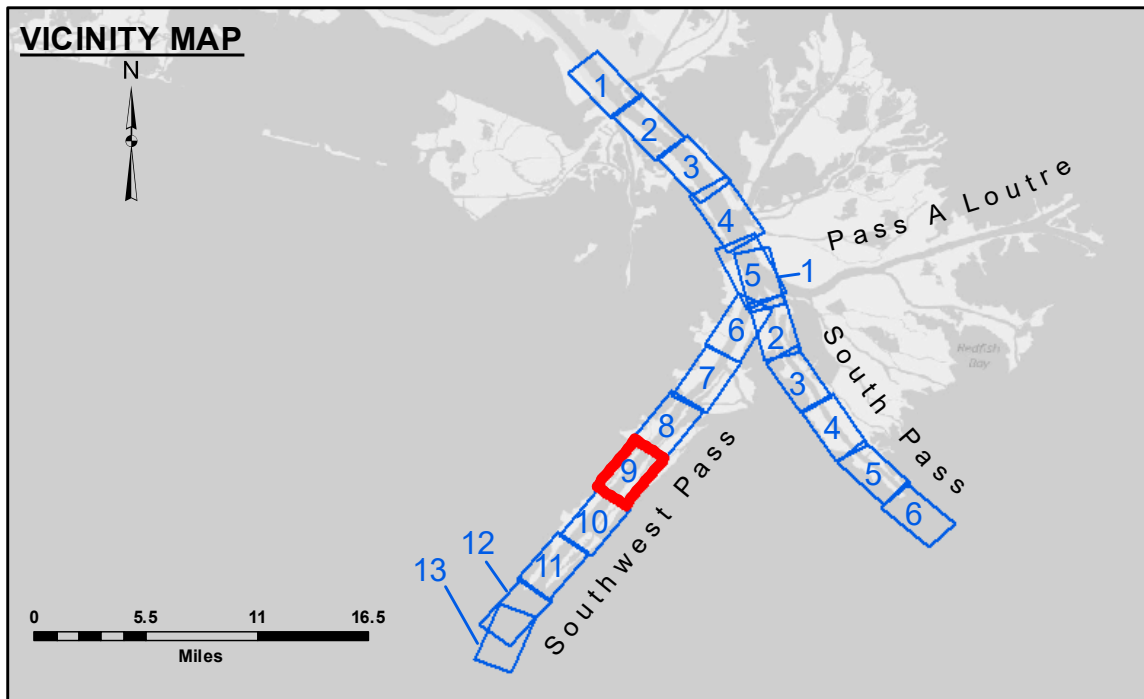
DREDGE NEWPORT
DREDGING RANGE 208-C TO RANGE 104-C
WEST TOE & 200' EAST OF THE WEST TOE
SHEETS 9 & 10



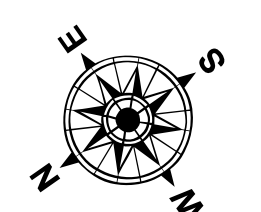
DISTRIBUTION STATEMENT: This information is for the use of the recipient only. It is not to be distributed outside the organization to which it is furnished, except as may be authorized in writing by the originator. It is not to be used for any purpose other than that for which it was prepared. It is not to be used as a basis for any action without the approval of the originator. It is not to be used as a basis for any claim against the United States or any other party.

| | |
|--------------|----------------------|
| Submitted: | Chart Survey Section |
| Recommended: | TSS |
| Approved: | MSK |

MISSISSIPPI RIVER - B. R. TO GULF
SOUTHWEST PASS - SHEET 9
SW_09_SWP_20181207_CS
07 December 2018



| LEGEND | | | |
|----------------------------------|---------------------|-------------------------|------------------|
| --- Federal Navigation Channel | ● Cable Area | □ Borrow Area | ■ -10' and above |
| — Federal Navigation Center Line | □ Placement Area | ● Shoalest Sounding** | ■ -10' to -20' |
| — As-built Pipeline/Cable | □ Anchorage Area | ★ Beacon, General | ■ -20' to -30' |
| Unconfirmed Pipeline/Cable | ⊗ Obstruction Point | ◆ Red Navigation Buoy | ■ -30' to -40' |
| — Project Depth Contour | ⚓ Wrecks-Submerged | ◆ Green Navigation Buoy | ■ -40' to -45' |
| | | | ■ -45' to -48.5' |
| | | | ■ -48.5' to -55' |
| | | | ■ -55' and below |



Gage Reading: 0.7 MLLW @ LIGHT-14 @ 0935
 Sea Conditions: CALM, HEAVY FLUFF
 Vessel Name: JOHN BOPP
 Survey Type: CONDITION, SB
 Sounding Frequency***: LOW

Feet

0 500 1,000 1,500 2,000 2,500

NOTES:
 Horizontal Coordinate System: North American Datum of 1983 (NAD83), projected to the State Plane Coordinate System (SPCS), Louisiana South Zone. Distance units in U.S. Survey Feet.
 Vertical Datum: Soundings are shown in feet and indicate depths below Mean Lower Low Water (MLLW, 07-11). Datum Relationships for gage 01625 as of July 2015: 0.0' NAVD83 = 0.39' MLLW = 3.89' MLG
 Distances on the Mississippi River, above and below Head of Passes are shown at 1 mile intervals.
 The location of navigation aids are base on and provided by the U.S. Coast Guard.
 2016 Aerial Photography data source: Precision Aerial Reconnaissance, LLC (1998 DOQQ in green)
 Reference is N.O.A. Navigation Chart No. 11361.
 ** Shoalest Sounding per Quarter per Reach.
 *** High frequency (200 kHz) survey data represents the first signal return at a sounding location and will include suspended solids, known as "fluff", if present. Low frequency (24 kHz) survey data normally penetrates through this "fluff" layer to depict elevations of consolidated bottom material. Low frequency accuracies may vary depending on channel conditions and fathometer settings.

Sheet Reference Number
9 of 13

Revision Number:
 3.13-20160811