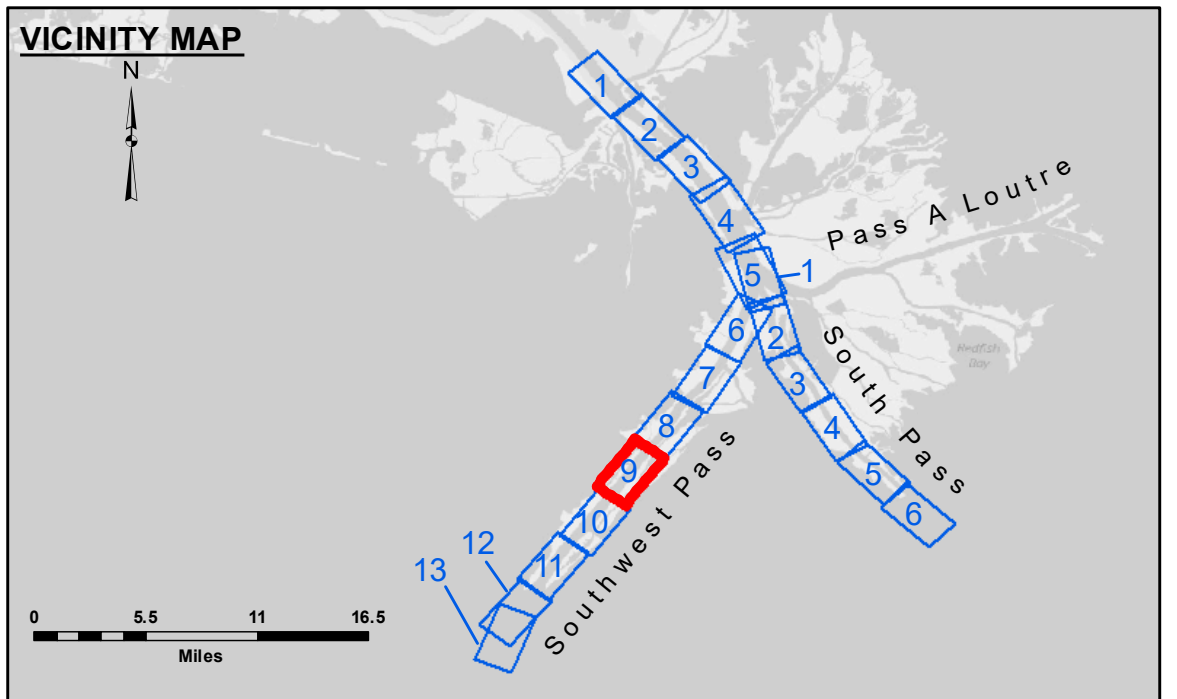


3,922,000  
200,000  
3,919,000

185,000  
3,913,000  
188,000  
3,910,000



**LEGEND**

--- Federal Navigation Channel	● Cable Area	□ Borrow Area	■ -10' and above
— Federal Navigation Center Line	■ Placement Area	● Shoalest Sounding**	■ -10' to -20'
— As-built Pipeline/Cable	□ Anchorage Area	★ Beacon, General	■ -20' to -30'
..... Unconfirmed Pipeline/Cable	⊗ Obstruction Point	◆ Red Navigation Buoy	■ -30' to -40'
— Project Depth Contour	★ Wrecks-Submerged	◆ Green Navigation Buoy	■ -40' to -45'
			■ -45' to -48.5'
			■ -48.5' to -55'
			■ -55' and below

Gage Reading: 2.1 MLLW @ LIGHT-14 @ 1000  
 Sea Conditions: CHOPPY  
 Vessel Name: BLANCHARD  
 Survey Type: CONDITION, SB  
 Sounding Frequency\*\*\*: LOW

Vertical Datum:  
 Soundings are shown in feet and indicate depths below Mean Lower Low Water (MLLW, 07-11).  
 Datum Relationships for gage 01625 as of July 2015:  
 0.0' NAVD83 = 0.39' MLLW = 3.89' MLG

Distances on the Mississippi River, above and below Head of Passes are shown at 1 mile intervals.

The location of navigation aids are base on and provided by the U.S. Coast Guard.

2016 Aerial Photography data source: Precision Aerial Reconnaissance, LLC (1998 DOQQ in green)

Reference is N.O.A. Navigation Chart No. 11361.

\*\* Shoalest Sounding per Quarter per Reach.

\*\*\* High frequency (200 kHz) survey data represents the first signal return at a sounding location and will include suspended solids, known as "fluff", if present. Low frequency (24 kHz) survey data normally penetrates through this "fluff" layer to depict elevations of consolidated bottom material. Low frequency accuracies may vary depending on channel conditions and fathometer settings.

**NOTES:**

Horizontal Coordinate System: North American Datum of 1983 (NAD83), projected to the State Plane Coordinate System (SPCS), Louisiana South Zone. Distance units in U.S. Survey Feet.

Vertical Datum: Soundings are shown in feet and indicate depths below Mean Lower Low Water (MLLW, 07-11). Datum Relationships for gage 01625 as of July 2015: 0.0' NAVD83 = 0.39' MLLW = 3.89' MLG

Distances on the Mississippi River, above and below Head of Passes are shown at 1 mile intervals.

The location of navigation aids are base on and provided by the U.S. Coast Guard.

2016 Aerial Photography data source: Precision Aerial Reconnaissance, LLC (1998 DOQQ in green)

Reference is N.O.A. Navigation Chart No. 11361.

\*\* Shoalest Sounding per Quarter per Reach.

\*\*\* High frequency (200 kHz) survey data represents the first signal return at a sounding location and will include suspended solids, known as "fluff", if present. Low frequency (24 kHz) survey data normally penetrates through this "fluff" layer to depict elevations of consolidated bottom material. Low frequency accuracies may vary depending on channel conditions and fathometer settings.



**DISCLAIMER**

Access Constraints: The United States Government furnishes this data and the recipient accepts and uses them with the express understanding that the data is not to be used for any purpose other than that for which it was originally prepared. The user is responsible for the results and accuracy of any data derived from this data. The user is not to be held responsible for any damage or injury resulting from the use of this data. The user is not to be held responsible for any damage or injury resulting from the use of this data.

**PLANS NOTES**

This information depicted on the map represents the results of a survey conducted on or about the date shown. It is not to be used for any purpose other than that for which it was originally prepared. The user is responsible for the results and accuracy of any data derived from this data. The user is not to be held responsible for any damage or injury resulting from the use of this data.

U.S. ARMY CORPS OF ENGINEERS NEW ORLEANS DISTRICT		
Submitted:	Checked By:	MSK
Recommended:	Checked By:	MSK
Approved:	Checked By:	MSK

**MISSISSIPPI RIVER - B.R. TO GULF  
SOUTHWEST PASS - SHEET 9  
SW\_09\_SWP\_20190501\_CS  
01 May 2019**

**Sheet Reference Number  
9 of 13**

Revision Number:  
3.13-20160811