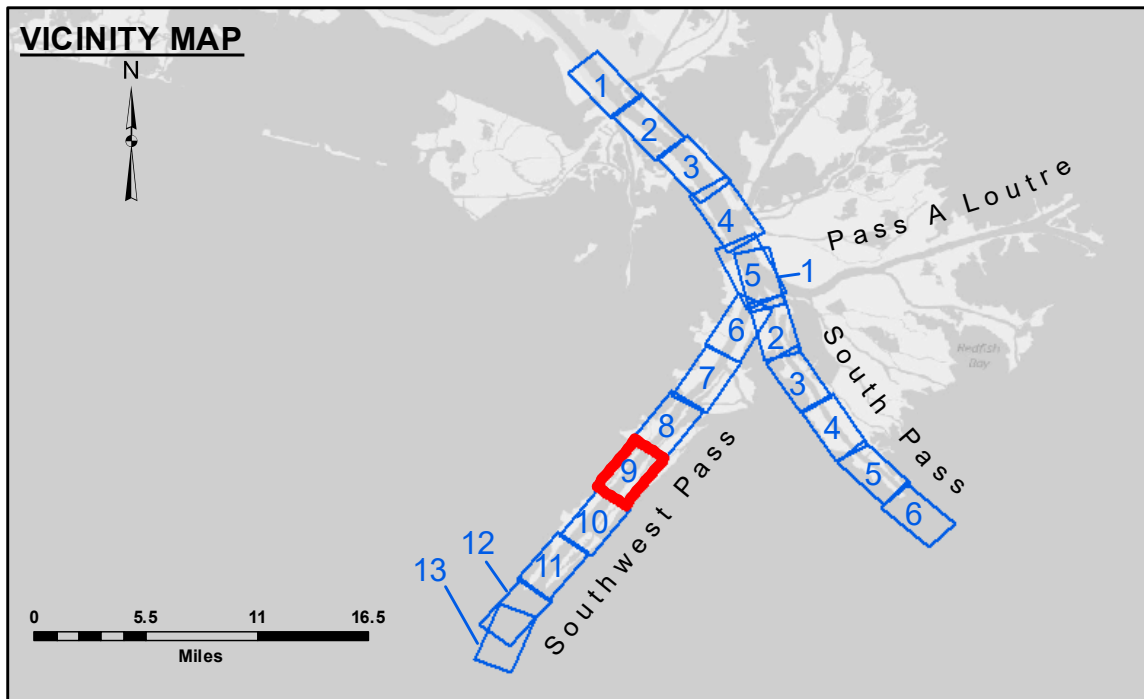


Accession: The United States Government furnishes these data and the recipient accepts and uses them with the express understanding that the data are not to be distributed, reproduced, or used in any manner for any purpose other than that for which they were originally prepared, and that the user is responsible for the results and accuracy of any information derived therefrom.

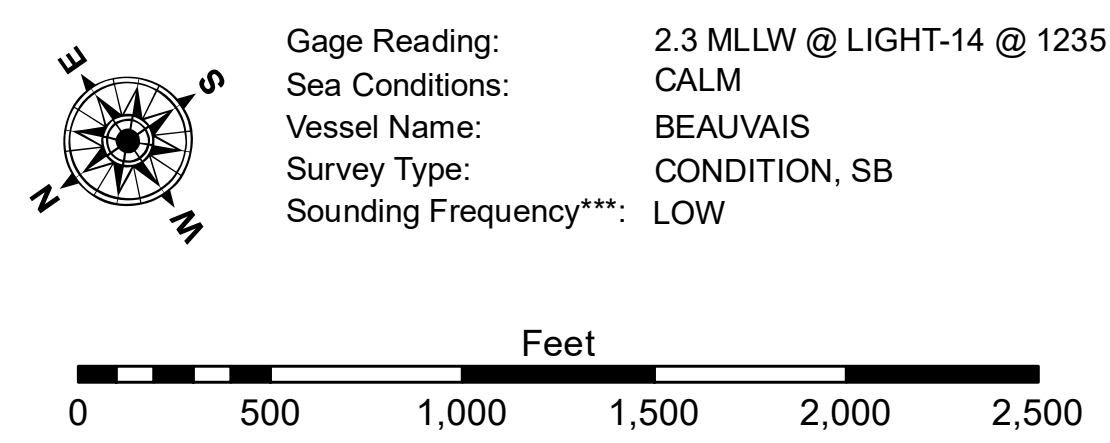
Disclaimer: The information depicted on this map represents the results of a survey conducted on or about the date shown on the map. The information is not to be used for any purpose other than that for which it was originally prepared. The user is responsible for the results and accuracy of any information derived therefrom.

Submitted:	Chart Survey Section
Recommended:	Chart Survey Section
Approved:	Chart Waterways Maintenance Section
Surveyed By:	LLB & MGF
Plotted By:	TSS
Checked By:	MSK

MISSISSIPPI RIVER - B.R. TO GULF
SOUTHWEST PASS - SHEET 9
SW_09_SWP_20190529_CS
29 May 2019



LEGEND	
--- Federal Navigation Channel	● Cable Area
— Federal Navigation Center Line	□ Placement Area
— As-built Pipeline/Cable	□ Anchorage Area
..... Unconfirmed Pipeline/Cable	⊗ Obstruction Point
— Project Depth Contour	★ Wrecks-Submerged
□ Borrow Area	★ Beacon, General
● Shoalest Sounding**	◆ Red Navigation Buoy
◆ Green Navigation Buoy	



NOTES:
 Horizontal Coordinate System: North American Datum of 1983 (NAD83), projected to the State Plane Coordinate System (SPCS), Louisiana South Zone. Distance units in U.S. Survey Feet.
 Vertical Datum: Soundings are shown in feet and indicate depths below Mean Lower Low Water (MLLW, 07-11). Datum Relationships for gage 01625 as of July 2015: 0.0' NAVD83 = 0.39' MLLW = 3.89' MLG
 Distances on the Mississippi River, above and below Head of Passes are shown at 1 mile intervals.
 The location of navigation aids are base on and provided by the U.S. Coast Guard.
 2016 Aerial Photography data source: Precision Aerial Reconnaissance, LLC (1998 DOQQ in green)
 Reference is N.O.A. Navigation Chart No. 11361.
 ** Shoalest Sounding per Quarter per Reach.
 *** High frequency (200 kHz) survey data represents the first signal return at a sounding location and will include suspended solids, known as "fluff", if present. Low frequency (24 kHz) survey data normally penetrates through this "fluff" layer to depict elevations of consolidated bottom material. Low frequency accuracies may vary depending on channel conditions and fathometer settings.

Sheet Reference Number
9 of 13
 Revision Number: 3.13-20160811