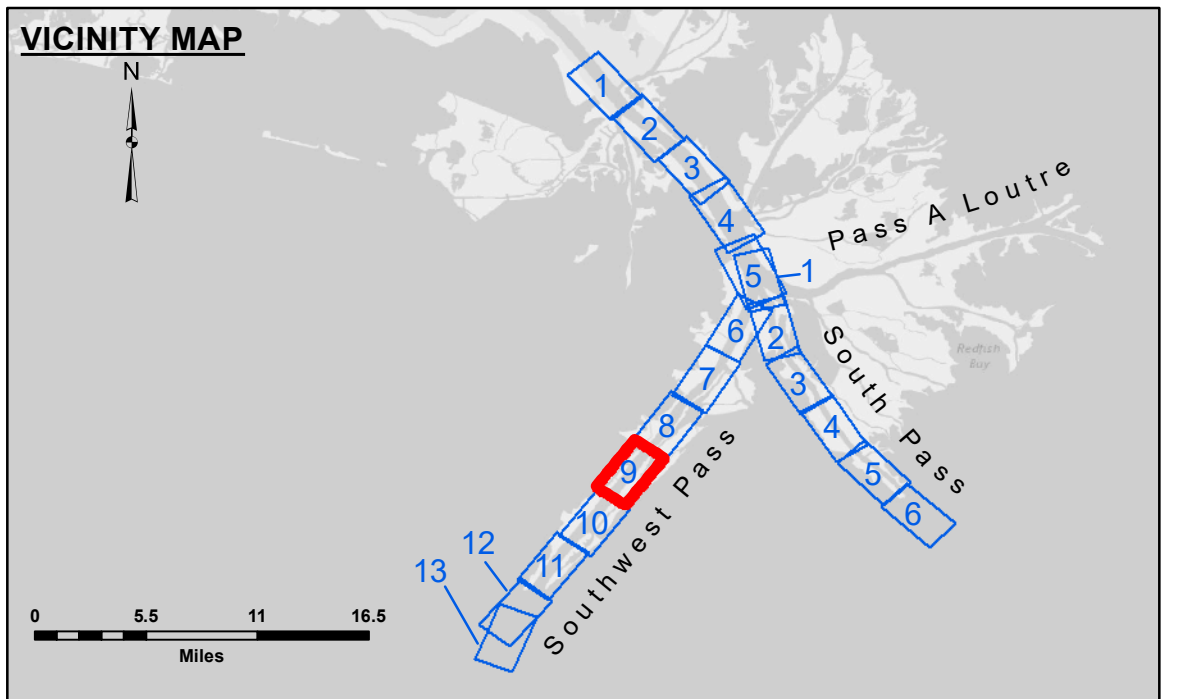


DISCLAIMER
 The United States Government furnishes these data and the recipient accepts and uses them with the express understanding that the data are not intended for any purpose other than that for which they were prepared, and that the data are not to be used for any other purpose without the express written consent of the United States Government. The user is responsible for the results of any use of the data for other than the intended purpose.
 The information depicted on this map represents the results of a hydrographic survey which was conducted under the authority of the Army Corps of Engineers. The Corps of Engineers does not warrant the accuracy of the data or the results of any use of the data for other than the intended purpose. The user is responsible for the results of any use of the data for other than the intended purpose. The information depicted on this map represents the results of a hydrographic survey which was conducted under the authority of the Army Corps of Engineers. The Corps of Engineers does not warrant the accuracy of the data or the results of any use of the data for other than the intended purpose. The user is responsible for the results of any use of the data for other than the intended purpose.

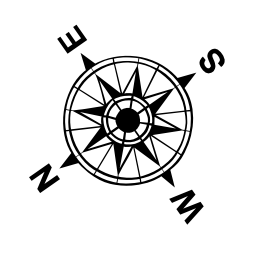
Submitted:	Surveyed By:
Recommended:	JTB & DED
Approved:	Plotted By:
Chief, Survey Section	TSS
Chief, Waterways Maintenance Section	Checked By:
	MSK

MISSISSIPPI RIVER - B. R. TO GULF
SOUTHWEST PASS - SHEET 9
SW_09_SWP_20200430_CS_PRO
30 April 2020

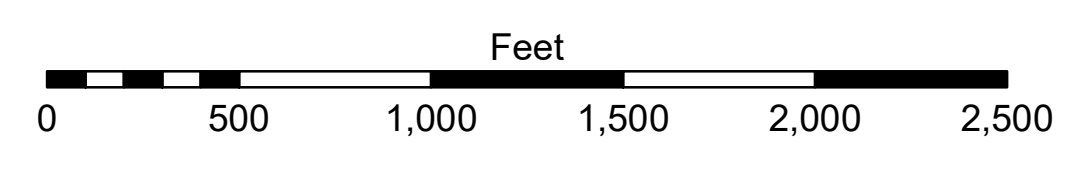


LEGEND

--- Federal Navigation Channel	● Cable Area	□ Borrow Area	■ -10' and above
— Federal Navigation Center Line	□ Placement Area	● Shoalest Sounding**	■ -10' to -20'
— As-built Pipeline/Cable	□ Anchorage Area	★ Beacon, General	■ -20' to -30'
..... Unconfirmed Pipeline/Cable	⊗ Obstruction Point	◆ Red Navigation Buoy	■ -30' to -40'
— Project Depth Contour	⚓ Wrecks-Submerged	◆ Green Navigation Buoy	■ -40' to -45'
			■ -45' to -48.5'
			■ -48.5' to -55'
			■ -55' and below



Gage Reading: 2.4 MLLW @ LIGHT 14 @ 1230
 Sea Conditions: CHOPPY
 Vessel Name: BLANCHARD
 Survey Type: CONDITION, SB
 Sounding Frequency***: LOW



NOTES:
 Horizontal Coordinate System: North American Datum of 1983 (NAD83), projected to the State Plane Coordinate System (SPCS), Louisiana South Zone. Distance units in U.S. Survey Feet.
 Vertical Datum: Soundings are shown in feet and indicate depths below Mean Lower Low Water (MLLW, 07-11). Datum Relationships for gage 01625 as of July 2015: 0.0' NAVD86 = 0.39' MLLW = 3.89' MLLG
 Distances on the Mississippi River, above and below Head of Passes are shown at 1 mile intervals.
 The location of navigation aids are base on and provided by the U.S. Coast Guard.
 2016 Aerial Photography data source: Precision Aerial Reconnaissance, LLC (1998 DOQQ in green)
 Reference is N.O.A. Navigation Chart No. 11361.
 ** Shoalest Sounding per Quarter Per Reach.
 *** High frequency (200 kHz) survey data represents the first signal return at a sounding location and will include suspended solids, known as "fluff", if present. Low frequency (24 kHz) survey data normally penetrates through this "fluff" layer to depict elevations of consolidated bottom material. Low frequency accuracies may vary depending on channel conditions and fathometer settings.

Sheet Reference Number
9 of 13

Revision Number: 4.0-20190702