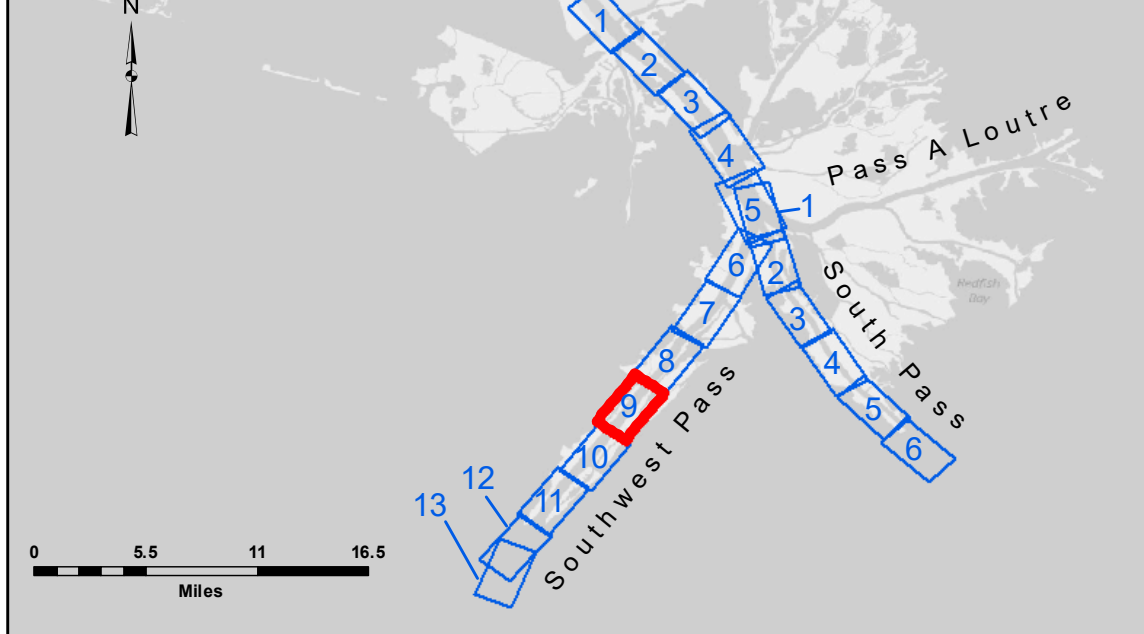


3,922,000

200,000

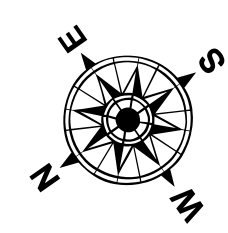
3,919,000

VICINITY MAP

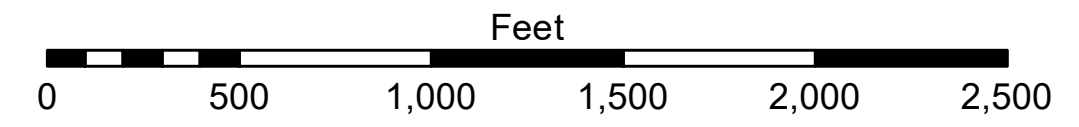


LEGEND

Federal Navigation Channel	Cable Area	Borrow Area	-10' and above
Federal Navigation Center Line	Placement Area	Shoalest Sounding**	-10' to -20'
As-built Pipeline/Cable	Anchorage Area	Beacon, General	-20' to -30'
Unconfirmed Pipeline/Cable	Obstruction Point	Red Navigation Buoy	-30' to -40'
Project Depth Contour	Wrecks-Submerged	Green Navigation Buoy	-40' to -45'
			-45' to -48.5'
			-48.5' to -55'
			-55' and below



Gage Reading: 2.0 MLLW @ LIGHT 14 @ 1120
 Sea Conditions: CALM
 Vessel Name: TECHE
 Survey Type: CONDITION, SB
 Sounding Frequency***: LOW



NOTES:
 Horizontal Coordinate System: North American Datum of 1983 (NAD83), projected to the State Plane Coordinate System (SPCS), Louisiana South Zone. Distance units in U.S. Survey Feet.
 Vertical Datum: Soundings are shown in feet and indicate depths below Mean Lower Low Water (MLLW, 07-11). Datum Relationships for gage 01625 as of July 2015: 0.0' NAVD88 = 0.39' MLLW = 3.89' MLLG
 Distances on the Mississippi River, above and below Head of Passes are shown at 1 mile intervals.
 The location of navigation aids are base on and provided by the U.S. Coast Guard.
 2016 Aerial Photography data source: Precision Aerial Reconnaissance, LLC (1998 DOQQ in green)
 Reference is N.O.A. Navigation Chart No. 11361.
 ** Shoalest Sounding per Quarter per Reach.
 *** High frequency (200 kHz) survey data represents the first signal return at a sounding location and will include suspended solids, known as "fluff", if present. Low frequency (24 kHz) survey data normally penetrates through this "fluff" layer to depict elevations of consolidated bottom material. Low frequency accuracies may vary depending on channel conditions and fathometer settings.



DISCLAIMER:
 The information depicted on this map represents the results of a survey conducted by the United States Government and its contractors. The United States Government and its contractors do not warrant the accuracy, reliability, or completeness of the information. The user is responsible for the use of the information for the purposes intended. The user is responsible for the use of the information for the purposes intended. The user is responsible for the use of the information for the purposes intended.
 The information depicted on this map represents the results of a survey conducted by the United States Government and its contractors. The United States Government and its contractors do not warrant the accuracy, reliability, or completeness of the information. The user is responsible for the use of the information for the purposes intended. The user is responsible for the use of the information for the purposes intended. The user is responsible for the use of the information for the purposes intended.

U.S. ARMY CORPS OF ENGINEERS NEW ORLEANS DISTRICT	
Submitted:	Checked By: MSK
Recommended:	Checked By: MSK
Approved:	Checked By: MSK
Surveyed By: JH & SJR	Plotted By: LLB

**MISSISSIPPI RIVER - B.R. TO GULF
 SOUTHWEST PASS - SHEET 9
 SW_09_SWP_20200617_CS
 17 June 2020**

**Sheet Reference Number
 9 of 13**

Revision Number:
 4.1-20191105