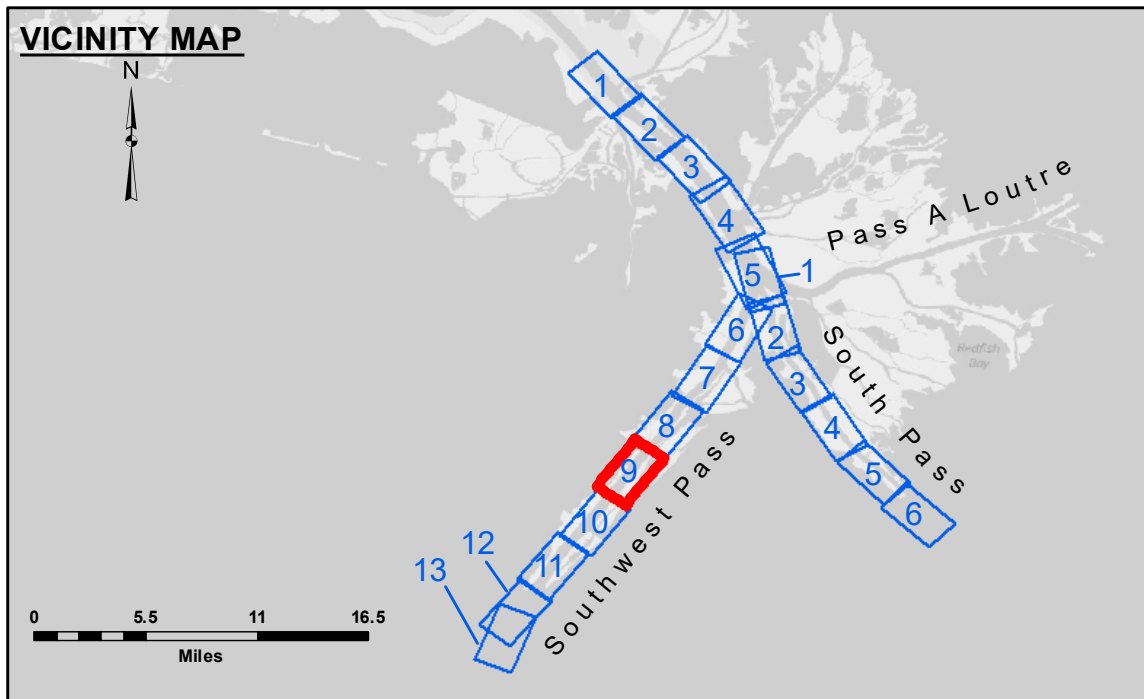


Access Constraints: The United States Government furnishes these data and the recipient accepts and uses them with the express understanding that they are not to be retransmitted, reproduced, expressed, or implied concerning the accuracy, completeness, reliability, usability, or suitability for any particular purpose of the recipient. The user is responsible for the results and accuracy of the information obtained from this data. The user shall not be held liable for any damages or losses incurred by the user, either directly or indirectly, arising from the use of this data. The user shall not be held liable for any damages or losses incurred by the user, either directly or indirectly, arising from the use of this data. The user shall not be held liable for any damages or losses incurred by the user, either directly or indirectly, arising from the use of this data.

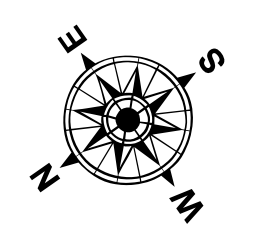
U.S. ARMY CORPS OF ENGINEERS NEW ORLEANS DISTRICT		
Submitted:	Surveyed By: JH & RCC	Checked By: MSK
Recommended:	Plotted By: LLB	
Approved:	Chief Survey Section	Chief Waterways Maintenance Section

**MISSISSIPPI RIVER - B.R. TO GULF
SOUTHWEST PASS - SHEET 9
SW_09_SWP_20201015_CS
15 October 2020**

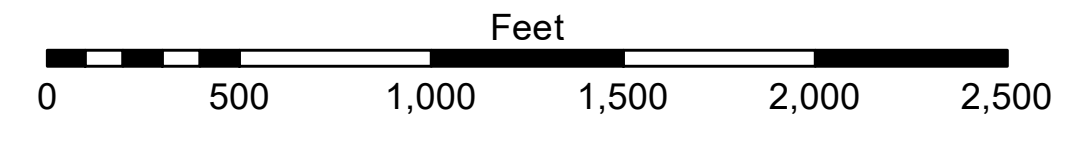


LEGEND

Federal Navigation Channel	Cable Area	Borrow Area	-10' and above
Federal Navigation Center Line	Placement Area	Shoalest Sounding**	-10' to -20'
As-built Pipeline/Cable	Anchorage Area	Beacon, General	-20' to -30'
Unconfirmed Pipeline/Cable	Obstruction Point	Red Navigation Buoy	-30' to -40'
Project Depth Contour	Wrecks-Submerged	Green Navigation Buoy	-40' to -45'
			-45' to -48.5'
			-48.5' to -55'
			-55' and below



Gage Reading: 1.90 MLLW @ LIGHT 14 @ 710
 Sea Conditions: CALM
 Vessel Name: JOHN BOPP
 Survey Type: CONDITION, SB
 Sounding Frequency***: LOW



NOTES:
 Horizontal Coordinate System: North American Datum of 1983 (NAD83), projected to the State Plane Coordinate System (SPCS), Louisiana South Zone. Distance units in U.S. Survey Feet.
 Vertical Datum: Soundings are shown in feet and indicate depths below Mean Lower Low Water (MLLW, 07-11). Datum Relationships for gage 01625 as of July 2015: 0.0' NAVD86 = 0.39' MLLW = 3.89' MLLG
 Distances on the Mississippi River, above and below Head of Passes are shown at 1 mile intervals.
 The location of navigation aids are base on and provided by the U.S. Coast Guard.
 2016 Aerial Photography data source: Precision Aerial Reconnaissance, LLC (1998 DOQQ in green)
 Reference is N.O.A. Navigation Chart No. 11361.
 ** Shoalest Sounding per Quarter per Reach.
 *** High frequency (200 kHz) survey data represents the first signal return at a sounding location and will include suspended solids, known as "fluff", if present. Low frequency (24 kHz) survey data normally penetrates through this "fluff" layer to depict elevations of consolidated bottom material. Low frequency accuracies may vary depending on channel conditions and bathymeter settings.

**Sheet
Reference
Number
9 of 13**
 Revision Number:
4.1-20191105