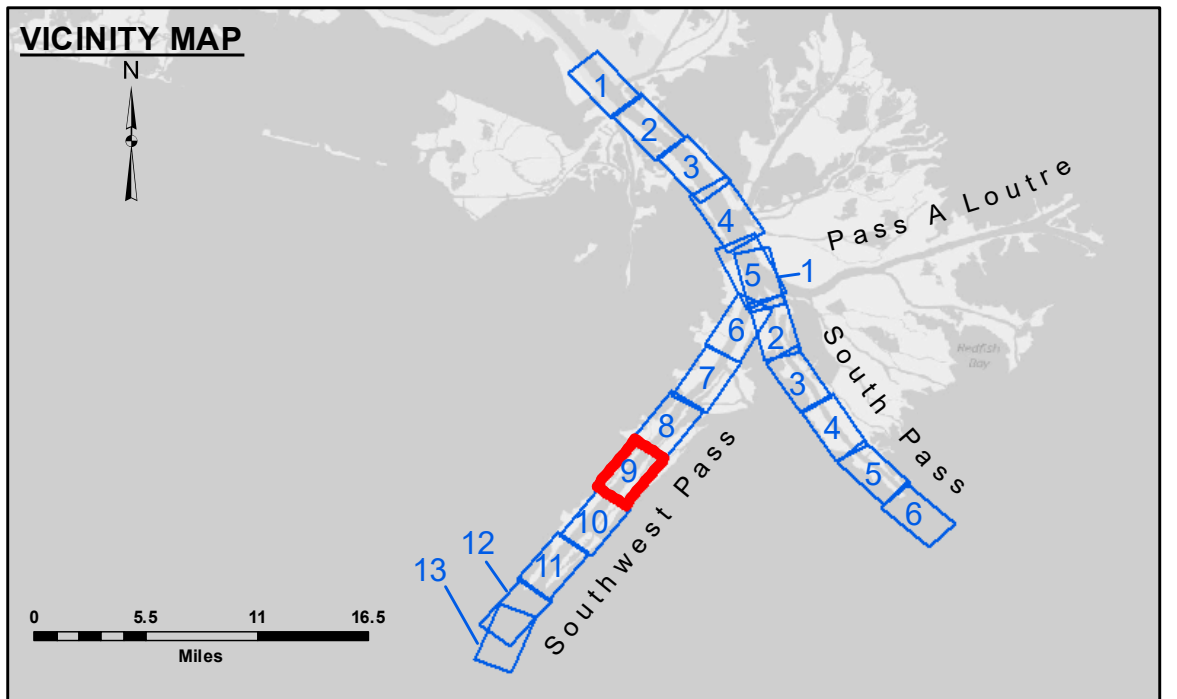


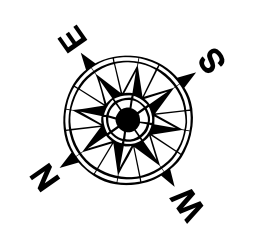
**DISCLAIMER**  
 The information depicted on this map represents the results of a survey conducted by the United States Government. The user of this information is advised that the United States Government does not warrant the accuracy, reliability, or availability of this information for any purpose other than that for which it was prepared. The user is responsible for the results of any use of this information. The user is also advised that the United States Government does not accept any liability for any damage or loss, whether direct or indirect, resulting from the use of this information. The user is advised that the United States Government does not accept any liability for any damage or loss, whether direct or indirect, resulting from the use of this information. The user is advised that the United States Government does not accept any liability for any damage or loss, whether direct or indirect, resulting from the use of this information.

Submitted:	Chart Survey Section
Recommended:	Chart Survey Section
Approved:	Chart Waterways Maintenance Section
Surveyed By:	JH & RCC
Plotted By:	LLB
Checked By:	MSK

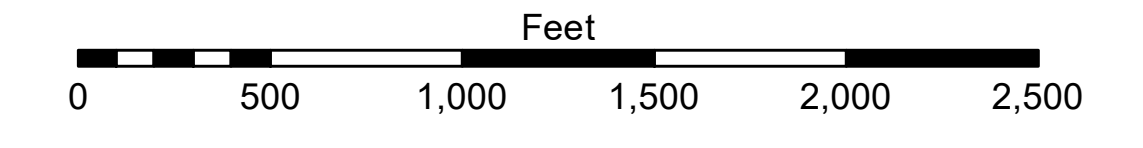
**MISSISSIPPI RIVER - B.R. TO GULF**  
**SOUTHWEST PASS - SHEET 9**  
**SW\_09\_SWP\_20201203\_CS**  
**03 December 2020**



LEGEND			
--- Federal Navigation Channel	○ Cable Area	□ Borrow Area	■ -10' and above
— Federal Navigation Center Line	□ Placement Area	● Shoalest Sounding**	■ -10' to -20'
— As-built Pipeline/Cable	□ Anchorage Area	☆ Beacon, General	■ -20' to -30'
..... Unconfirmed Pipeline/Cable	⊗ Obstruction Point	◆ Red Navigation Buoy	■ -30' to -40'
— Project Depth Contour	⚓ Wrecks-Submerged	◆ Green Navigation Buoy	■ -40' to -45'
			■ -45' to -48.5'
			■ -48.5' to -55'
			■ -55' and below



Gage Reading: 0.5 MLLW @ LIGHT 14 @ 0930  
 Sea Conditions: CALM  
 Vessel Name: BLANCHARD  
 Survey Type: CONDITION, SB  
 Sounding Frequency\*\*\*: LOW



**NOTES:**  
 Horizontal Coordinate System: North American Datum of 1983 (NAD83), projected to the State Plane Coordinate System (SPCS), Louisiana South Zone. Distance units in U.S. Survey Feet.  
 Vertical Datum: Soundings are shown in feet and indicate depths below Mean Lower Low Water (MLLW, 07-11). Datum Relationships for gage 01625 as of July 2015: 0.0' NAVD83 = 0.39' MLLW = 3.89' MLG  
 Distances on the Mississippi River, above and below Head of Passes are shown at 1 mile intervals.  
 The location of navigation aids are base on and provided by the U.S. Coast Guard.  
 2016 Aerial Photography data source: Precision Aerial Reconnaissance, LLC (1998 DOQQ in green)  
 Reference is N.O.A. Navigation Chart No. 11361.  
 \*\* Shoalest Sounding per Quarter per Reach.  
 \*\*\* High frequency (200 kHz) survey data represents the first signal return at a sounding location and will include suspended solids, known as "fluff", if present. Low frequency (24 kHz) survey data normally penetrates through this "fluff" layer to depict elevations of consolidated bottom material. Low frequency accuracies may vary depending on channel conditions and fathometer settings.

**Sheet Reference Number**  
**9 of 13**  
 Revision Number:  
 4.1-20191105