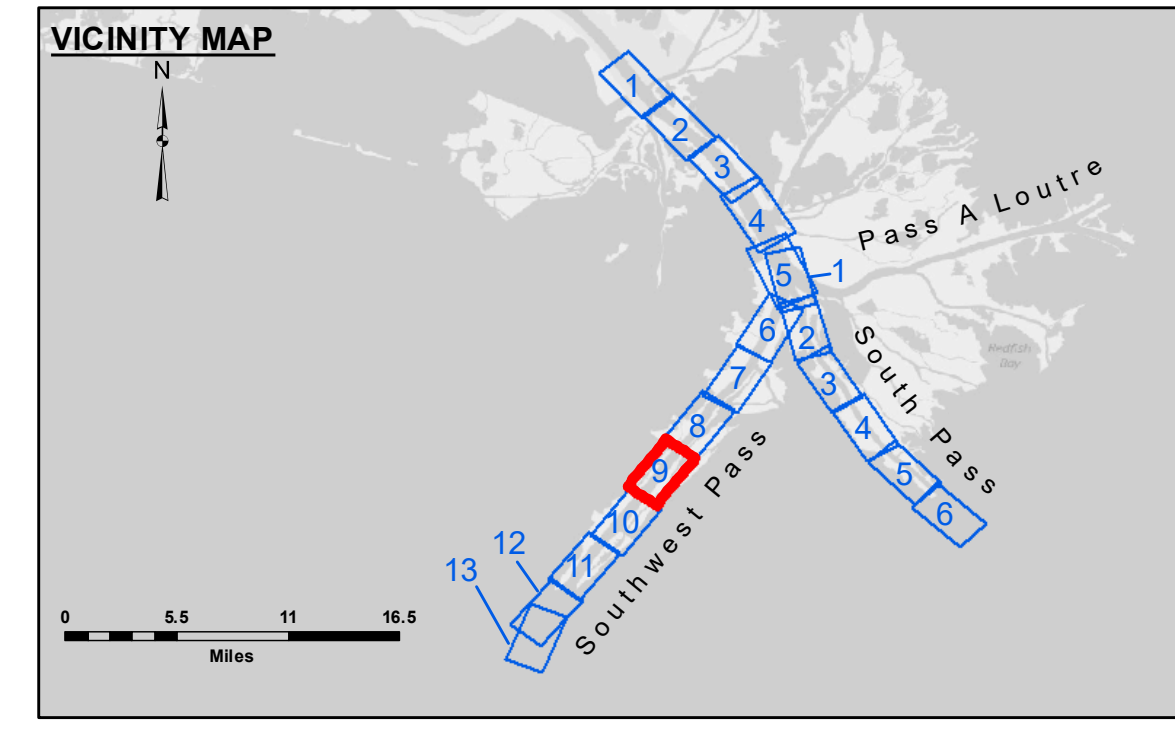
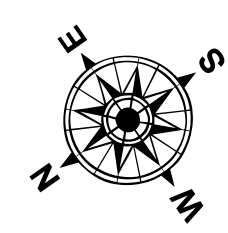


DREDGE STUYVESANT
DREDGING STATION 615+00 TO STATION 690+00
FULL CHANNEL WIDTH



LEGEND			
	Federal Navigation Channel		Cable Area
	Federal Navigation Center Line		Placement Area
	As-built Pipeline/Cable		Borrow Area
	Unconfirmed Pipeline/Cable		Shoalest Sounding**
	Project Depth Contour		Beacon, General
	Obstruction Point		Red Navigation Buoy
	Wrecks-Submerged		Green Navigation Buoy
			-10' and above
			-10' to -20'
			-20' to -30'
			-30' to -40'
			-40' to -45'
			-45' to -50'
			-50' to -55'
			-55' and below



Gage Reading: 2.4 MLLW @ LIGHT 14 @ 1005
 Sea Conditions: CHOPPY
 Vessel Name: BLANCHARD
 Survey Type: CONDITION, SB
 Sounding Frequency***: LOW



NOTES:
 Horizontal Coordinate System: North American Datum of 1983 (NAD83), projected to the State Plane Coordinate System (SPCS), Louisiana South Zone. Distance units in U.S. Survey Feet.
 Vertical Datum: Soundings are shown in feet and indicate depths below Mean Lower Low Water (MLLW, 12-16). Datum Relationships for gage 01625 as of March 2020: 0.0' NAVD88, 2009.55 = 0.40' MLLW = 3.90' MLG
 Distances on the Mississippi River, above and below Head of Passes are shown at 1 mile intervals.
 The location of navigation aids are base on and provided by the U.S. Coast Guard.
 2016 Aerial Photography data source: Precision Aerial Reconnaissance, LLC (1998 DOQQ in green)
 Reference is N.O.A. Navigation Chart No. 11361.
 ** Shoalest Sounding per Quarter per Reach.
 *** High frequency (200 kHz) survey data represents the first signal return at a sounding location and will include suspended solids, known as "fluff", if present. Low frequency (24 kHz) survey data normally penetrates through this "fluff" layer to depict elevations of consolidated bottom material. Low frequency accuracies may vary depending on channel conditions and fathometer settings.



Access Constraints: The United States Government furnishes these data and the recipient accepts and uses them with the express understanding that the information is for planning purposes only. It is not to be used for navigation, or any other purpose for which it was not intended, without the express written permission of the United States Government. The user is responsible for the accuracy, reliability, usability, or suitability for any particular purpose of the information. The information is provided as is, without warranty of any kind, either express or implied. The user is responsible for the accuracy, reliability, usability, or suitability for any particular purpose of the information. The information is provided as is, without warranty of any kind, either express or implied. The user is responsible for the accuracy, reliability, usability, or suitability for any particular purpose of the information.

U.S. ARMY CORPS OF ENGINEERS NEW ORLEANS DISTRICT		
Submitted:	Surveyed By: JTB & DBD	Checked By: MSK
Recommended:	Plotted By: TSS	
Approved:	Chart Survey Section	Chart Waterways Maintenance Section

**MISSISSIPPI RIVER - B.R. TO GULF
 SOUTHWEST PASS - SHEET 9
 SW_09_SWP_20210414_CS
 14 April 2021**

**Sheet Reference Number
 9 of 13**

Revision Number:
 4.1-20191105