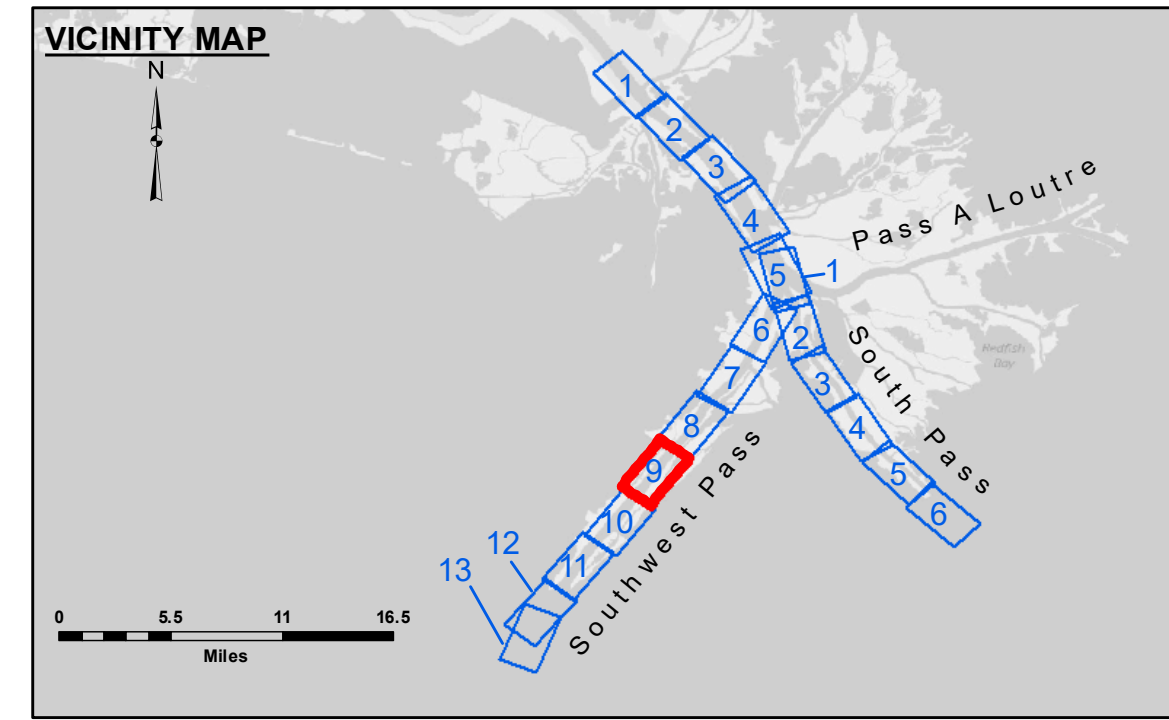


3,922,000
3,919,000
200,000
3,916,000
185,000
3,913,000
185,000
3,910,000



LEGEND

— Federal Navigation Channel	○ Cable Area	□ Borrow Area	■ -10' and above
— Federal Navigation Center Line	□ Placement Area	● Shoalest Sounding**	■ -10' to -20'
— As-built Pipeline/Cable	□ Anchorage Area	☆ Beacon, General	■ -20' to -30'
..... Unconfirmed Pipeline/Cable	⊗ Obstruction Point	◆ Red Navigation Buoy	■ -30' to -40'
— Project Depth Contour	⚡ Wrecks-Submerged	◆ Green Navigation Buoy	■ -40' to -45'
			■ -45' to -50'
			■ -50' to -55'
			■ -55' and below

Gage Reading: 1.1 MLLW @ LIGHT 14 @ 1130
 Sea Conditions: CALM, FLUFF
 Vessel Name: BEAUVAIS & JOHN BOPP
 Survey Type: CONDITION, SB
 Sounding Frequency***: LOW

Notes:


Horizontal Coordinate System: North American Datum of 1983 (NAD83), projected to the State Plane Coordinate System (SPCS), Louisiana South Zone. Distance units in U.S. Survey Feet.
 Vertical Datum: Soundings are shown in feet and indicate depths below Mean Lower Low Water (MLLW, 12-16). Datum Relationships for gage 01625 as of March 2020: 0.0' NAVD88, 2009.55 = 0.40' MLLW = 3.90' MLG
 Distances on the Mississippi River, above and below Head of Passes are shown at 1 mile intervals.

The location of navigation aids are base on and provided by the U.S. Coast Guard.

2016 Aerial Photography data source: Precision Aerial Reconnaissance, LLC (1998 DOQQ in green)
 Reference is N.O.A. Navigation Chart No. 11361.

*** Shoalest Sounding per Quarter per Reach.

*** High frequency (200 kHz) survey data represents the first signal return at a sounding location and will include suspended solids, known as "fluff", if present. Low frequency (24 kHz) survey data normally penetrates through this "fluff" layer to depict elevations of consolidated bottom material. Low frequency accuracies may vary depending on channel conditions and fathometer settings.



US Army Corps of Engineers
District: CEMVN

MISSION STATEMENT

Access Complaintants: The United States Government furnishes these data and the recipient accepts and uses them with the express warranty of no liability for any particular purpose of the recipient. The user is responsible for the results and accuracy of the information provided. This information is provided as is under no liability whatsoever to any person by reason of any use made of this information. These data are being made available for public use. The recipient may not transfer these data to others without also transferring this Disclaimer. The information depicted on this map represents the results of a hydrographic survey conducted on or about the date of the survey. This information is considered to represent the general condition existing at that time.

Submitted:	Reviewed By:	Checked By:
JJC & JH	TSS	MSK

MISSISSIPPI RIVER - B.R. TO GULF
SOUTHWEST PASS - SHEET 9
SW_09_SWP_20210803_CS
03 August 2021

Sheet Reference Number
9 of 13

Revision Number: 4.2-20210803.20