

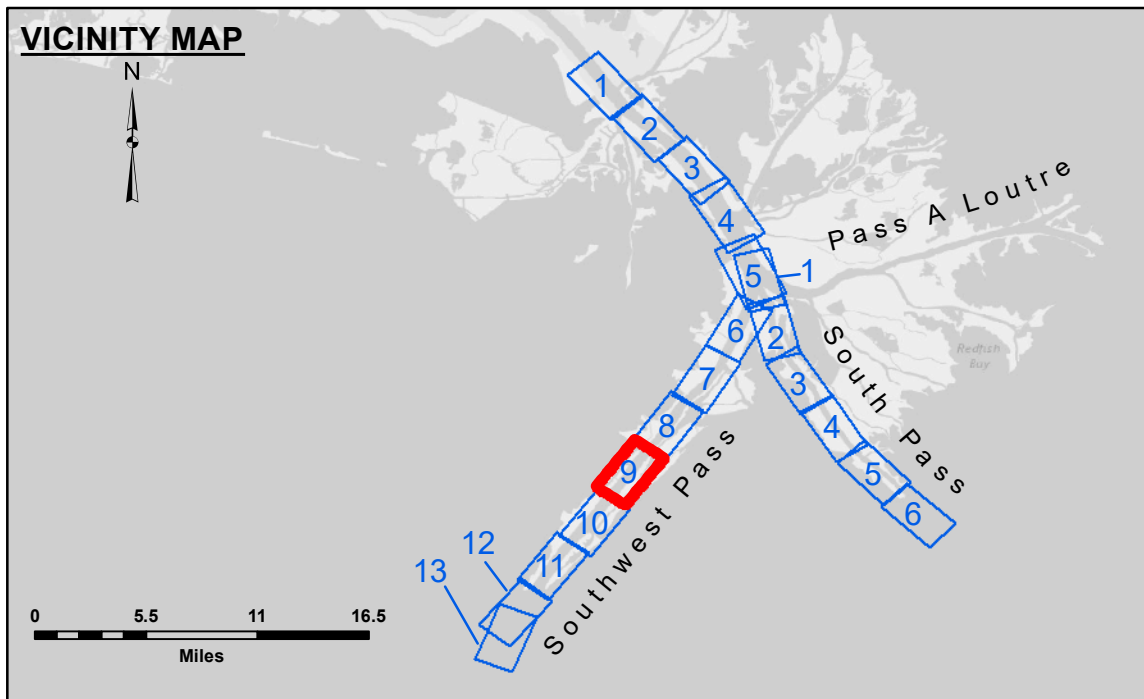
**DISCLAIMER**  
 The United States Government furnishes these data and the recipient accepts and uses them with the express understanding that the data are not to be used for any purpose other than that for which they were prepared, and that the user is responsible for the results and accuracy of any use of the data for other than the intended purpose.  
 The information depicted on this map represents the results of a hydrographic survey which was conducted under the terms of a contract with the Army Corps of Engineers. The recipient may not transfer these data to others without also transferring the contract. The recipient is not to be held responsible for any use of the data for other than the intended purpose. The recipient may not transfer these data to others without also transferring the contract. The recipient is not to be held responsible for any use of the data for other than the intended purpose.

Submitted:	JUC & MGF
Reviewed:	TSS
Approved:	MSK

U.S. ARMY CORPS OF ENGINEERS  
 NEW ORLEANS DISTRICT

**MISSISSIPPI RIVER - B. R. TO GULF  
 SOUTHWEST PASS - SHEET 9  
 SW\_09\_SWP\_20220309\_CS\_PRO  
 09 March 2022**

**Sheet Reference Number  
 9 of 13**



LEGEND	
— Federal Navigation Channel	● Cable Area
— Federal Navigation Center Line	□ Placement Area
— As-built Pipeline/Cable	□ Anchorage Area
..... Unconfirmed Pipeline/Cable	⊗ Obstruction Point
— Project Depth Contour	★ Wrecks-Submerged
□ Borrow Area	☆ Beacon, General
● Shoalest Sounding**	◆ Red Navigation Buoy
☆ Beacon, General	◆ Green Navigation Buoy

Gage Reading:	1.7 MLLW @ LIGHT 14 @ 0940
Sea Conditions:	CALM
Vessel Name:	BEAUVAIS
Survey Type:	CONDITION, SB
Sounding Frequency***:	LOW

Vertical Datum:  
 Soundings are shown in feet and indicate depths below Mean Lower Low Water (MLLW, 12-16).  
 Datum Relationships for gage 01625 as of March 2020:  
 0.0' NAVD88, 2009.55 = 0.40' MLLW = 3.90' MLG

Distances on the Mississippi River, above and below Head of Passes are shown at 1 mile intervals.

The location of navigation aids are base on and provided by the U.S. Coast Guard.

2016 Aerial Photography data source: Precision Aerial Reconnaissance, LLC (1998 DOQQ in green)

Reference is N.O.A. Navigation Chart No. 11361.

\*\* Shoalest Sounding per Quarter per Reach.

\*\*\* High frequency (200 kHz) survey data represents the first signal return at a sounding location and will include suspended solids, known as "fluff", if present. Low frequency (24 kHz) survey data normally penetrates through this "fluff" layer to depict elevations of consolidated bottom material. Low frequency accuracies may vary depending on channel conditions and fathometer settings.

