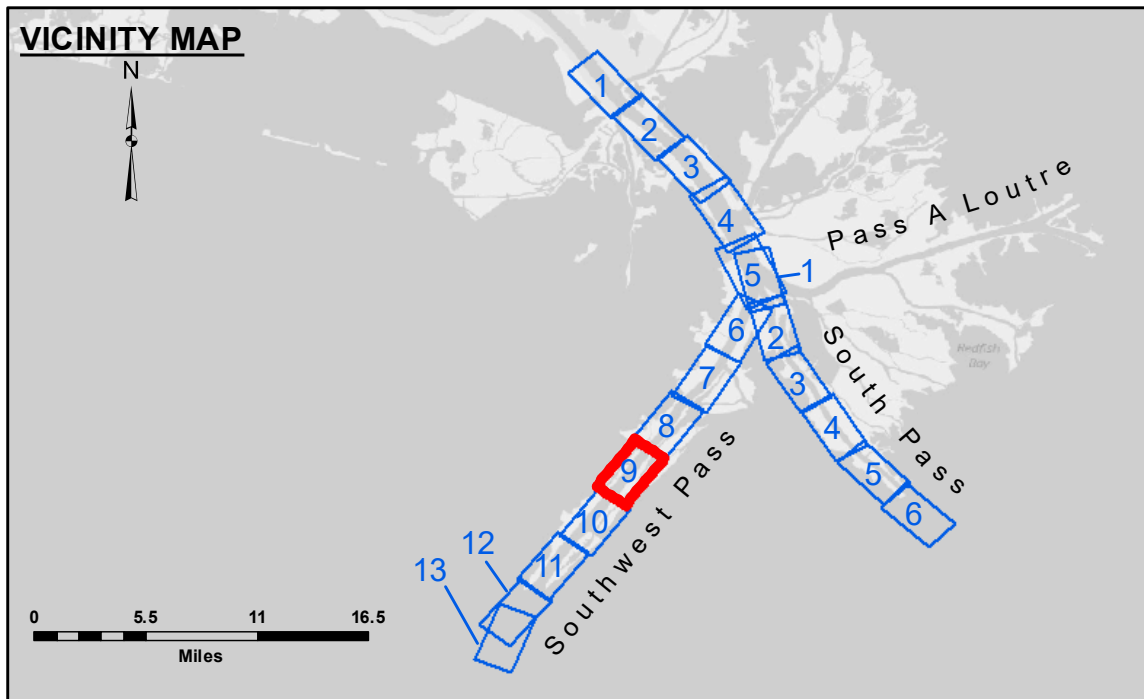
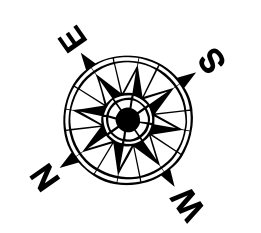


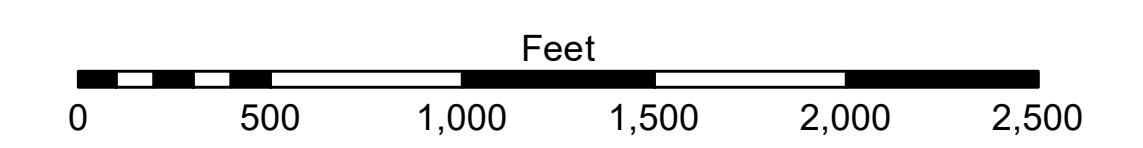
**DREDGE WHEELER
DREDGING STATION 415+00 TO STATION 585+00
FULL CHANNEL WIDTH SHEETS 8 & 9**



| LEGEND | | | |
|----------------------------------|---------------------|-------------------------|------------------|
| --- Federal Navigation Channel | ● Cable Area | □ Borrow Area | ■ -10' and above |
| — Federal Navigation Center Line | □ Placement Area | ● Shoalest Sounding** | ■ -10' to -20' |
| — As-built Pipeline/Cable | □ Anchorage Area | ★ Beacon, General | ■ -20' to -30' |
| Unconfirmed Pipeline/Cable | ⊗ Obstruction Point | ◆ Red Navigation Buoy | ■ -30' to -40' |
| — Project Depth Contour | ⚓ Wrecks-Submerged | ◆ Green Navigation Buoy | ■ -40' to -45' |
| | | | ■ -45' to -50' |
| | | | ■ -50' to -55' |
| | | | ■ -55' and below |



Gage Reading: 1.7 MLLW @ LIGHT 14 @ 1020
 Sea Conditions: CALM, FLUFF
 Vessel Name: BLANCHARD
 Survey Type: CONDITION, SB
 Sounding Frequency***: LOW



NOTES:
 Horizontal Coordinate System: North American Datum of 1983 (NAD83), projected to the State Plane Coordinate System (SPCS), Louisiana South Zone. Distance units in U.S. Survey Feet.
 Vertical Datum: Soundings are shown in feet and indicate depths below Mean Lower Low Water (MLLW, 12-16). Datum Relationships for gage 01625 as of March 2020: 0.0' NAVD88, 2009.55 = 0.40' MLLW = 3.90' MLG
 Distances on the Mississippi River, above and below Head of Passes are shown at 1 mile intervals.
 The location of navigation aids are base on and provided by the U.S. Coast Guard.
 2016 Aerial Photography data source: Precision Aerial Reconnaissance, LLC (1998 DOQQ in green)
 Reference is N.O.A. Navigation Chart No. 11361.
 ** Shoalest Sounding per Quarter per Reach.
 *** High frequency (200 kHz) survey data represents the first signal return at a sounding location and will include suspended solids, known as "fluff", if present. Low frequency (24 kHz) survey data normally penetrates through this "fluff" layer to depict elevations of consolidated bottom material. Low frequency accuracies may vary depending on channel conditions and fathometer settings.



DISCLAIMER: The United States Government furnishes these data and the recipient accepts and uses them with the express understanding that the United States Government makes no warranty, expressed or implied, concerning the accuracy, completeness, reliability, usability or suitability for any particular purpose of the information furnished. The user is responsible for the results obtained from the use of this information. The user shall indemnify and hold the United States Government harmless from any and all claims, damages, costs and expenses, including reasonable attorneys' fees, that may be incurred by the United States Government as a result of the use of this information. The information depicted on this map represents the results of a survey conducted on or about the date of the survey. The information is not intended to be used for any purpose other than that for which it was collected. The information is not intended to be used for any purpose other than that for which it was collected. The information is not intended to be used for any purpose other than that for which it was collected.

| | |
|--------------|--------------|
| Submitted: | Surveyed By: |
| Recommended: | JTB & DBD |
| Approved: | Plotted By: |
| Checked By: | TSS |
| Checked By: | MSK |

**MISSISSIPPI RIVER - B.R. TO GULF
SOUTHWEST PASS - SHEET 9
SW_09_SWP_20220428_CS
28 April 2022**

**Sheet Reference Number
9 of 13**

Revision Number:
4.2-20220428.20