

**DREDGE GLENN EDWARDS
STATION 565+00 TO STATION 710+00
FULL CHANNEL WIDTH**

3,922,000

194,000 3,922,000

191,000

3,919,000

188,000

185,000 3,916,000

200,000

3,919,000

200,000 3,916,000 197,000 3,913,000 194,000 3,910,000



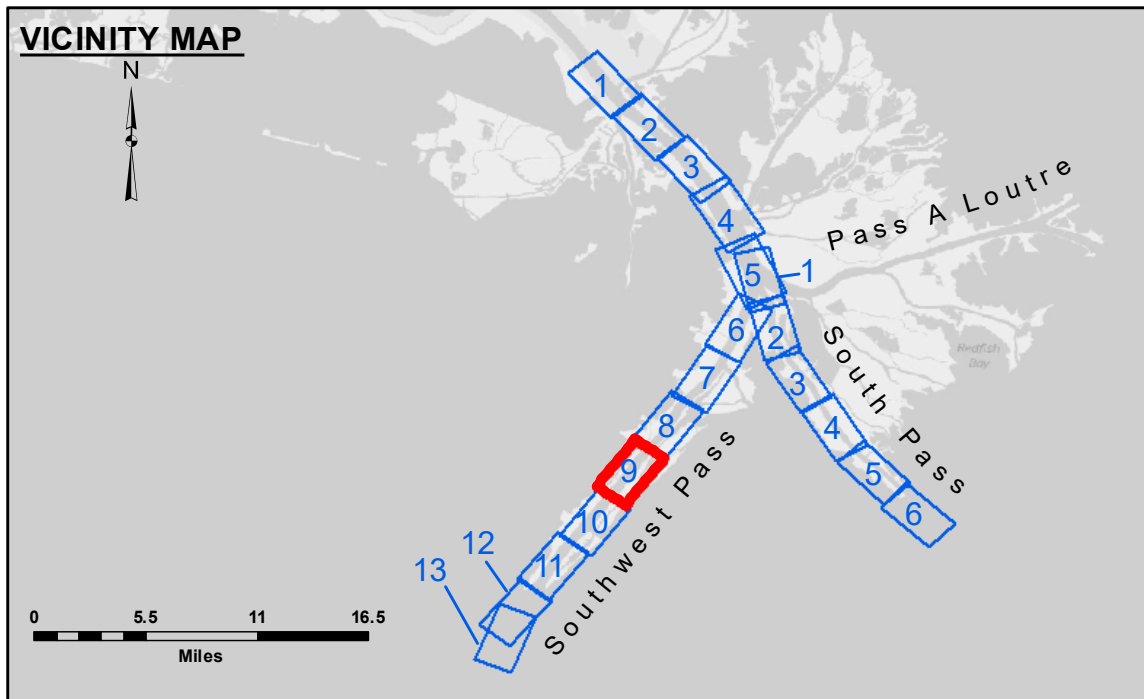
DISCLAIMER
The United States Government furnishes these data and the recipient accepts and uses them with the express understanding that the United States Government makes no warranty, expressed or implied, concerning the accuracy, completeness, reliability, usability, or suitability for any particular purpose of the information provided. The user is responsible for the results obtained from the use of this information. The user agrees to hold the United States Government harmless from and against all claims, damages, and expenses, including reasonable attorneys' fees, that may be incurred by the user in connection with the use of this information. The information depicted on this map represents the results of a survey conducted on or after the date of the survey. The user is responsible for the results of the survey. The user agrees to hold the United States Government harmless from and against all claims, damages, and expenses, including reasonable attorneys' fees, that may be incurred by the user in connection with the use of this information. The information depicted on this map represents the results of a survey conducted on or after the date of the survey. The user is responsible for the results of the survey. The user agrees to hold the United States Government harmless from and against all claims, damages, and expenses, including reasonable attorneys' fees, that may be incurred by the user in connection with the use of this information.

Submitted:	Checked:
Recommended:	Checked:
Approved:	Checked:

U.S. ARMY CORPS OF ENGINEERS
NEW ORLEANS DISTRICT

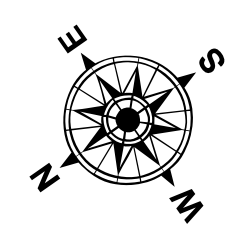
**MISSISSIPPI RIVER - B. R. TO GULF
SOUTHWEST PASS - SHEET 9
SW_09_SWP_20230406_CS
06 April 2023**

**Sheet Reference Number
9 of 13**

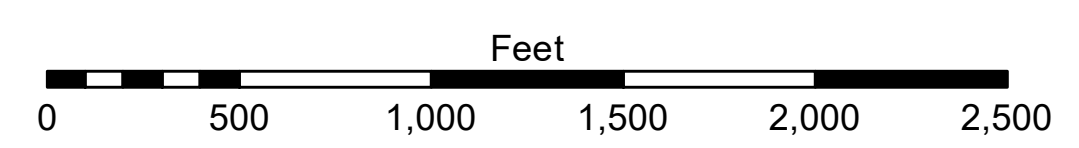


LEGEND

--- Federal Navigation Channel	● Cable Area	□ Borrow Area	■ -10' and above
— Federal Navigation Center Line	□ Placement Area	● Shoalest Sounding**	■ -10' to -20'
— As-built Pipeline/Cable	□ Anchorage Area	★ Beacon, General	■ -20' to -30'
..... Unconfirmed Pipeline/Cable	⊗ Obstruction Point	◆ Red Navigation Buoy	■ -30' to -40'
— Project Depth Contour	★ Wrecks-Submerged	◆ Green Navigation Buoy	■ -40' to -45'
			■ -45' to -50'
			■ -50' to -55'
			■ -55' and below



Gage Reading: 1.7 MLLW @ LIGHT 14 @ 1130
Sea Conditions: CALM, FLUFF
Vessel Name: TOBIN & BLANCHARD
Survey Type: CONDITION, SB
Sounding Frequency***: LOW



NOTES:
Horizontal Coordinate System: North American Datum of 1983 (NAD83), projected to the State Plane Coordinate System (SPCS), Louisiana South Zone. Distance units in U.S. Survey Feet.
Vertical Datum: Soundings are shown in feet and indicate depths below Mean Lower Low Water (MLLW, 12-16). Datum Relationships for gage 01625 as of March 2020: 0.0' NAVD88, 2009.55 = 0.40' MLLW = 3.90' MLG
Distances on the Mississippi River, above and below Head of Passes are shown at 1 mile intervals.
The location of navigation aids are based on and provided by the U.S. Coast Guard.
2022 Aerial Photography data source: Optimal GEO (1998 DOQQ in green)
Reference is N.O.A. Navigation Chart No. 11361.
** Shoalest Sounding per Quarter per Reach.
*** High frequency (200 kHz) survey data represents the first signal return at a sounding location and will include suspended solids, known as "fluff", if present. Low frequency (24 kHz) survey data normally penetrates through this "fluff" layer to depict elevations of consolidated bottom material. Low frequency accuracies may vary depending on channel conditions and fathometer settings.