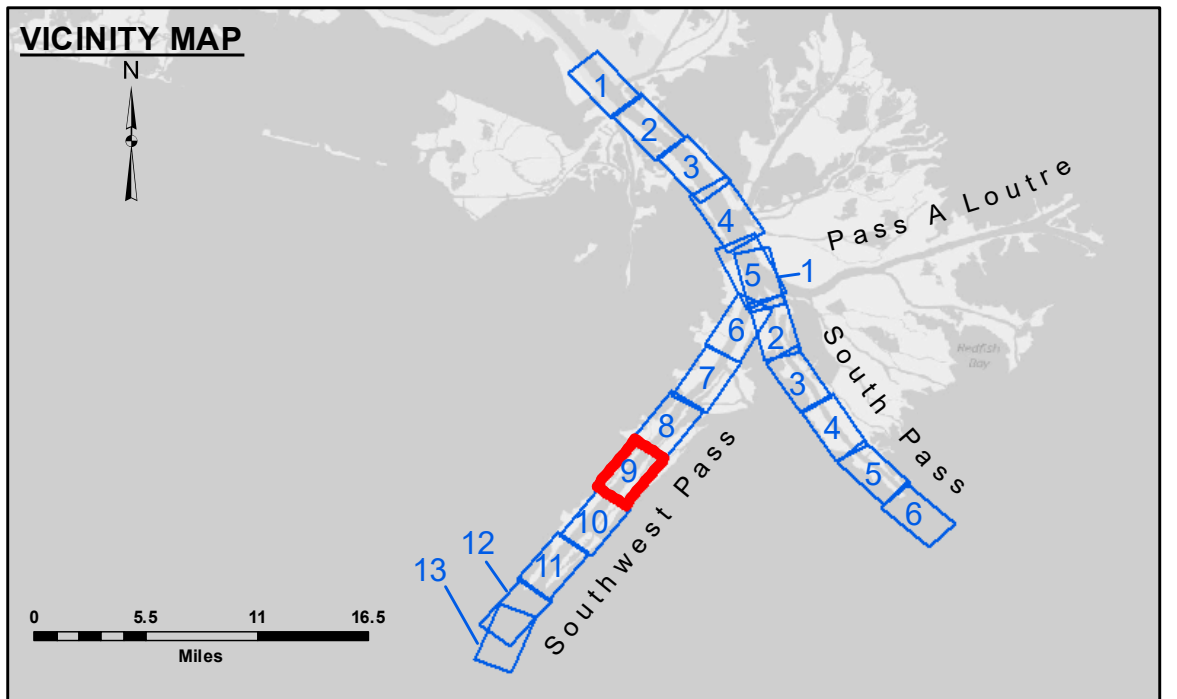


DREDGE WHEELER
DREDGING STATION 510+00 TO STATION 595+00
FULL CHANNEL WIDTH SHEETS 8 & 9



DISCLAIMER
The United States Government furnishes these data and the recipient accepts and uses them with the express understanding that the data are not to be used for any purpose other than that for which they were originally prepared, and that the user is responsible for the results and accuracy of any data derived therefrom. The user is responsible for the results and accuracy of any data derived therefrom. The user is responsible for the results and accuracy of any data derived therefrom. The user is responsible for the results and accuracy of any data derived therefrom.

Submitted:	Checked:
Recommended:	Checked:
Approved:	Checked:



LEGEND	
--- Federal Navigation Channel	● Cable Area
— Federal Navigation Center Line	□ Placement Area
— As-built Pipeline/Cable	□ Anchorage Area
..... Unconfirmed Pipeline/Cable	⊗ Obstruction Point
— Project Depth Contour	★ Wrecks-Submerged
□ Borrow Area	★ Beacon, General
● Shoalest Sounding**	◆ Red Navigation Buoy
◆ Green Navigation Buoy	

Gage Reading: 2.4 MLLW @ LIGHT 14 @ 1115
 Sea Conditions: CALM, FLUFF
 Vessel Name: OB-173
 Survey Type: CONDITION, SB
 Sounding Frequency***: LOW

Vertical Datum:
 Soundings are shown in feet and indicate depths below Mean Lower Low Water (MLLW, 12-16).
 Datum Relationships for gage 01625 as of March 2020:
 0.0' NAVD88, 2009.55 = 0.40' MLLW = 3.90' MLG

Distances on the Mississippi River, above and below Head of Passes are shown at 1 mile intervals.

The location of navigation aids are base on and provided by the U.S. Coast Guard.

2022 Aerial Photography data source: Optimal GEO (1998 DOQQ in green)

Reference is N.O.A. Navigation Chart No. 11361.

** Shoalest Sounding per Quarter per Reach.

*** High frequency (200 kHz) survey data represents the first signal return at a sounding location and will include suspended solids, known as "fluff", if present. Low frequency (24 kHz) survey data normally penetrates through this "fluff" layer to depict elevations of consolidated bottom material. Low frequency accuracies may vary depending on channel conditions and fathometer settings.

**MISSISSIPPI RIVER - B.R. TO GULF
SOUTHWEST PASS - SHEET 9
SW_09_SWP_20230525_CS
25 May 2023**

**Sheet Reference Number
9 of 13**

Revision Number:
4.2-20230429