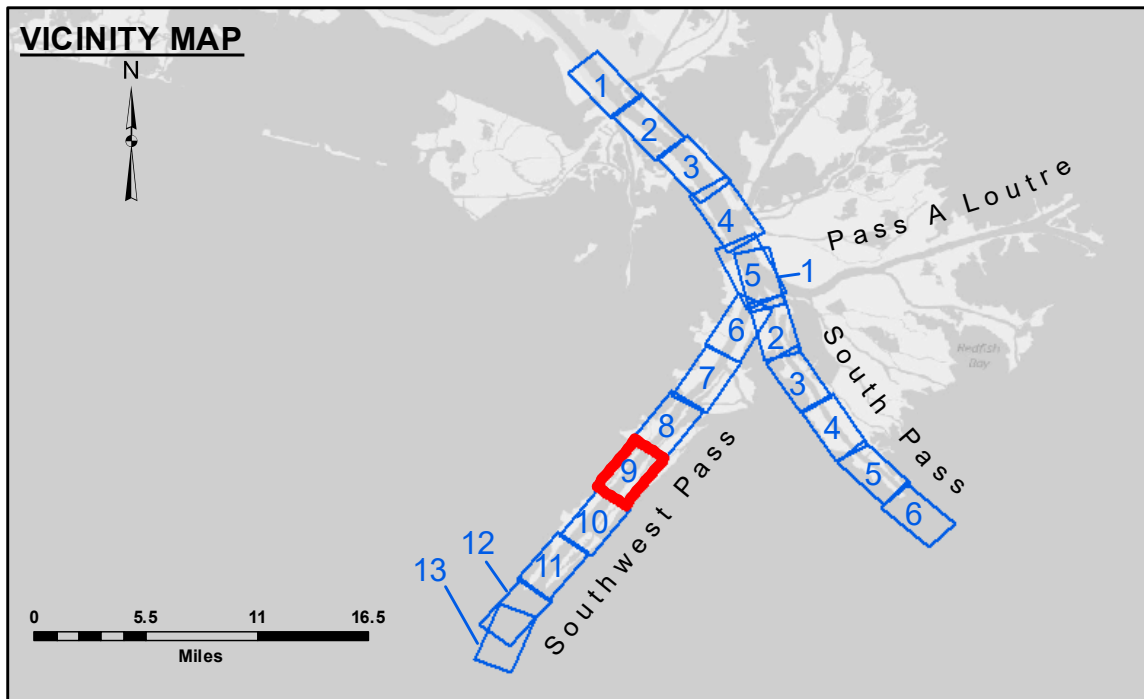


DISCLAIMER
 The United States Government furnishes these data and the recipient accepts and uses them with the express understanding that the data are not warranted for any purpose other than that for which they were collected. The user is responsible for the results of any use of the data. The Corps of Engineers does not accept any liability for any use of the data for purposes other than those for which they were collected. The Corps of Engineers does not accept any liability for any use of the data for purposes other than those for which they were collected. The Corps of Engineers does not accept any liability for any use of the data for purposes other than those for which they were collected.

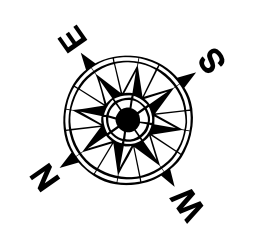
Submitted:	Checked:
Recommended:	Checked:
Approved:	Checked:

**MISSISSIPPI RIVER - B.R. TO GULF
 SOUTHWEST PASS - SHEET 9
 SW_09_SWP_20240404_CS
 04 April 2024**

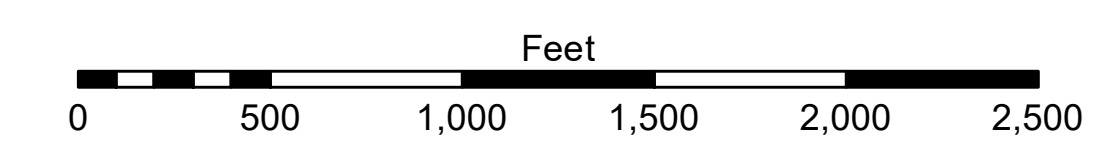


LEGEND

--- Federal Navigation Channel	● Cable Area	□ Borrow Area	■ -10' and above
— Federal Navigation Center Line	□ Placement Area	● Shoalest Sounding**	■ -10' to -20'
— As-built Pipeline/Cable	□ Anchorage Area	★ Beacon, General	■ -20' to -30'
..... Unconfirmed Pipeline/Cable	⊗ Obstruction Point	◆ Red Navigation Buoy	■ -30' to -40'
— Project Depth Contour	⚓ Wrecks-Submerged	◆ Green Navigation Buoy	■ -40' to -45'
			■ -45' to -50'
			■ -50' to -55'
			■ -55' and below



Gage Reading: 0.3 MLLW @ LIGHT 14 (01625) @ 0945
 Sea Conditions: CALM, FLUFF
 Vessel Name: TOBIN & BLANCHARD
 Survey Type: CONDITION, SB
 Sounding Frequency***: LOW



NOTES:
 Horizontal Coordinate System: North American Datum of 1983 (NAD83), projected to the State Plane Coordinate System (SPCS), Louisiana South Zone. Distance units in U.S. Survey Feet.
 Vertical Datum: 0.0' NAVD88, 2009.55 = 0.40' MLLW = 3.90' MLG
 Soundings are shown in feet and indicate depths below Mean Lower Low Water (MLLW, 12-16). Datum Relationships for gage 01625 as of March 2020: 0.0' NAVD88, 2009.55 = 0.40' MLLW = 3.90' MLG
 Distances on the Mississippi River, above and below Head of Passes are shown at 1 mile intervals.
 The location of navigation aids are based on and provided by the U.S. Coast Guard.
 2022 Aerial Photography data source: Optimal GEO (1998 DOQQ in green)
 Reference is N.O.A. Navigation Chart No. 11361.
 ** Shoalest Sounding per Quarter per Reach.
 *** High frequency (200 kHz) survey data represents the first signal return at a sounding location and will include suspended solids, known as "fluff", if present. Low frequency (24 kHz) survey data normally penetrates through this "fluff" layer to depict elevations of consolidated bottom material. Low frequency accuracies may vary depending on channel conditions and fathometer settings.

**Sheet Reference Number
 9 of 13**