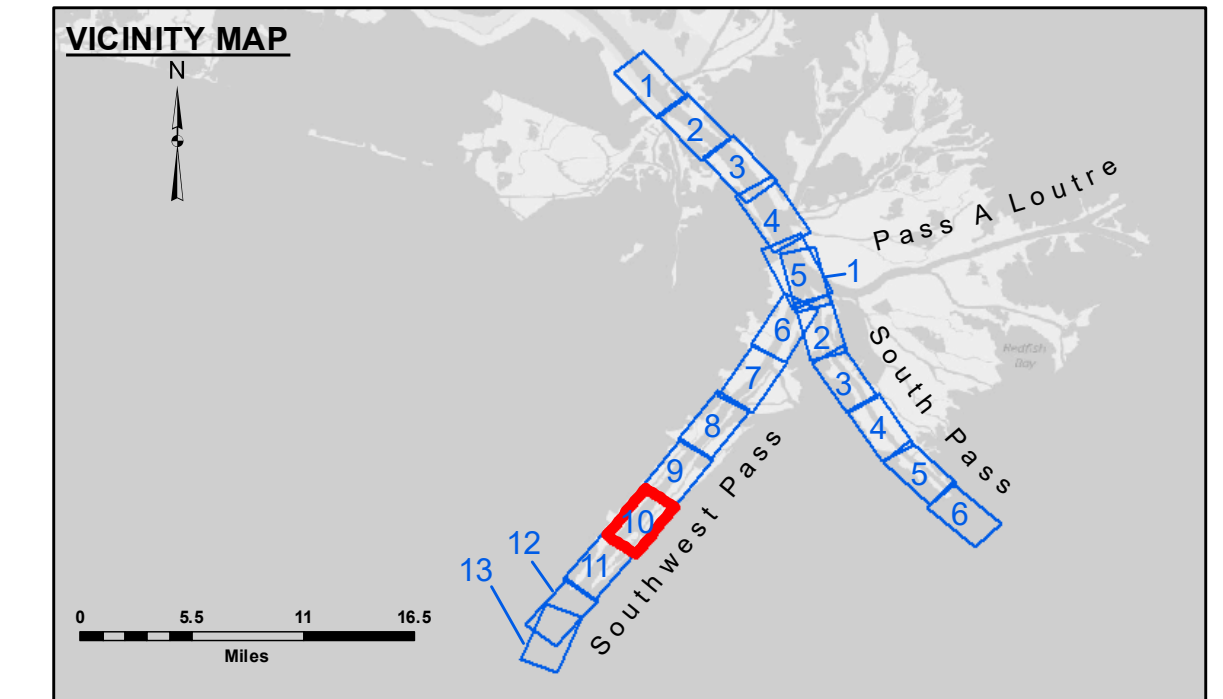
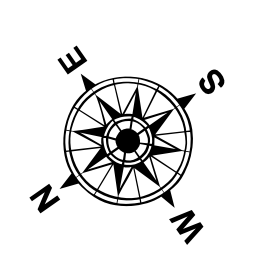


DISCLAIMER
 The United States Government furnishes this data and the recipient accepts and uses them with the express understanding that the data is not warranted for accuracy, reliability, usability, or availability for any particular purpose of the recipient. The user is responsible for the results and accuracy of any information derived from this data. The user agrees to hold the United States Government harmless from any liability whatsoever by reason of any use of this data, including but not limited to the use of this data for purposes not intended by the United States Government. The recipient may not transfer this data to others without also transferring this disclaimer. The information depicted on the map represents the results of a survey and is not to be used as a substitute for a field inspection. The recipient understands and agrees that the general condition existing at the time of the survey is not represented by this map.

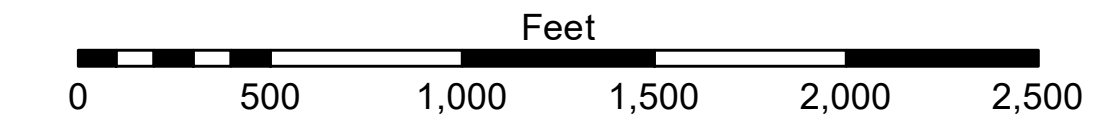
Submitted:	Chart Survey Section
Recommended:	Chart Survey Section
Approved:	Chart Waterways Maintenance Section
Surveyed By:	JTB & TDG
Plotted By:	TSS
Checked By:	MSK



LEGEND			
--- Federal Navigation Channel	● Cable Area	■ Borrow Area	■ -10' and above
— Federal Navigation Center Line	■ Placement Area	● Shoalest Sounding**	■ -10' to -20'
— As-built Pipeline/Cable	□ Anchorage Area	★ Beacon, General	■ -20' to -30'
..... Unconfirmed Pipeline/Cable	⊗ Obstruction Point	◆ Red Navigation Buoy	■ -30' to -40'
— Project Depth Contour	✎ Wrecks-Submerged	◆ Green Navigation Buoy	■ -40' to -45'
			■ -45' to -48.5'
			■ -48.5' to -55'
			■ -55' and below



Gage Reading: 0.9 MLLW @ LIGHT-14 @ 0930
 Sea Conditions: CHOPPY, HEAVY FLUFF
 Vessel Name: JOHN BOPP
 Survey Type: CONDITION, SB
 Sounding Frequency***: LOW



NOTES:
 Horizontal Coordinate System: North American Datum of 1983 (NAD83), projected to the State Plane Coordinate System (SPCS), Louisiana South Zone. Distance units in U.S. Survey Feet.
 Vertical Datum: Soundings are shown in feet and indicate depths below Mean Lower Low Water (MLLW, 07-11). Datum Relationships for gage 01625 as of July 2015: 0.0' NAVD83 = 0.39' MLLW = 3.89' MLG
 Distances on the Mississippi River, above and below Head of Passes are shown at 1 mile intervals.
 The location of navigation aids are base on and provided by the U.S. Coast Guard.
 2016 Aerial Photography data source: Precision Aerial Reconnaissance, LLC (1998 DOQQ in green)
 Reference is N.O.A. Navigation Chart No. 11361.
 ** Shoalest Sounding per Quarter per Reach.
 *** High frequency (200 kHz) survey data represents the first signal return at a sounding location and will include suspended solids, known as "fluff", if present. Low frequency (24 kHz) survey data normally penetrates through this "fluff" layer to depict elevations of consolidated bottom material. Low frequency accuracies may vary depending on channel conditions and fathometer settings.

**MISSISSIPPI RIVER - B.R. TO GULF
 SOUTHWEST PASS - SHEET 10
 SW_10_SWP_20181129_CS
 29 November 2018**

**Sheet Reference Number
 10 of 13**

Revision Number:
 3.13-20160811